

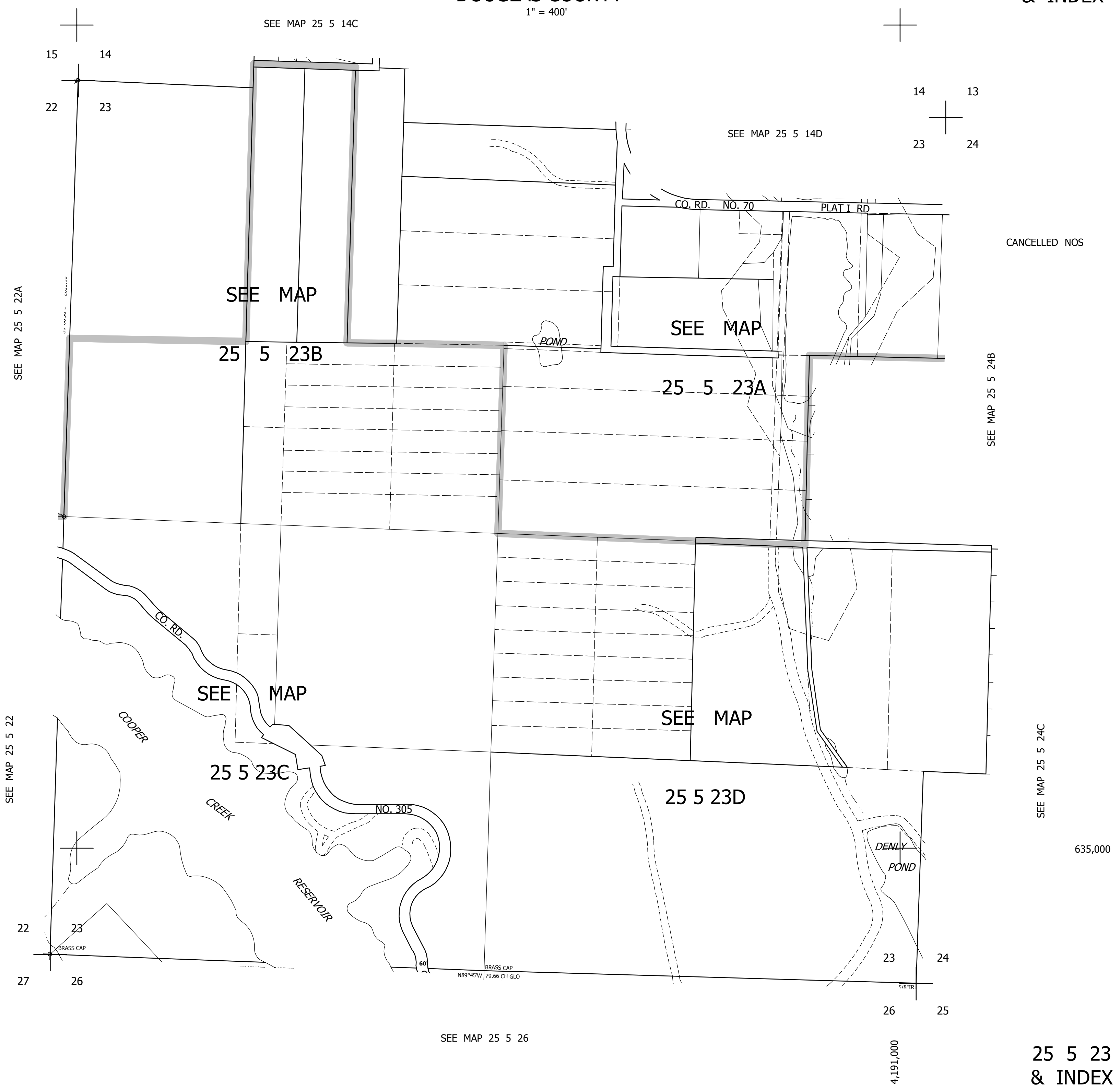
THIS MAP WAS PREPARED FOR ASSESSMENT PURPOSE ONLY.

SEC.23 T.25S. R.5W. W.M.
DOUGLAS COUNTY

REVISED ON

25 5 23
& INDEX

1" = 400'



SEE MAP 25 5 26

25 5 23
& INDEX

4,191,000