

THIS MAP WAS PREPARED FOR ASSESSMENT PURPOSE ONLY.

SW1/4 NW1/4 SEC.22 T.25S. R.5W. W.M. DOUGLAS COUNTY

REVISED ON
5-20-14

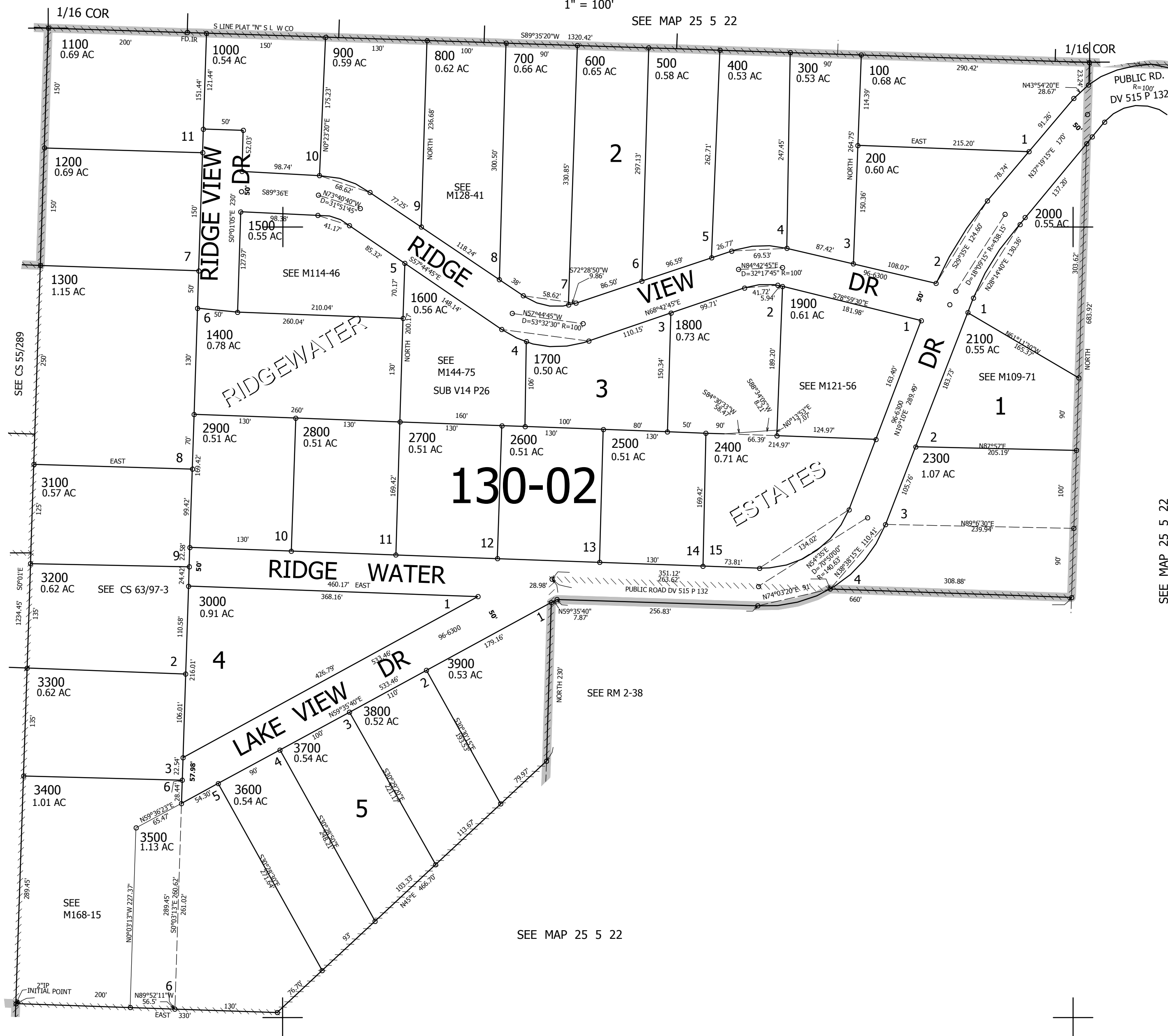
25 5 22BC SUTHERLIN

1" = 100'

SEE MAP 25 5 22

SEE MAP 25 5 21

SEE MAP 25 5 22



CANCELLED NOS
1801 2200 3401

637,500

1/4 COR

4,181,000

1/16 COR

25 5 22BC SUTHERLIN