

THIS MAP WAS PREPARED FOR ASSESSMENT PURPOSE ONLY.

NE1/4 NW1/4 SEC.21 T.25S. R.5W. W.M.
DOUGLAS COUNTY

1" = 100'

REVISED ON
6-8-22

25 5 21BA
SUTHERLIN

CANCELLED NOS
1000M1 1200M1 1300M1
1001 1101 1300
901 1000 8201
3801 1201 3700
3501 1102 4100

SEE MAP 25 5 16CC

SEE MAP 25 5 16D

SEE MAP 25 5 16D

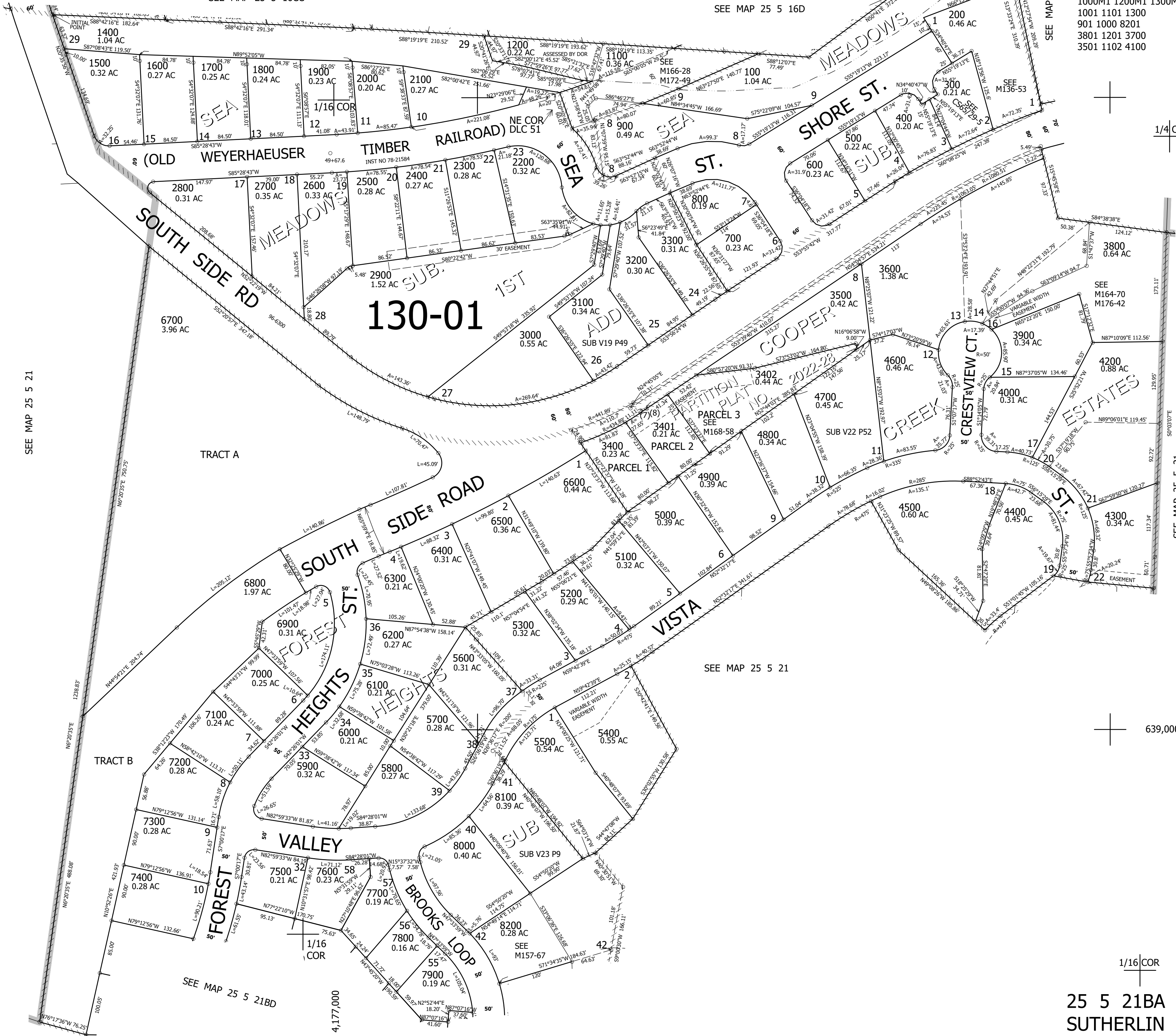
SEE MAP 25 5 21

SEE MAP 25 5 21

639,000

1/16 COR

25 5 21BA
SUTHERLIN



130-01

2022-28

TRACT B

TRACT A

SEE MAP 25 5 21BD

4,177,000