

THIS MAP WAS PREPARED FOR ASSESSMENT PURPOSE ONLY.

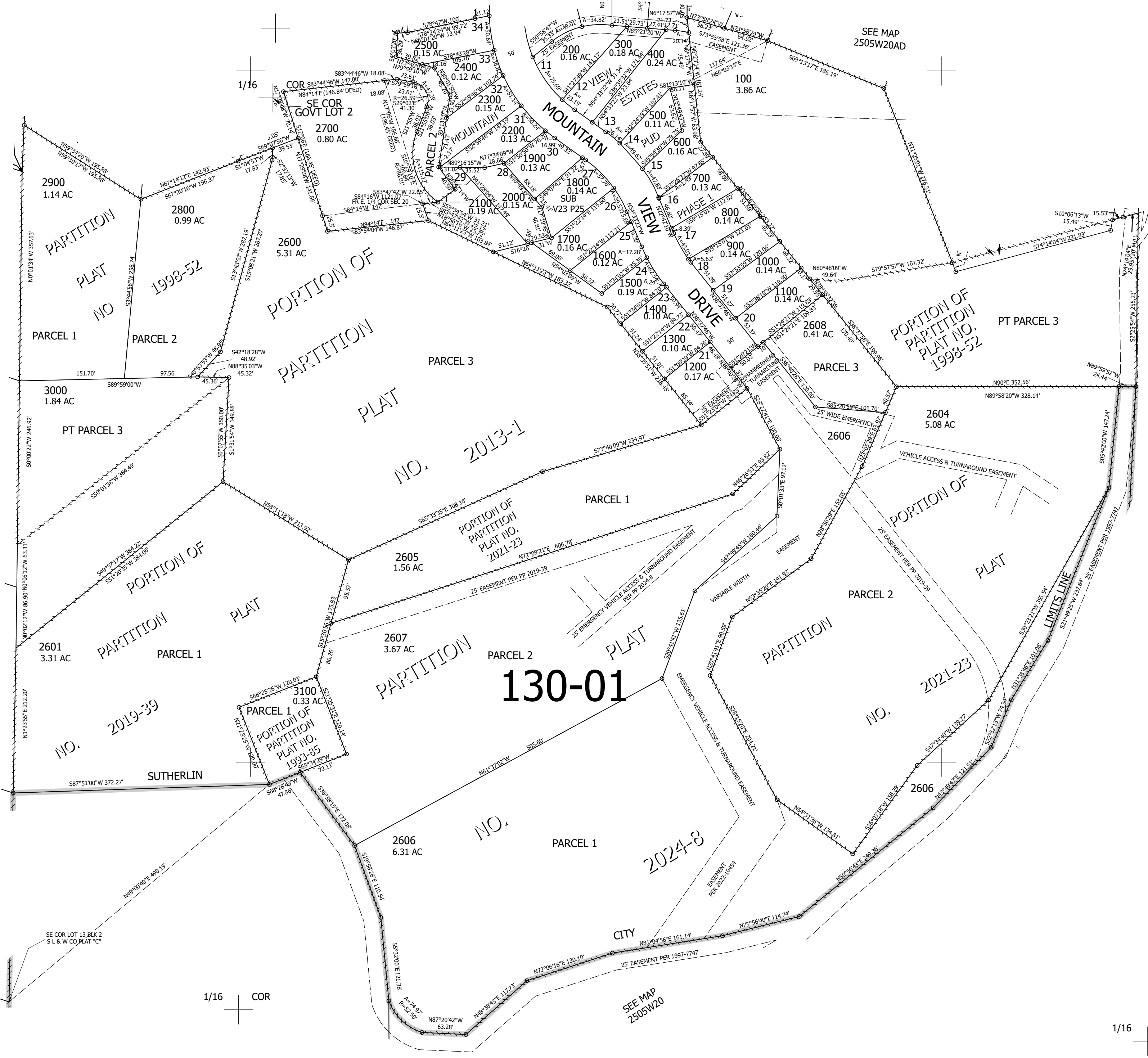
Upper Left:
123°18'48"W 43°22'55"N
4173492E 637729N ft

NE1/4 SE1/4 SEC.20 T.25S. R.05W. W.M.
DOUGLAS COUNTY
1" = 100'

Date Exported 2024-03-07

250520DA
& INDEX
Sutherland

CANCELLED NOS:
2602 2603



SEE MAP 2505W20C

SEE MAP 2505W20D

SEE MAP 2505W20

SEE COR LOT 13, BK 2 S L & W CO PLAT "C"

1/16 COR

1/16 COR

250520DA
& INDEX
Sutherland

Lower Right:
123°18'21"W 43°22'39"N
4175455E 635950N ft