

THIS MAP WAS PREPARED FOR ASSESSMENT PURPOSE ONLY.

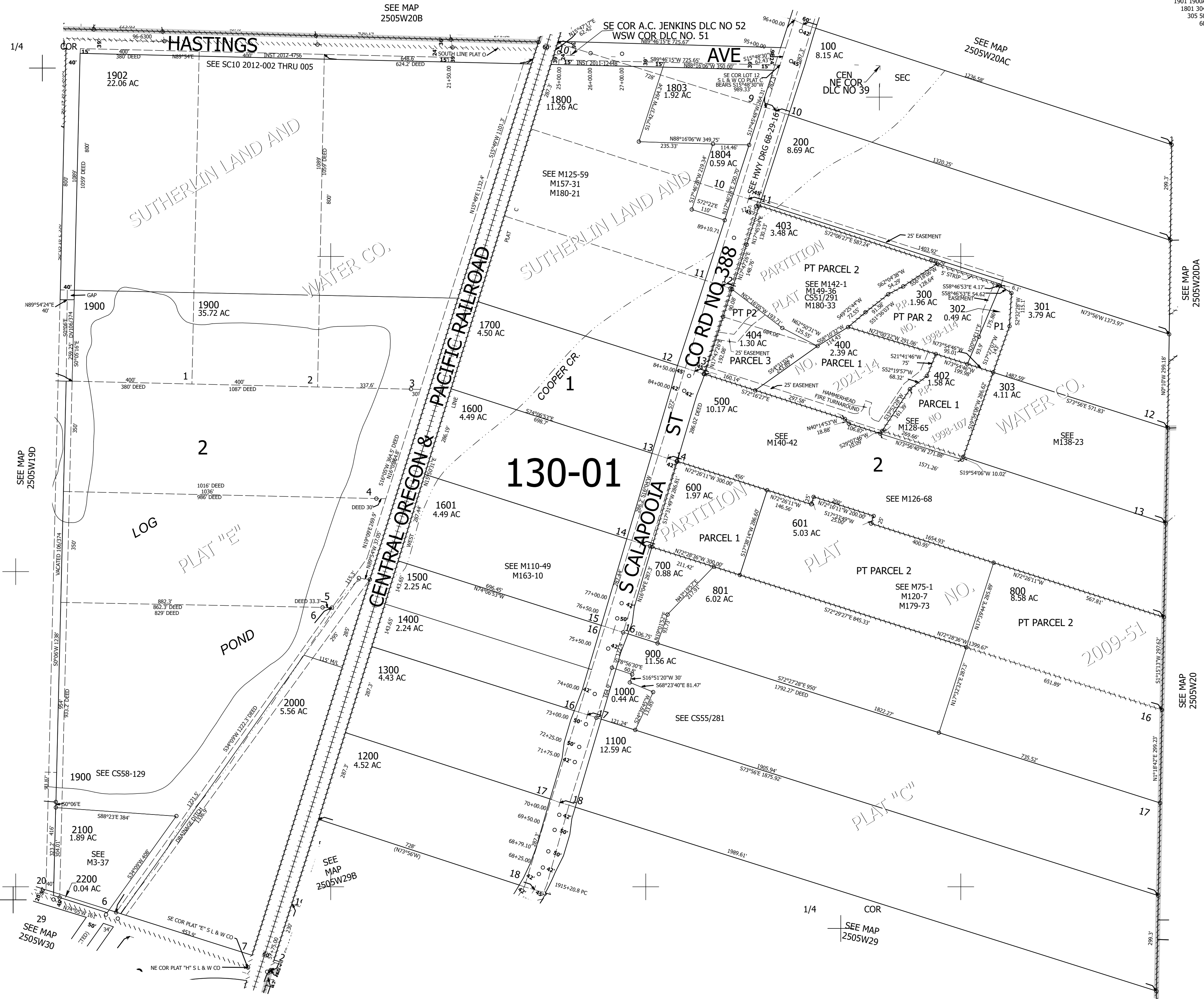
Upper Left:
123°19'37"W 43°22'56"N
4169901E 637949N ft

SW1/4 SEC.20 T.25S. R.05W. W.M.
DOUGLAS COUNTY
1" = 200'

Date Exported 2023-08-08

250520C
& INDEX
Sutherland

CANCELLED NOS:
1901 1900A1 401
1801 304 1802
305 501 502
602 405



SEE MAP
2505W20B

SEE MAP
2505W20AC

SEE MAP
2505W19D

SEE MAP
2505W20DA

SEE MAP
2505W20

SEE MAP
2505W29

SEE MAP
2505W30

SEE MAP
2505W29B

Lower Right:
123°18'42"W 43°22'23"N
4173825E 634471N ft

250520C
& INDEX
Sutherland