

THIS MAP WAS PREPARED FOR ASSESSMENT PURPOSE ONLY.

NE1/4 NW1/4 SEC.20 T.25S. R.5W. W.M. DOUGLAS COUNTY

REVISED ON 2-18-21

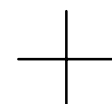
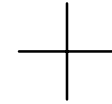
25 5 20BA SUTHERLIN

1" = 100'

SEE MAP 25 5 17DC

1/16 COR

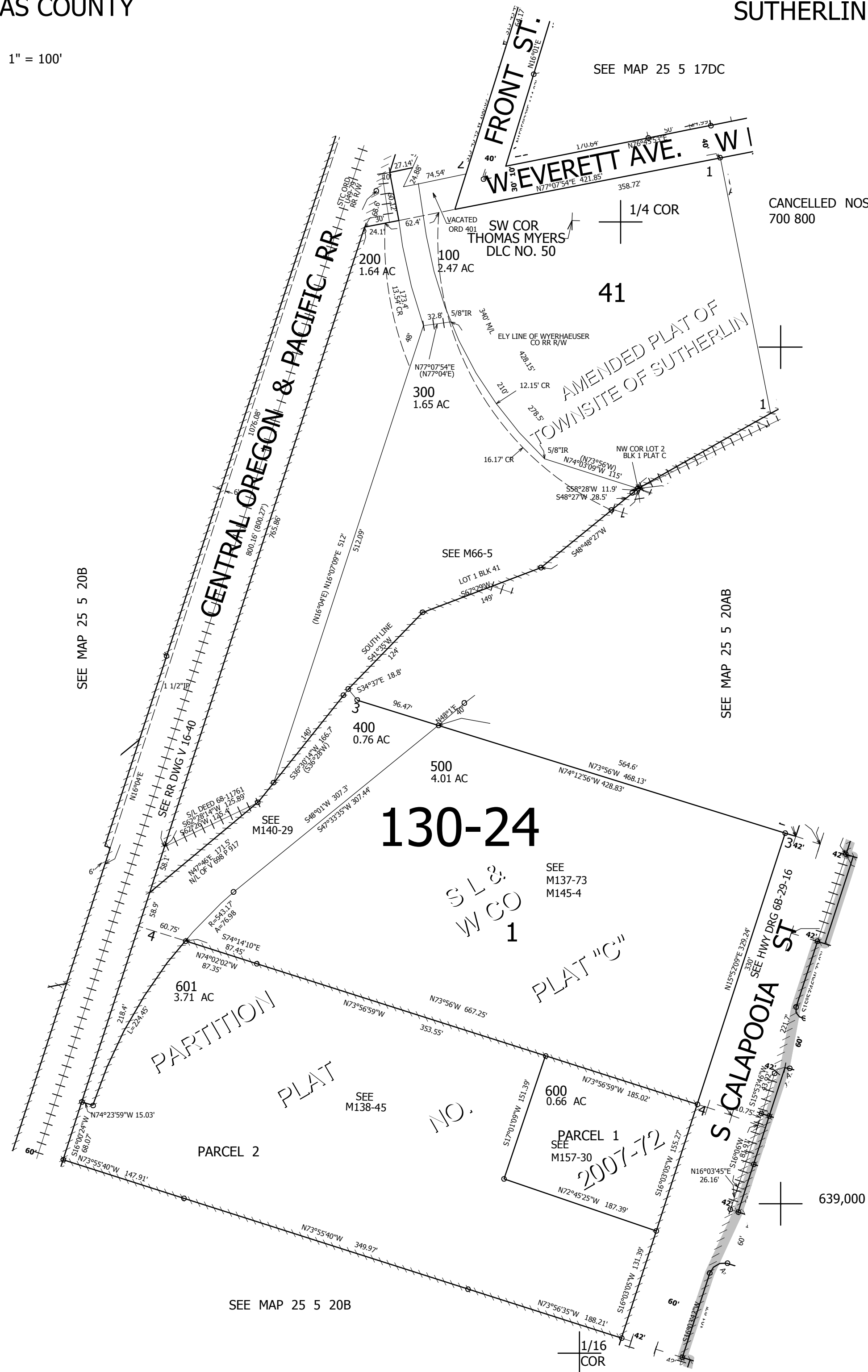
CANCELLED NOS 700 800



1/16 COR

4,172,000

639,000



SEE MAP 25 5 20B

SEE MAP 25 5 20AB

SEE MAP 25 5 20B

25 5 20BA SUTHERLIN