

THIS MAP WAS PREPARED FOR ASSESSMENT PURPOSE ONLY.

Upper Left:
123°20'19"W 43°22'57"N
4166787E 638164N ft

SE1/4 SEC.19 T.25S. R.05W. W.M.
DOUGLAS COUNTY

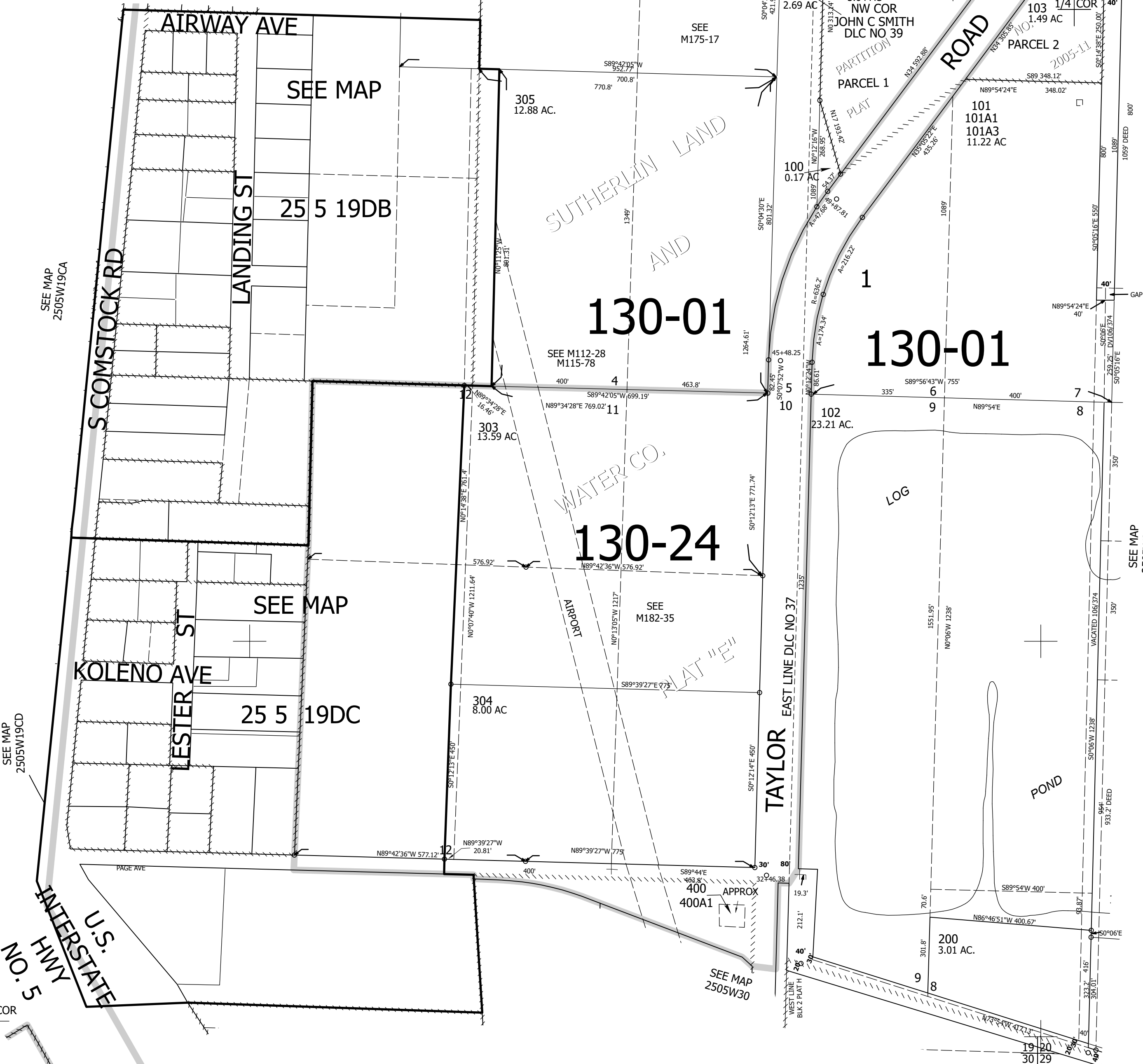
1" = 200'

Date Exported 2023-06-12

250519D
& INDEX
Sutherland

CANCELLED NOS:
301.306 101A2
308

CEN SEC



SEE MAP
2505W20C

SEE MAP
2505W19CD

SEE MAP
2505W19CA

SEE MAP
2505W19AC

SEE MAP
2505W19AD

SEE
M175-17

SEE M112-28
M115-78

SEE
M182-35

SEE MAP
2505W30

250519D
& INDEX
Sutherland

Lower Right:
123°19'25"W 43°22'24"N
4170712E 634686N ft