

THIS MAP WAS PREPARED FOR ASSESSMENT PURPOSE ONLY.

SE1/4 SW1/4 SEC.19 T.25S. R.5W. W.M.
DOUGLAS COUNTY
1" = 100'

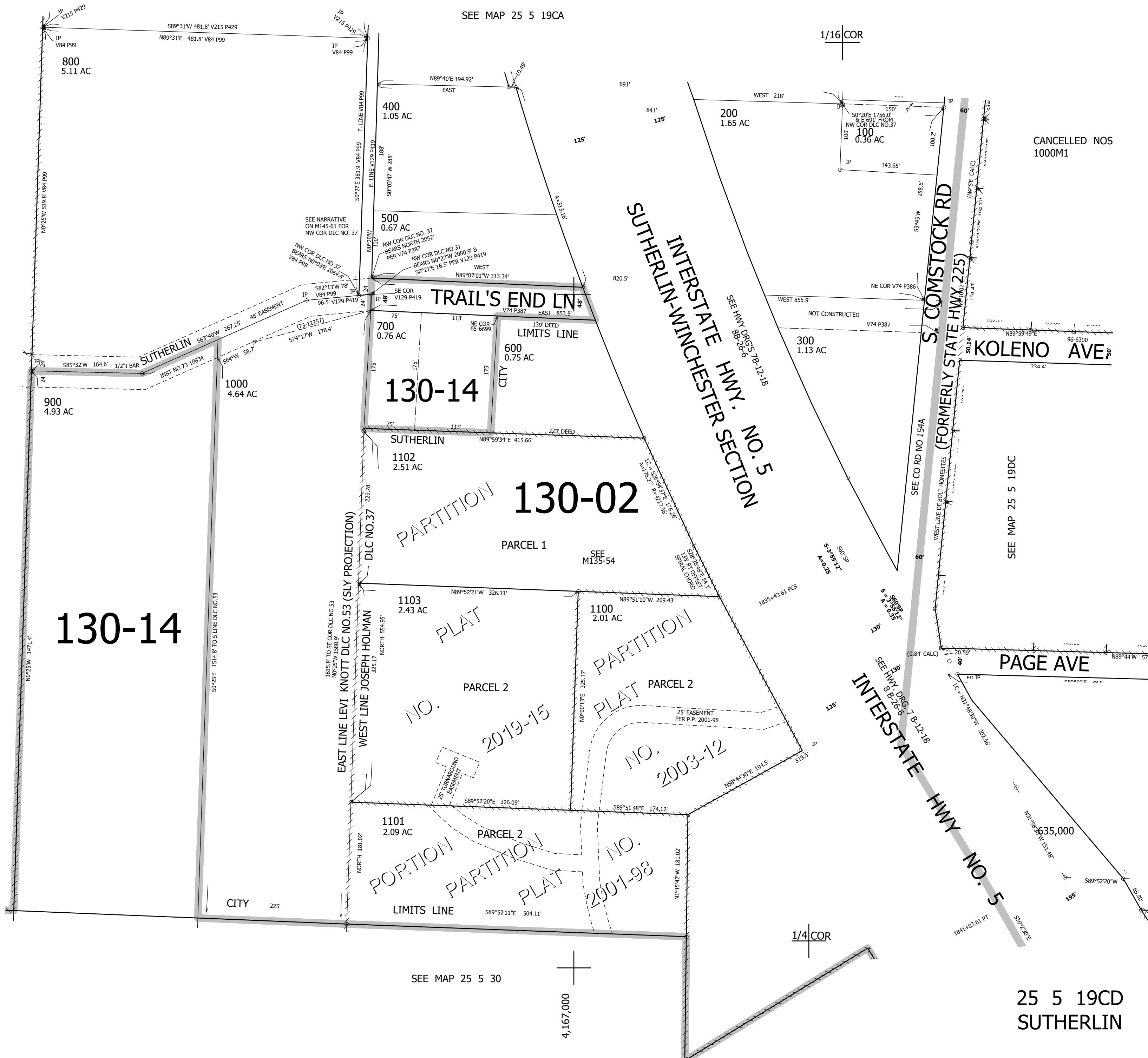
REVISED ON
6-29-22

25 5 19CD
SUTHERLIN

1/16 COR

SEE MAP 25 5 19CA

1/16 COR



CANCELLED NOS
1000M1

SEE MAP 25 5 19C

SEE MAP 25 5 19DC

SEE M135-54

SEE HWY. DRG. 7 B-12-18
8 B-25-6

SEE MAP 25 5 30

4,167,000

25 5 19CD
SUTHERLIN