

THIS MAP WAS PREPARED FOR ASSESSMENT PURPOSE ONLY.

Upper Left:  
123°20'53"W 43°22'56"N  
4164310E 638049N ft

NW1/4 SW1/4 SEC.19 T.25S. R.05W. W.M.  
DOUGLAS COUNTY  
1" = 100'

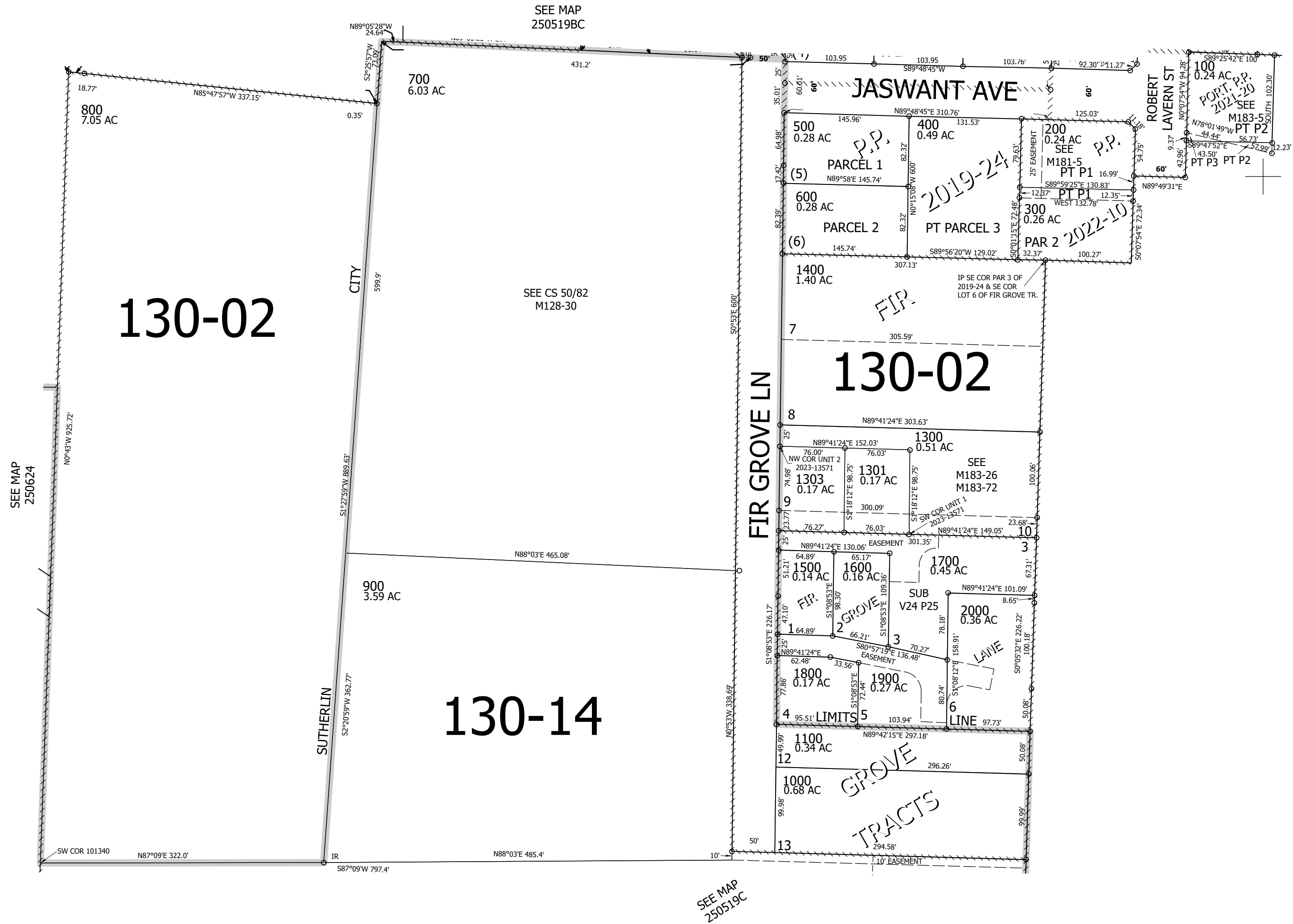
Date Exported 2024-11-14

250519CB  
Sutherland

CANCELLED NOS:  
1302 1304 1200

1/4 COR

1/16 COR



1/16 COR

1/16 COR

250519CB  
Sutherland

Lower Right:  
123°20'25"W 43°22'39"N  
4166285E 636311N ft