

THIS MAP WAS PREPARED FOR ASSESSMENT PURPOSE ONLY.

Upper Left:
123°20'30"W 43°22'54"N
4165993E 637797N ft

NE1/4 SW1/4 SEC.19 T.25S. R.05W. W.M.
DOUGLAS COUNTY
1" = 100'

Date Expired: 4/13/2023 2:40 PM

2505W19CA
& Sutherland

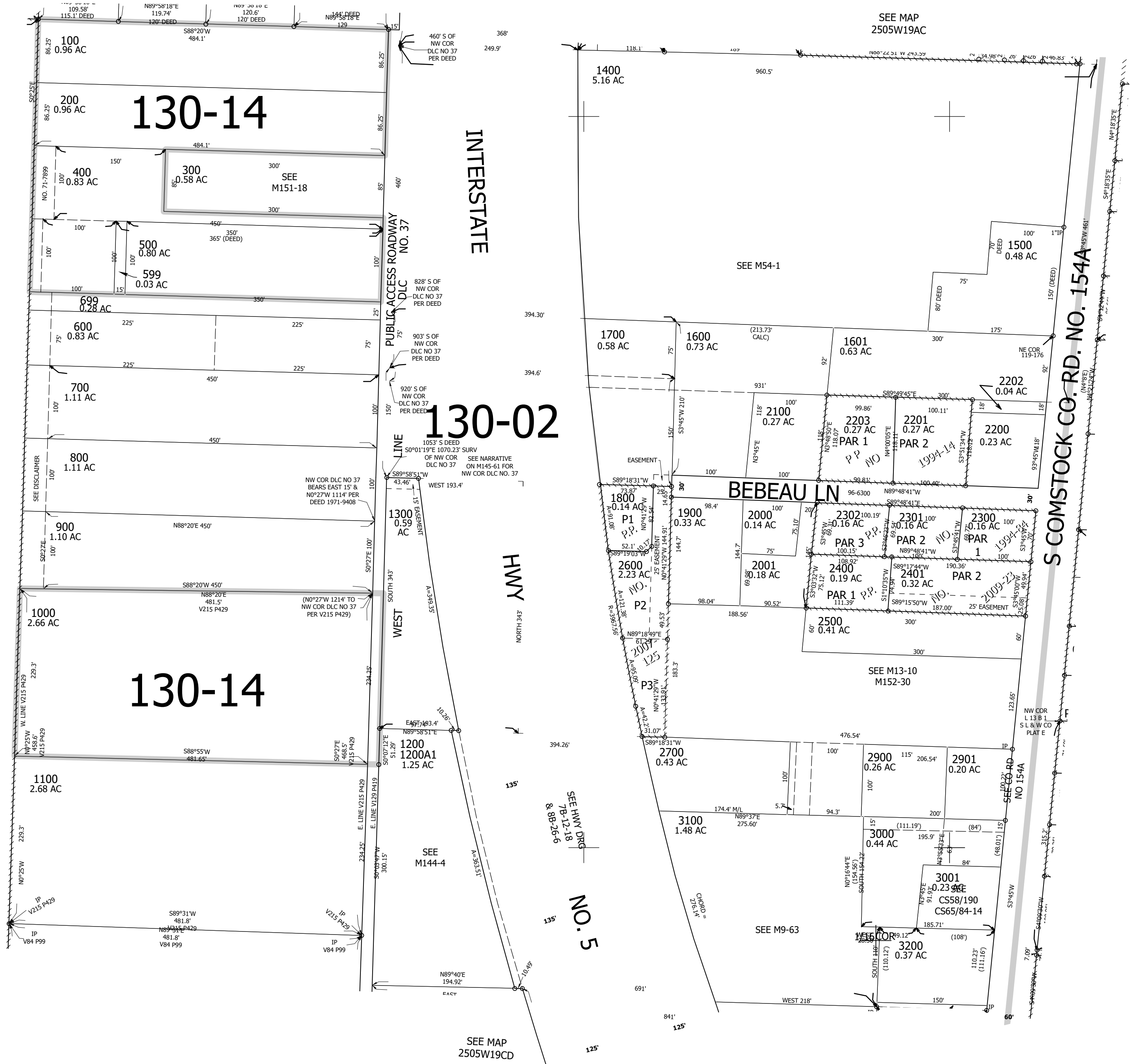
CANCELLED NOS:
3201 1801 1802
2800

1/16 COR

SEE MAP
2505W19BD

CEN SEC

SEE MAP
2505W19AC



SEE MAP
2505W19C

SEE MAP
2505W19DB

1/16 COR

SEE MAP
2505W19CD

Lower Right:
123°20'30"W 43°22'37"N
4167955E 636058N ft

2505W19CA
& Sutherland