

THIS MAP WAS PREPARED FOR ASSESSMENT PURPOSE ONLY.

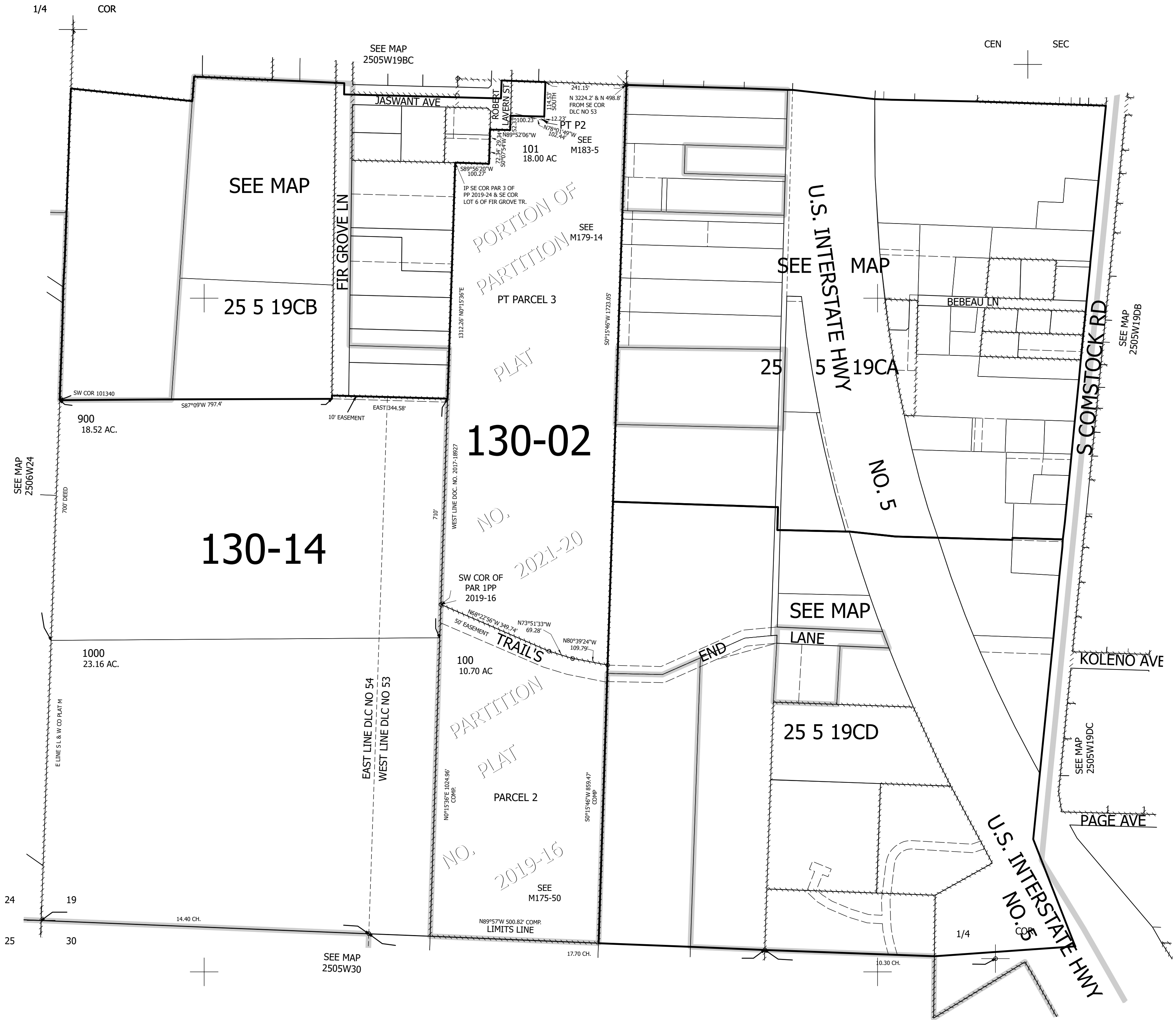
Upper Left:
123°20'54"W 43°22'56"N
4164215E 638053N ft

SW1/4 SEC.19 T.25S. R.05W. W.M.
DOUGLAS COUNTY
1" = 200'

Date Exported 2023-12-20

250519C
& INDEX
Sutherland

CANCELLED NOS:
204 102 106
107 108 103
104 105 200
201 202 203
300 400 401
500 600 700
800



Lower Right:
123°19'59"W 43°22'23"N
4168140E 634576N ft

250519C
& INDEX
Sutherland