

THIS MAP WAS PREPARED FOR ASSESSMENT PURPOSE ONLY.

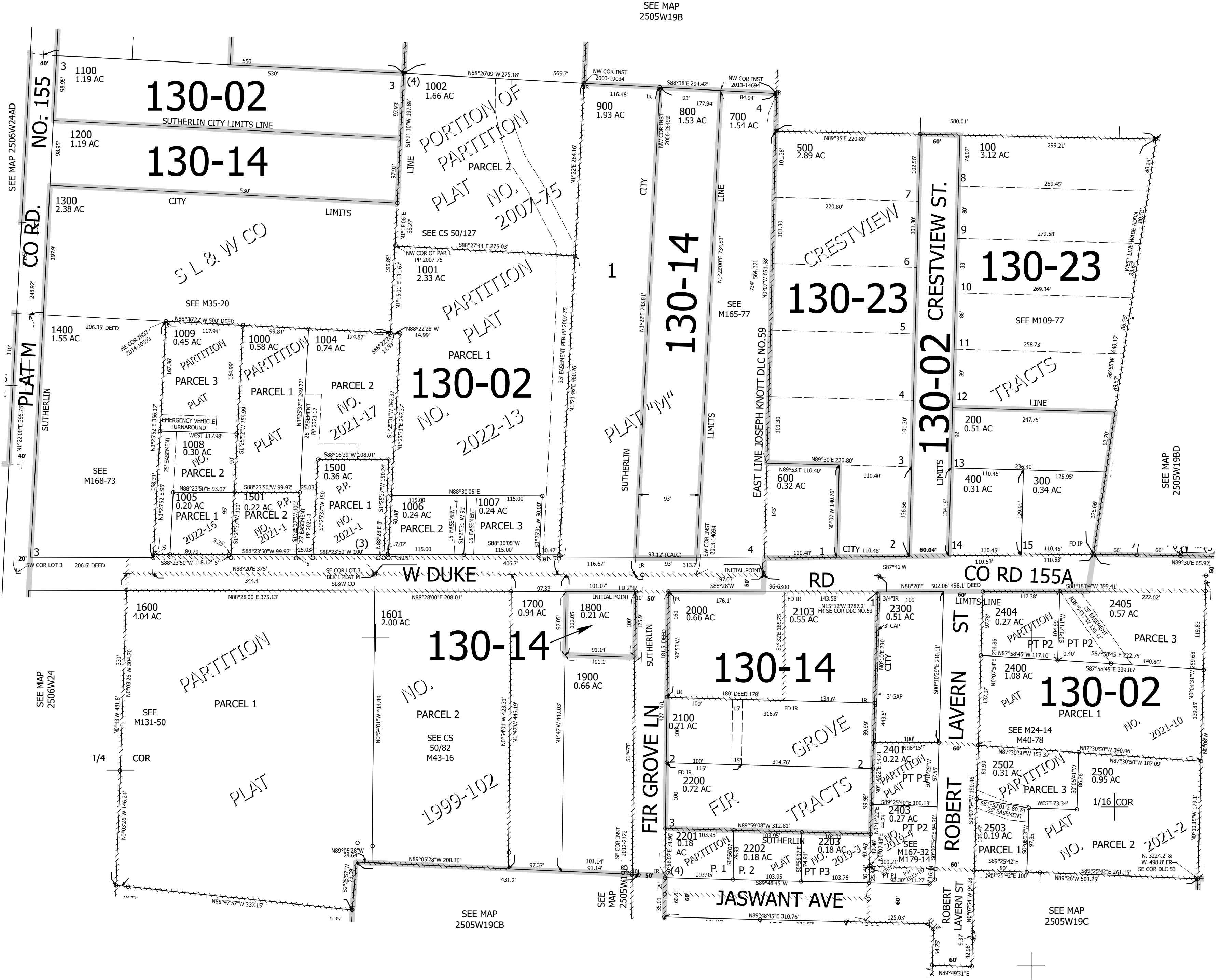
Upper Left:
123°20'53"W 43°23'6"N
4164363E 639076N ft

SW1/4 NW1/4 SEC.19 T.25S. R.05W. W.M.
DOUGLAS COUNTY
1" = 100'

Date Exported 2024-08-14

250519BC
Sutherland

CANCELLED NOS:
2101 2112 1602
2402 2501 1502
1003 2406



SEE MAP
2505W19B

250519BC
Sutherland

Lower Right:
123°20'25"W 43°22'49"N
4166338E 637338N ft