

THIS MAP WAS PREPARED FOR ASSESSMENT PURPOSE ONLY.

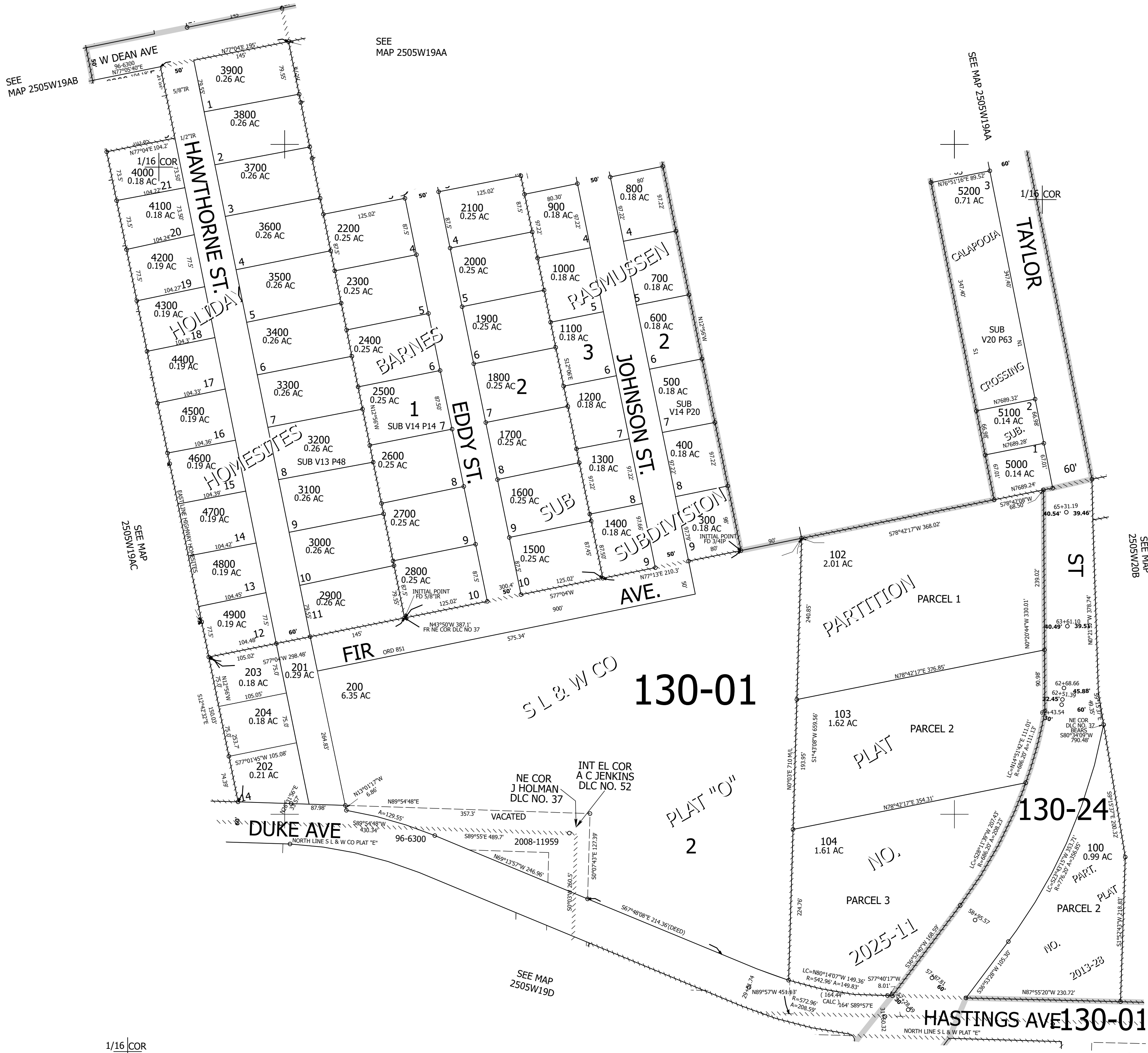
Upper Left:
123°19'57"W 43°23'9"N
4168505E 639296N ft

SE1/4 NE1/4 SEC.19 T.25S. R.05W. W.M.
DOUGLAS COUNTY
1" = 100'

Date Exported 2025-04-10

250519AD
Sutherland

CANCELLED NOS:
101 206 205
207 208 200A1



1/16 COR

1/4 COR

250519AD
Sutherland

Lower Right:
123°19'29"W 43°22'53"N
4170480E 637557N ft