

THIS MAP WAS PREPARED FOR ASSESSMENT PURPOSE ONLY.

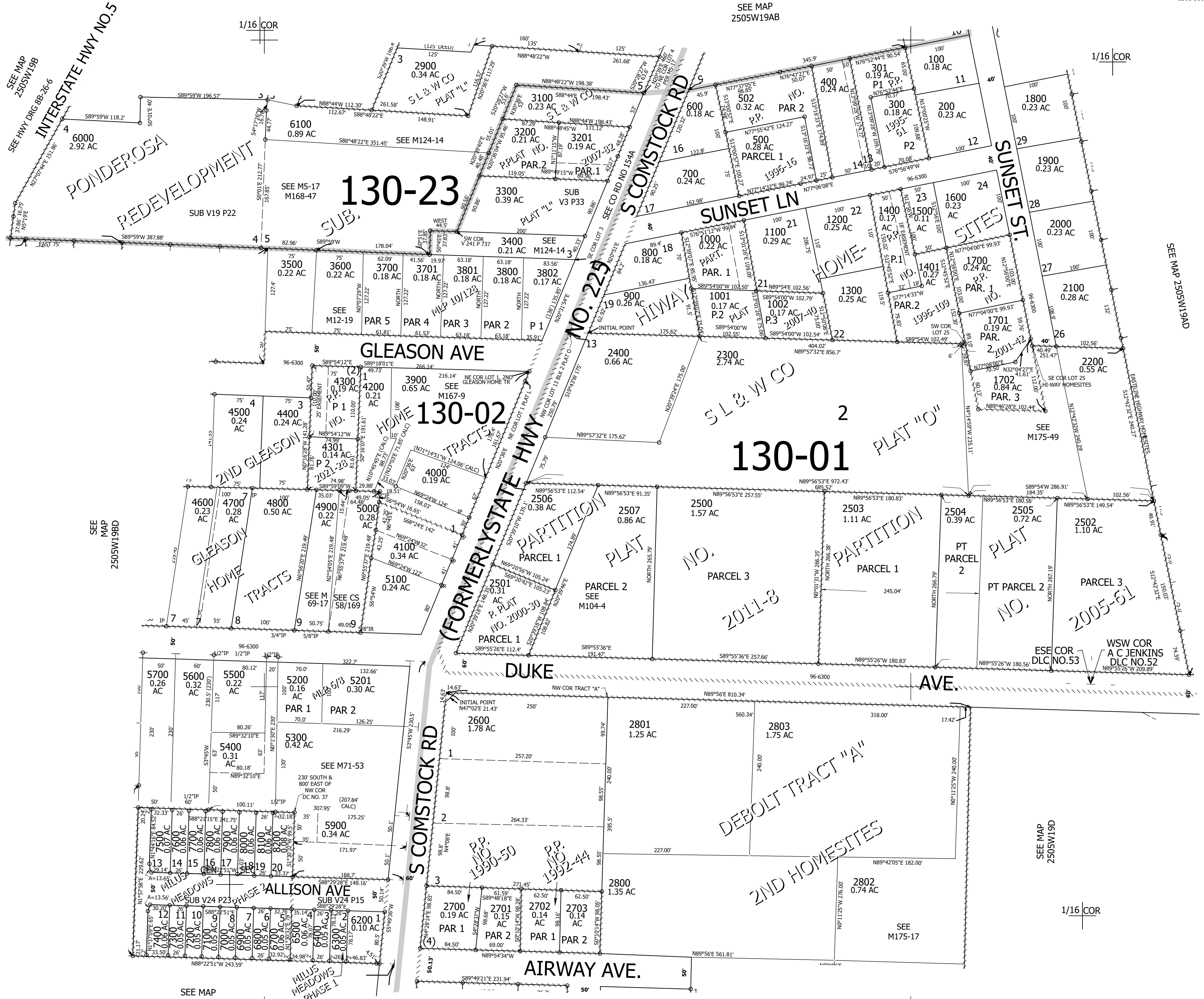
Upper Left:
123°20'17"W 43°23'7"N
4167021E 639169N ft

SW1/4 NE1/4 SEC.19 T.25S. R.05W. W.M.
DOUGLAS COUNTY
1" = 100'

Date Exported 2025-09-11

250519AC
Sutherland

CANCELLED NOS:
200M1 2800A1 3000
501 401 3401
5800M1 2801A1 6101
2301 5800 6600



SEE MAP
2505W19BD

SEE MAP
2505W19AB

SEE MAP
2505W19AD

SEE MAP
2505W19D

SEE MAP
2505W19CA

SEE MAP
2505W19DB

250519AC
Sutherland

Lower Right:
123°19'49"W 43°22'51"N
4168996E 637431N ft