

THIS MAP WAS PREPARED FOR ASSESSMENT PURPOSE ONLY.

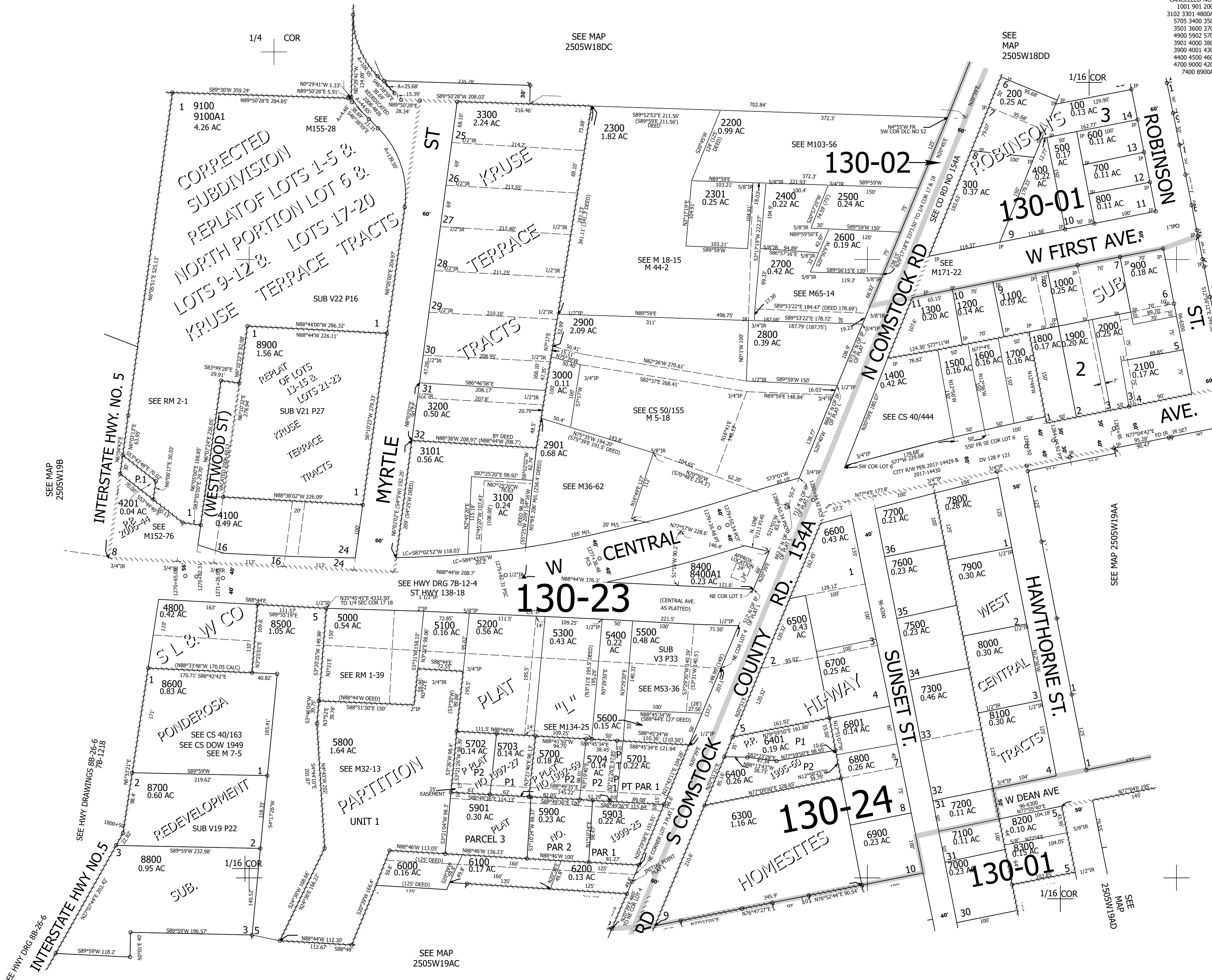
Upper Left:
123°20'16"W 43°23'20"N
4167103E 640478N ft

NW1/4 NE1/4 SEC.19 T.25S. R.05W. W.M.
DOUGLAS COUNTY
1" = 100'

Date Exported 2025-01-09

250519AB
Sutherlin

CANCELLED NOS:
1001 901 2001
3102 3301 4800A1
5705 3400 3500
3501 3600 3700
4900 5902 5706
3901 4000 3800
3900 4001 4300
4400 4500 4600
4700 9000 4200
7400 8900A1



1/4 COR

SEE MAP
2505W18DC

SEE MAP
2505W18DD

SEE MAP
2505W19B

SEE RM 2-1

SUB V22 P16

SUB V21 P27

SEE M152-76

SEE HWY DRG 7B-12-4
ST HWY 138-18

SEE MAP
2505W19AC

130-02

130-01

130-23

130-24

130-01

SEE MAP
2505W19AD

250519AB
Sutherlin

Lower Right:
123°19'49"W 43°23'4"N
4169078E 638740N ft