

THIS MAP WAS PREPARED FOR ASSESSMENT PURPOSE ONLY.

Upper Left:  
123°20'35"W 43°23'35"N  
4165776E 642045N ft

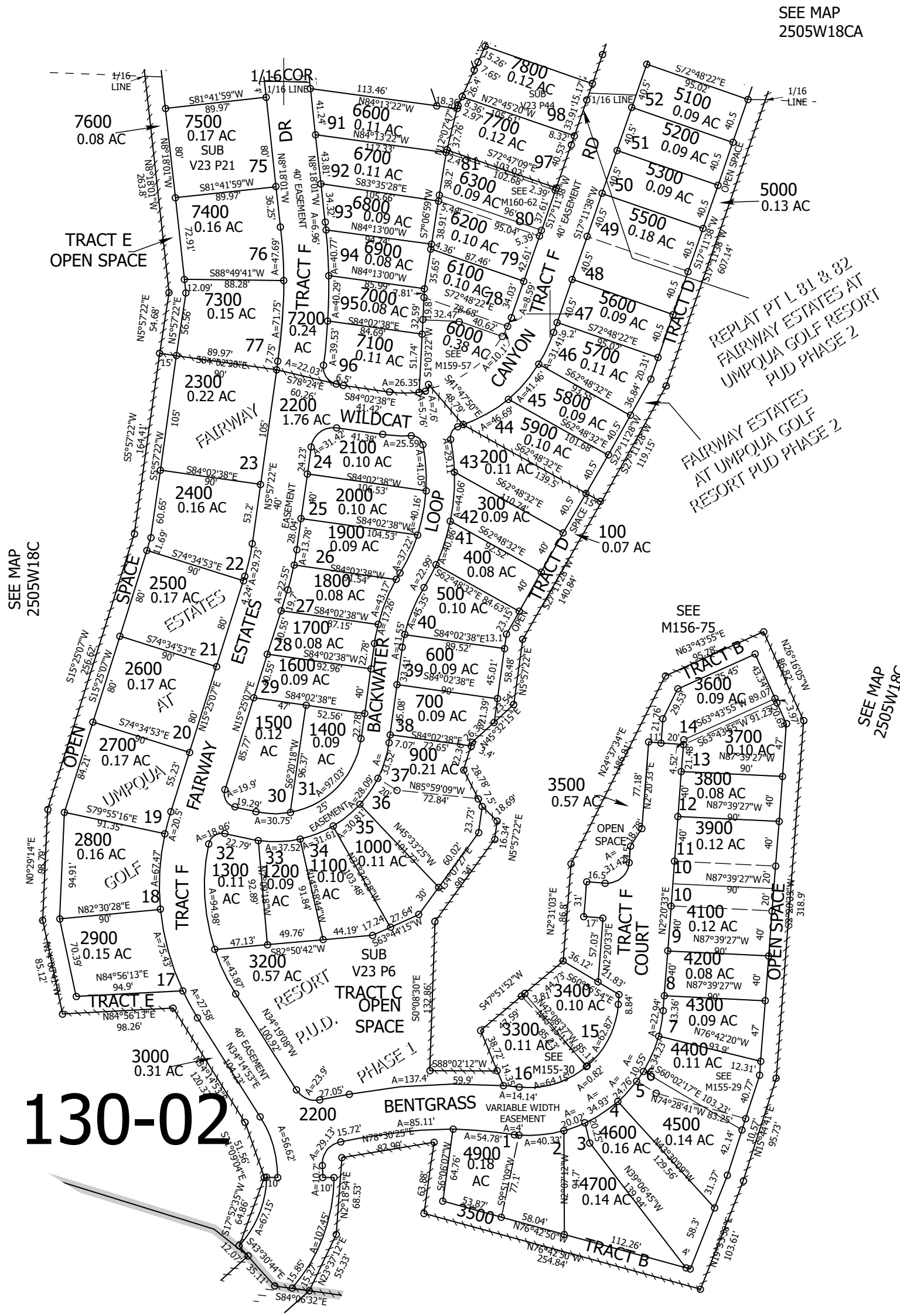
SE1/4 SW1/4 SEC.18 T.25S. R.05W. W.M.  
DOUGLAS COUNTY

1" = 100'

Date Expired: 4/13/2023 2:03 PM

2505W18CD  
& Sutherland

CANCELLED NOS:  
3301 3401 4401  
4501 3601 6001  
6301 6401 6400  
6500 6501 5400  
800 4000 4001  
3100 4800



SEE MAP  
2505W18CA

SEE MAP  
2505W18C

SEE MAP  
2505W18C

SEE MAP  
2505W19B

130-02

1/16 COR

1/16 COR

Lower Right:  
123°20'7"W 43°23'19"N  
4167738E 640306N ft

2505W18CD  
& Sutherland