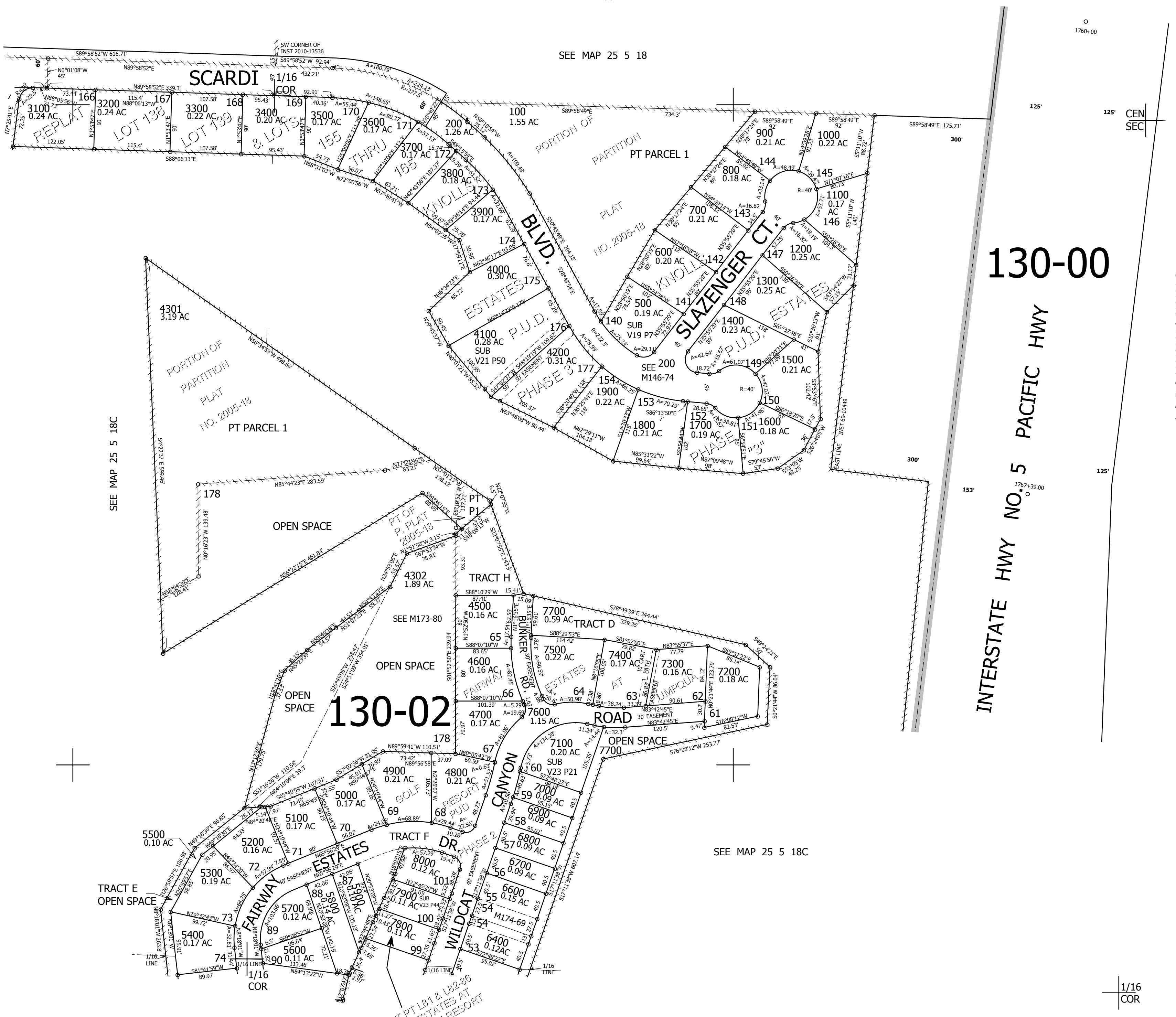


THIS MAP WAS PREPARED FOR ASSESSMENT PURPOSE ONLY.

NE1/4 SW1/4 SEC.18 T.25S. R.5W. W.M. DOUGLAS COUNTY 1" = 100'

REVISED ON 1-19-21

25 5 18CA SUTHERLIN



SEE MAP 25 5 18C

SEE MAP 25 5 18

SEE MAP 25 5 18C

SEE MAP 25 5 18CD

130-00

130-02

- CANCELLED NOS 201 202 203 204 300 301 302 400 401 402 403 2000 2001 2100 2101 2200 2300 2400 2500 2600 2700 2800 2900 3000 4304 6000 6100 6101 THRU 6301 4400 6501 6500 4300 4303

SEE MAP 25 5 18

642,000

1/16 COR

25 5 18CA SUTHERLIN

4,167,000