

THIS MAP WAS PREPARED FOR ASSESSMENT PURPOSE ONLY.

Upper Left:
123°20'54"W 43°24'N
4164420E 644535N ft

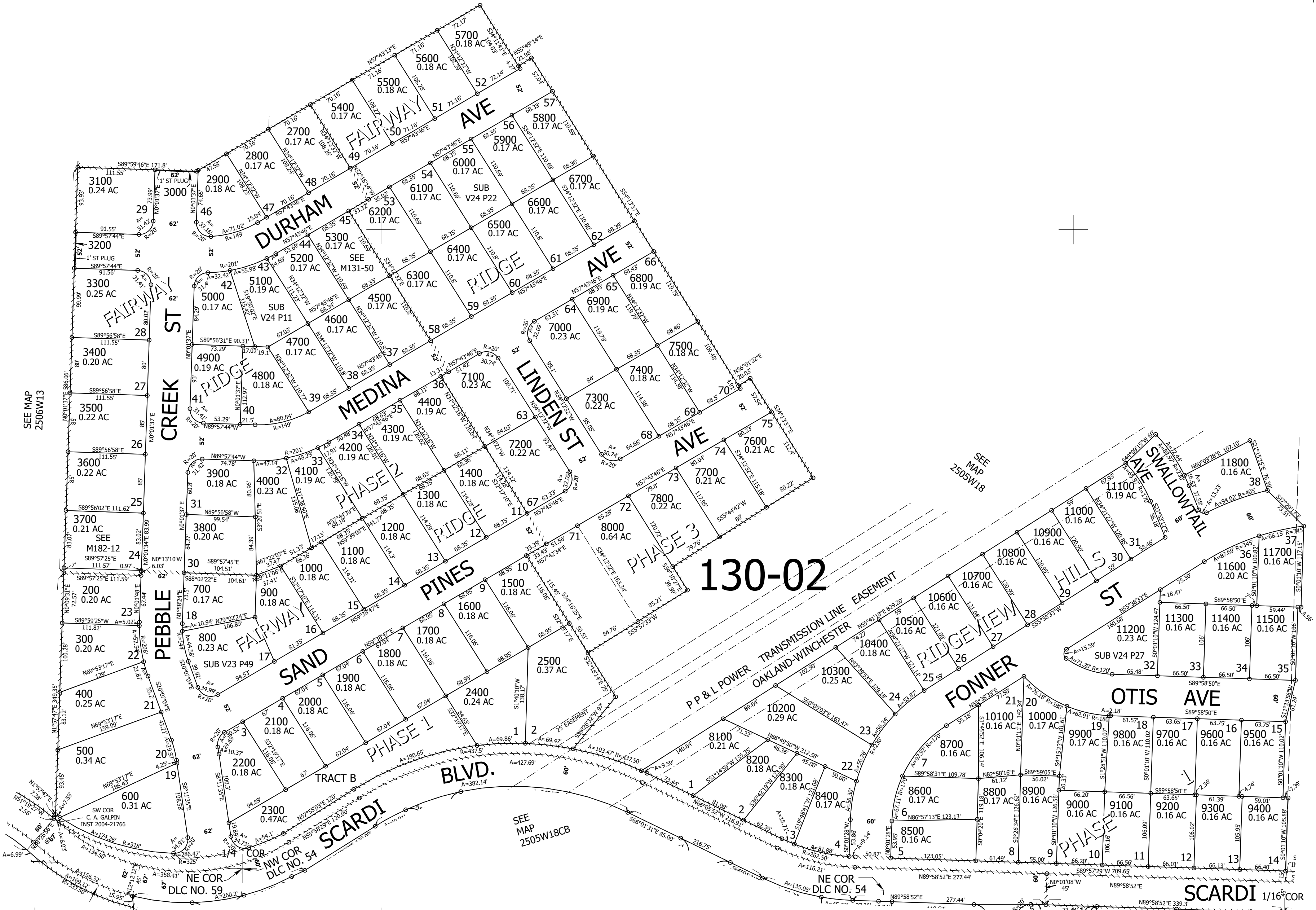
SW1/4 NW1/4 SEC.18 T.25S. R.5W. W.M.
DOUGLAS COUNTY
1" = 100'

Date Exported 2025-12-02

250518BC
Sutherland

CANCELLED NOS:
100 3701 2600
7900

1/16 COR



SEE MAP
2506W13

SEE MAP
2505W18

SEE MAP
2505W18CA

SEE MAP
2506W13DA

SEE MAP
2505W18CB

250518BC
Sutherland

Lower Right:
123°20'27"W 43°23'43"N
4166397E 642814N ft