

THIS MAP WAS PREPARED FOR ASSESSMENT PURPOSE ONLY.

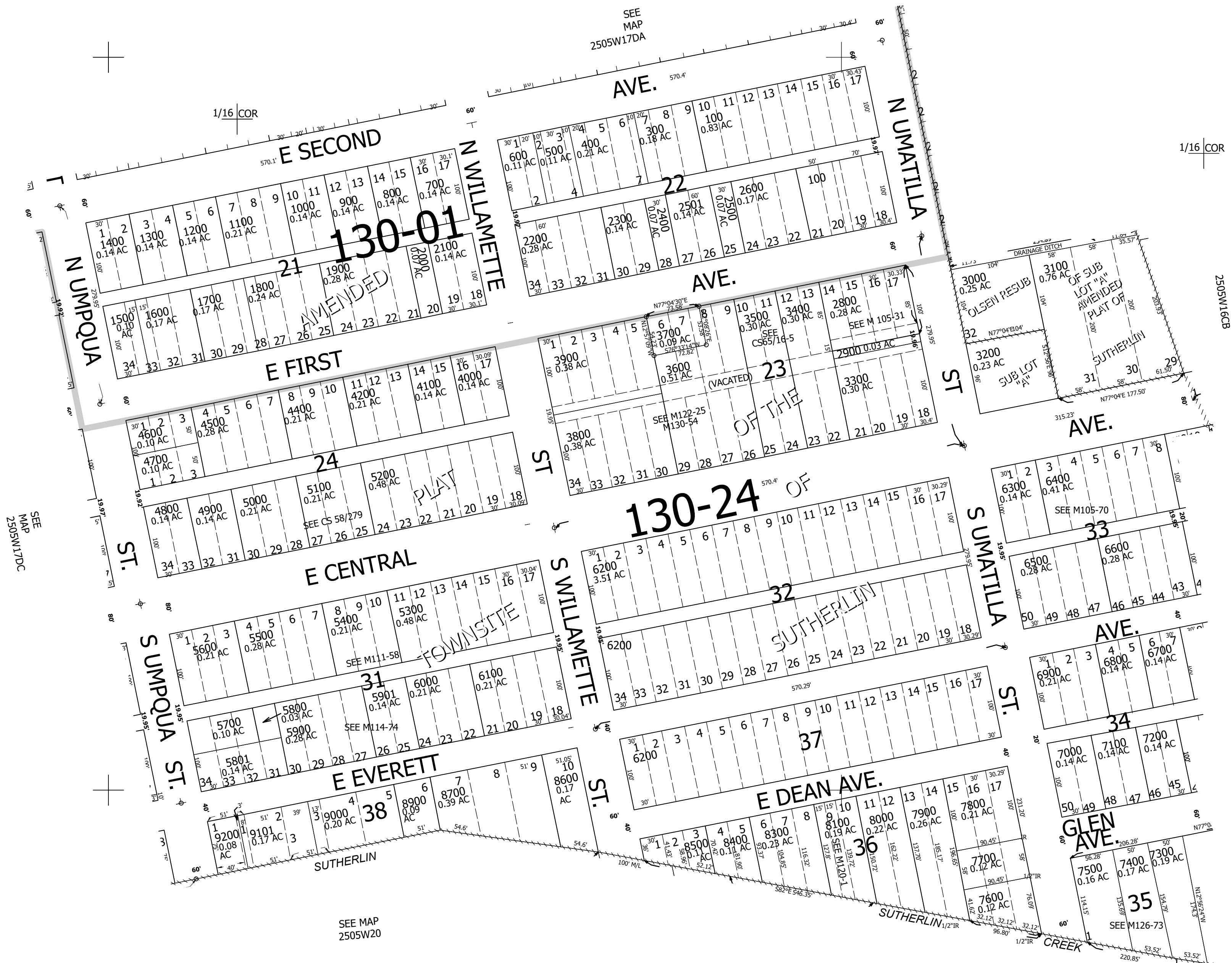
Upper Left:
123°18'47"W 43°23'36"N
4173717E 641781N ft

SE1/4 SE1/4 SEC.17 T.25S. R.05W. W.M.
DOUGLAS COUNTY
1" = 100'

Date Expired 2024-04-03

250517DD
Sutherland

CANCELLED NOS:
5902 8200 8800
9100 2901 4300
4401 7400M1 9101M1
3701 3601 1201
9201 200 2700



SEE MAP 2505W17DC

SEE MAP 2505W16CB

SEE MAP 2505W16CC

SEE MAP 2505W20

SEE MAP 2505W20AA

1/16 COR

Lower Right:
123°18'20"W 43°23'19"N
4175679E 640042N ft

250517DD
Sutherland