

THIS MAP WAS PREPARED FOR ASSESSMENT PURPOSE ONLY.

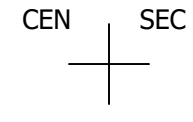
Upper Left:
123°19'3"W 43°23'46"N
4172598E 642854N ft

NW1/4 SE1/4 SEC.17 T.25S. R.05W. W.M.
DOUGLAS COUNTY
1" = 100'

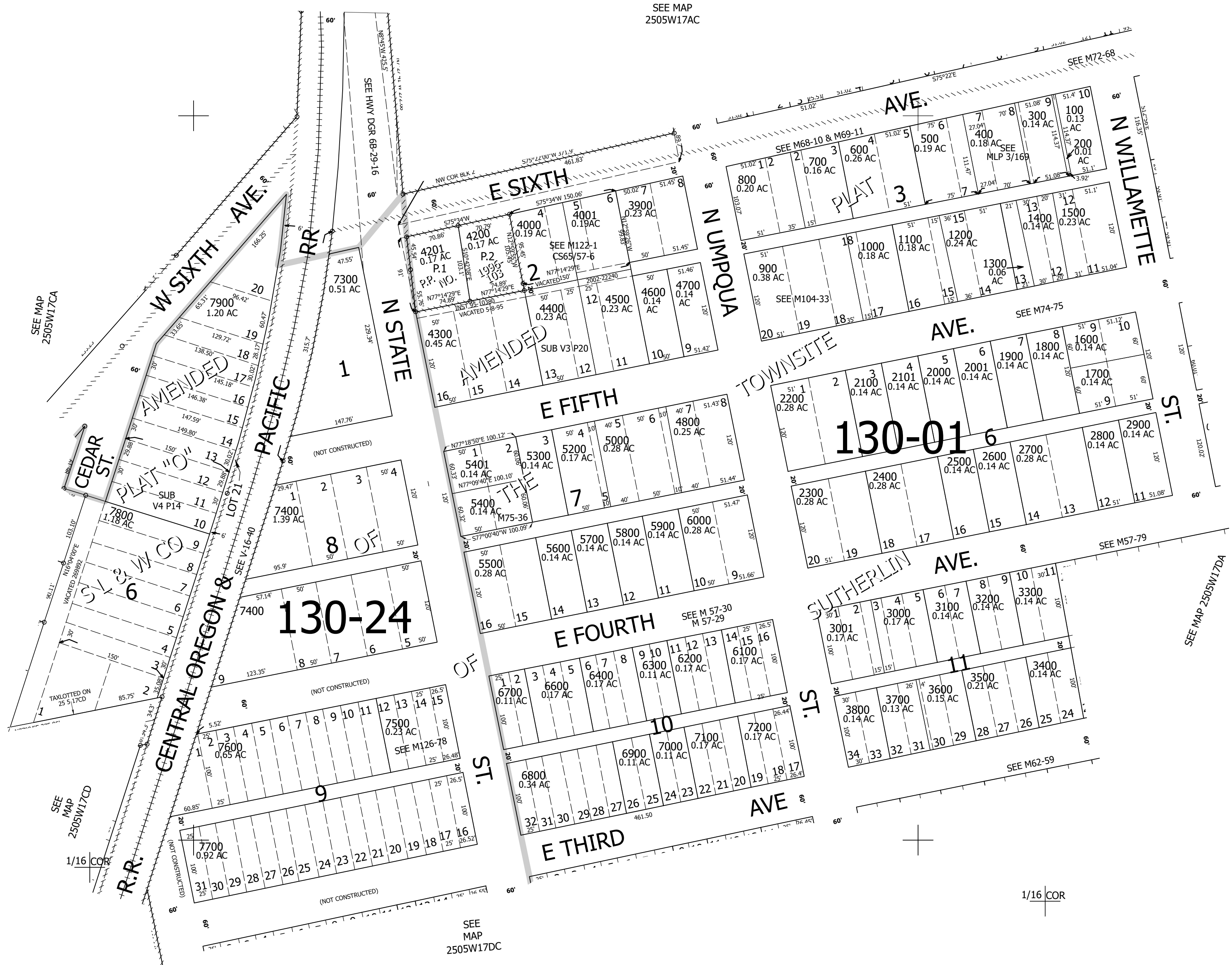
Date Exported 2025-01-08

250517DB
Sutherland

CANCELLED NOS:
7801 4100 2800M1
6500 5100 8001
8000



1/16 COR



SEE MAP
2505W17AC

SEE MAP
2505W17CA

SEE MAP
2505W17CD

SEE MAP
2505W17DC

SEE MAP 2505W17DA

1/16 COR

250517DB
Sutherland

Lower Right:
123°18'35"W 43°23'29"N
4174573E 641115N ft