

THIS MAP WAS PREPARED FOR ASSESSMENT PURPOSE ONLY.

SW1/4 SW1/4 SEC.17 T.25S. R.5W. W.M.

DOUGLAS COUNTY

1" = 100'

REVISED ON 2-10-22

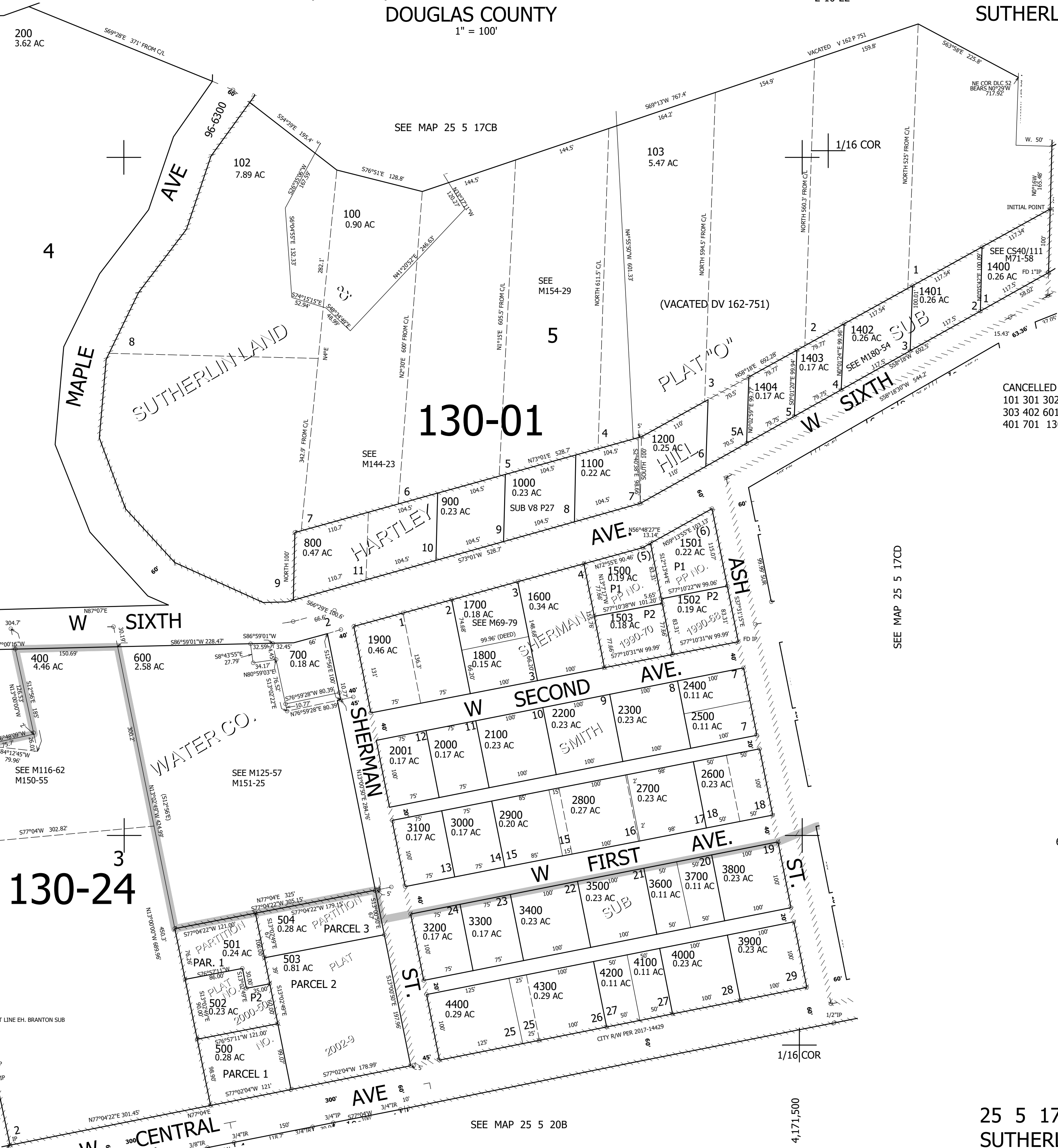
25 5 17CC SUTHERLIN

1/16 COR

SEE MAP 25 5 18DD

18 17 19 20

SEE MAP 25 5 20BB



130-01

130-24

CANCELLED NOS  
101 301 302  
303 402 601  
401 701 1300

SEE MAP 25 5 17CD

640,500

SEE MAP 25 5 20B

SEE MAP 25 5 20BB

25 5 17CC SUTHERLIN