

THIS MAP WAS PREPARED FOR ASSESSMENT PURPOSE ONLY.

Upper Left:  
123°19'42"W 43°24'13"N  
4169806E 645743N ft

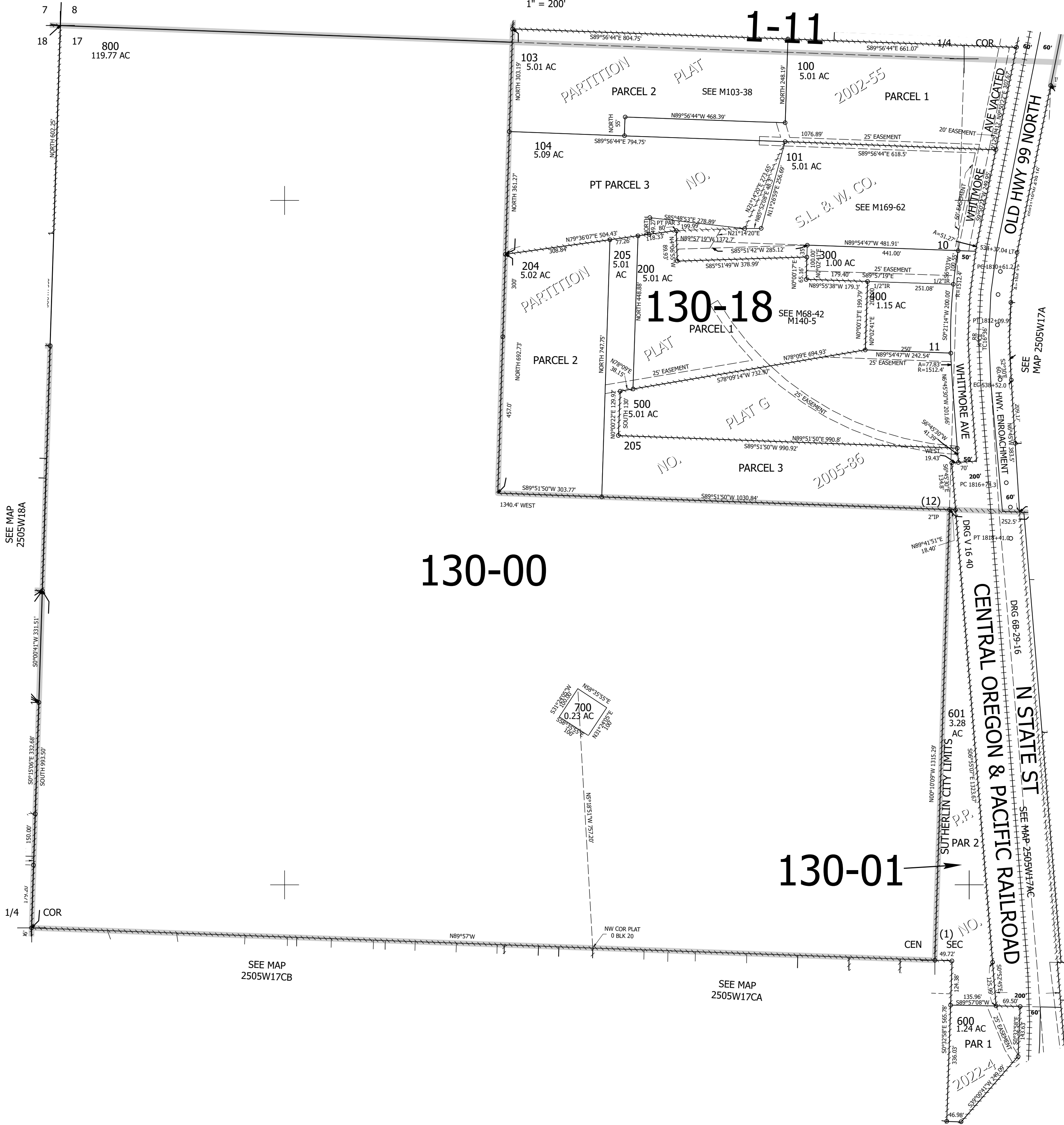
NW1/4 SEC.17 T.25S. R.05W. W.M.  
DOUGLAS COUNTY  
1" = 200'

SEE MAP 2505W08

Date Exported 2025-11-18

250517B  
& INDEX  
Sutherlin

CANCELLED NOS:  
200M1 102 201  
202 501 105  
106 107 203  
108 109



SEE MAP  
2505W18A

SEE MAP  
2505W17CB

SEE MAP  
2505W17CA

SEE MAP 2505W17AC

SEE MAP 2505W17A

SEE MAP 2505W17A

SEE MAP 2505W17A

SEE MAP 2505W17A

Lower Right:  
123°18'47"W 43°23'39"N  
4173732E 642143N ft

250517B  
& INDEX  
Sutherlin