

THIS MAP WAS PREPARED FOR ASSESSMENT PURPOSE ONLY.

Upper Left:
123°19'2"W 43°23'59"N
4172673E 644167N ft

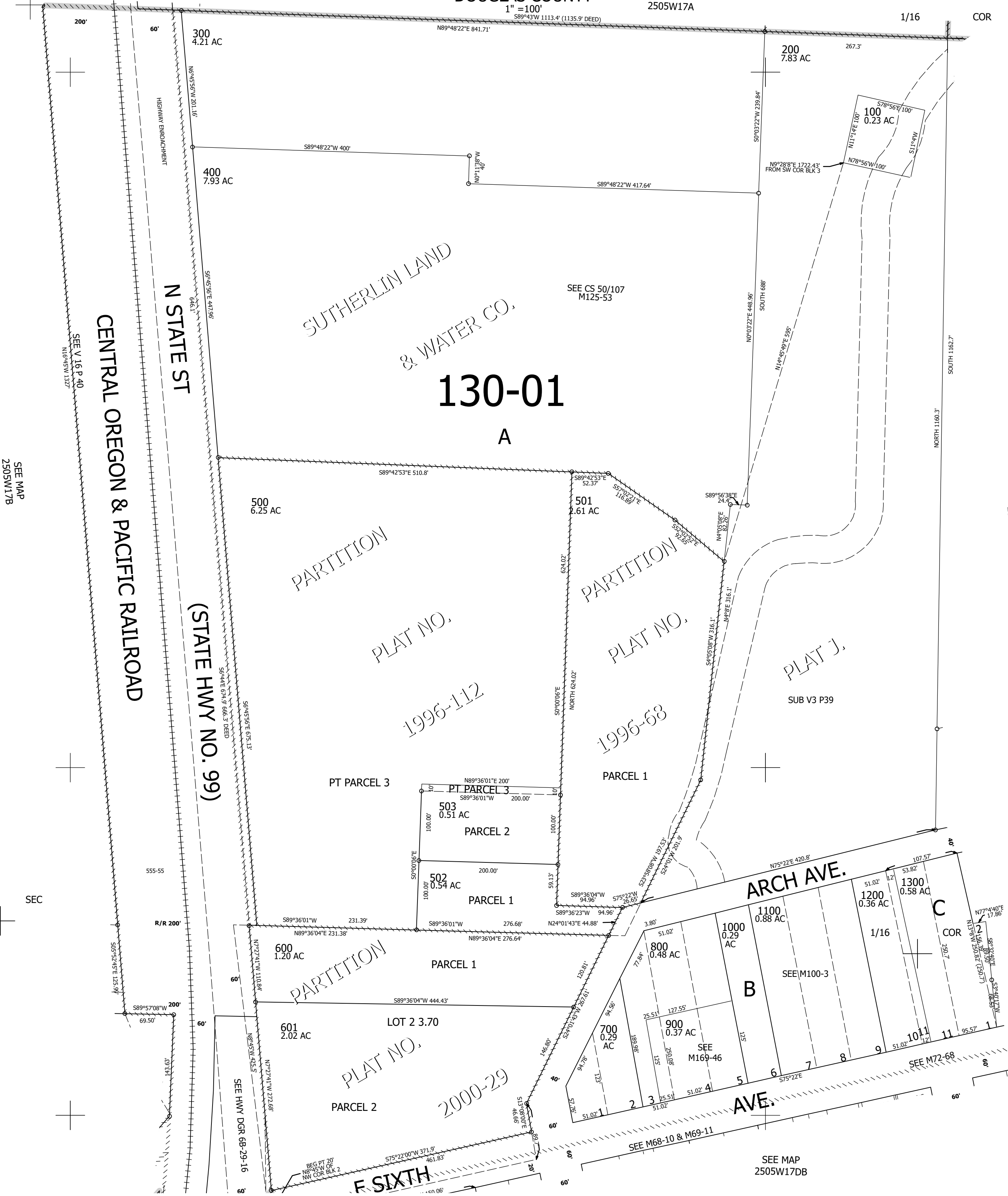
SW1/4 NE1/4 SEC.17 T.25S. R.05W. W.M.
DOUGLAS COUNTY
1" = 100'
S89°43'W 1113.4' (1135.9' DEED)

Date Exported 2024-02-21

250517AC
Sutherland

CANCELLED NOS:
600U4 600U2 600U3
600U1 504

SEE MAP
2505W17A



SEE MAP
2505W17B

SEE MAP
2505W17AD

CEN SEC

250517AC
Sutherland

Lower Right:
123°18'35"W 43°23'42"N
4174635E 642388N ft

SEE MAP
2505W17DB