

THIS MAP WAS PREPARED FOR ASSESSMENT PURPOSE ONLY.

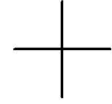
SW1/4 SE1/4 SEC.16 T.25S. R.5W. W.M.  
DOUGLAS COUNTY  
1" = 100'

REVISED ON  
11-22-04

25 5 16DC  
SUTHERLIN

CANCELLED NOS  
1100 1101

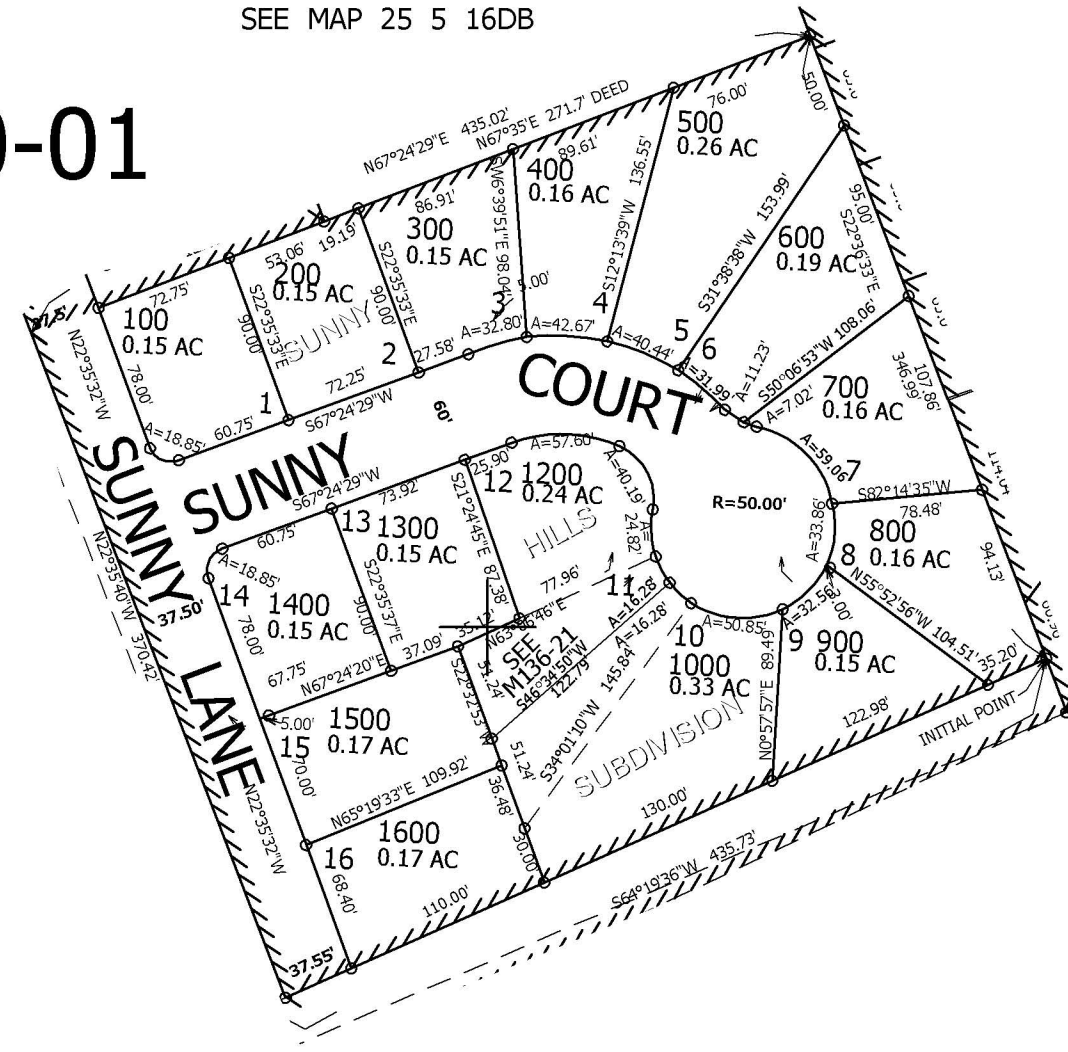
1/16  
COR



130-01

SEE MAP 25 5 16DB

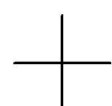
SEE MAP 25 5 16D



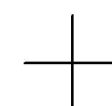
SEE MAP 25 5 16DB

1/16  
COR

SEE MAP 25 5 16D



1/4  
COR



640,000

1/16  
COR

4,197,500

25 5 16DC  
SUTHERLIN