

THIS MAP WAS PREPARED FOR ASSESSMENT PURPOSE ONLY.

SE1/4 SEC.16 T.25S. R.5W. W.M.
DOUGLAS COUNTY

REVISED ON
7-13-17

25 5 16D
& INDEX
SUTHERLIN

1" = 200'

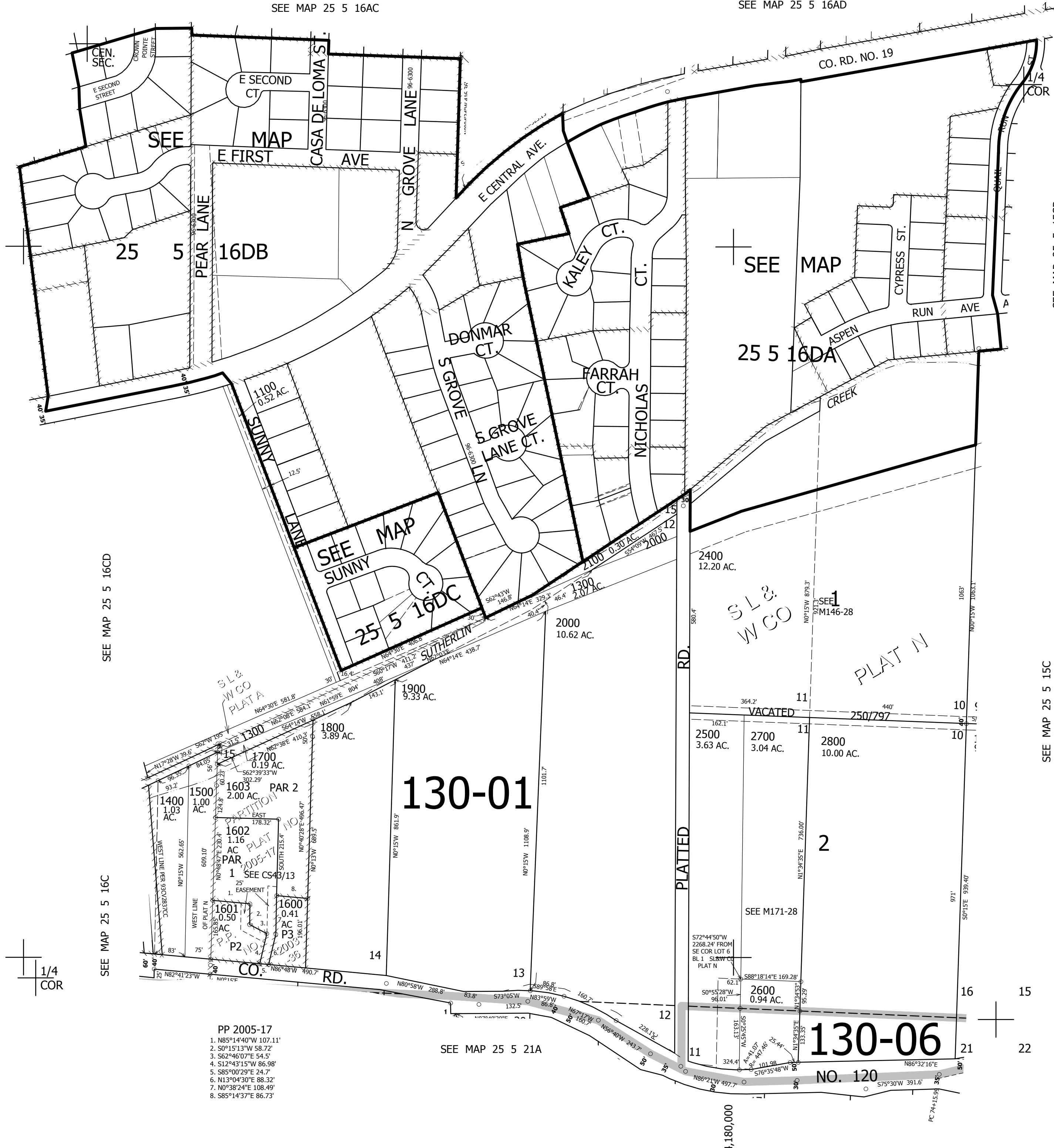
SEE MAP 25 5 16AC

SEE MAP 25 5 16AD

SEE MAP 25 5 16CA

SEE MAP 25 5 15CB

CANCELLED NOS
900 701 702
502 703 1000
2900 100 200
300 400 500
501 600 700
800 2200 2300
1200 2601



SEE MAP 25 5 16CD

SEE MAP 25 5 16C

SEE MAP 25 5 15C

130-01

130-06

- PP 2005-17
1. N85°14'40"W 107.11'
 2. S0°15'13"W 58.72'
 3. S62°46'07"E 54.5'
 4. S12°43'15"W 86.98'
 5. S85°00'29"E 24.7'
 6. N13°04'30"E 88.32'
 7. N0°38'24"E 108.45'
 8. S85°14'37"E 86.73'

SEE MAP 25 5 21A

640,000

25 5 16D
& INDEX
SUTHERLIN