

THIS MAP WAS PREPARED FOR ASSESSMENT PURPOSE ONLY.

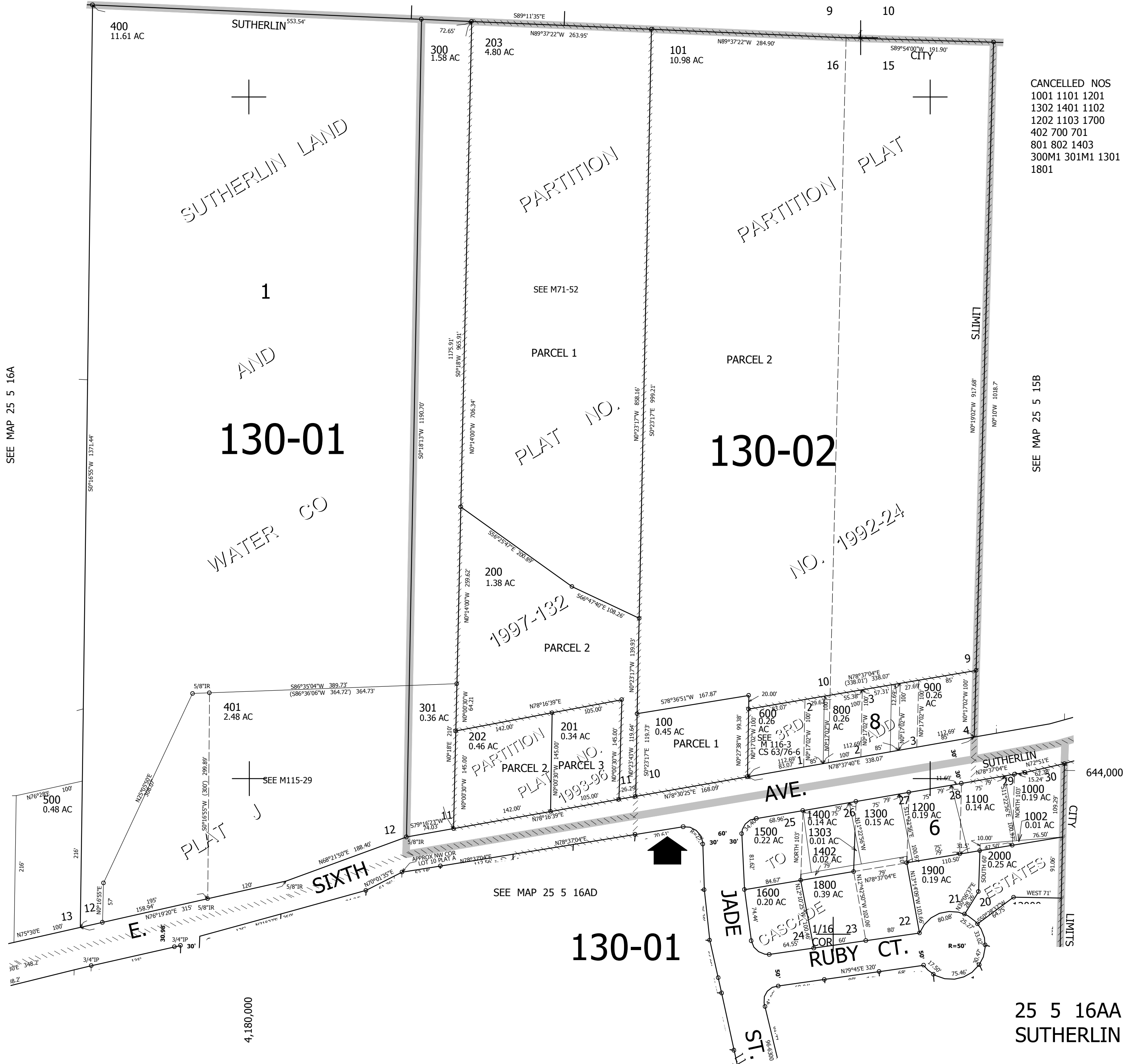
NE1/4 NE1/4 SEC.16 T.25S. R.5W. W.M.
DOUGLAS COUNTY
1" = 100'

REVISED ON
1-26-21

25 5 16AA
SUTHERLIN

1/16 COR

SEE MAP 25 5 9



CANCELLED NOS
1001 1101 1201
1302 1401 1102
1202 1103 1700
402 700 701
801 802 1403
300M1 301M1 1301
1801

SEE MAP 25 5 16A

SEE MAP 25 5 15B

130-01

130-02

130-01

SEE MAP 25 5 16AD

25 5 16AA
SUTHERLIN