

THIS MAP WAS PREPARED FOR ASSESSMENT PURPOSE ONLY.

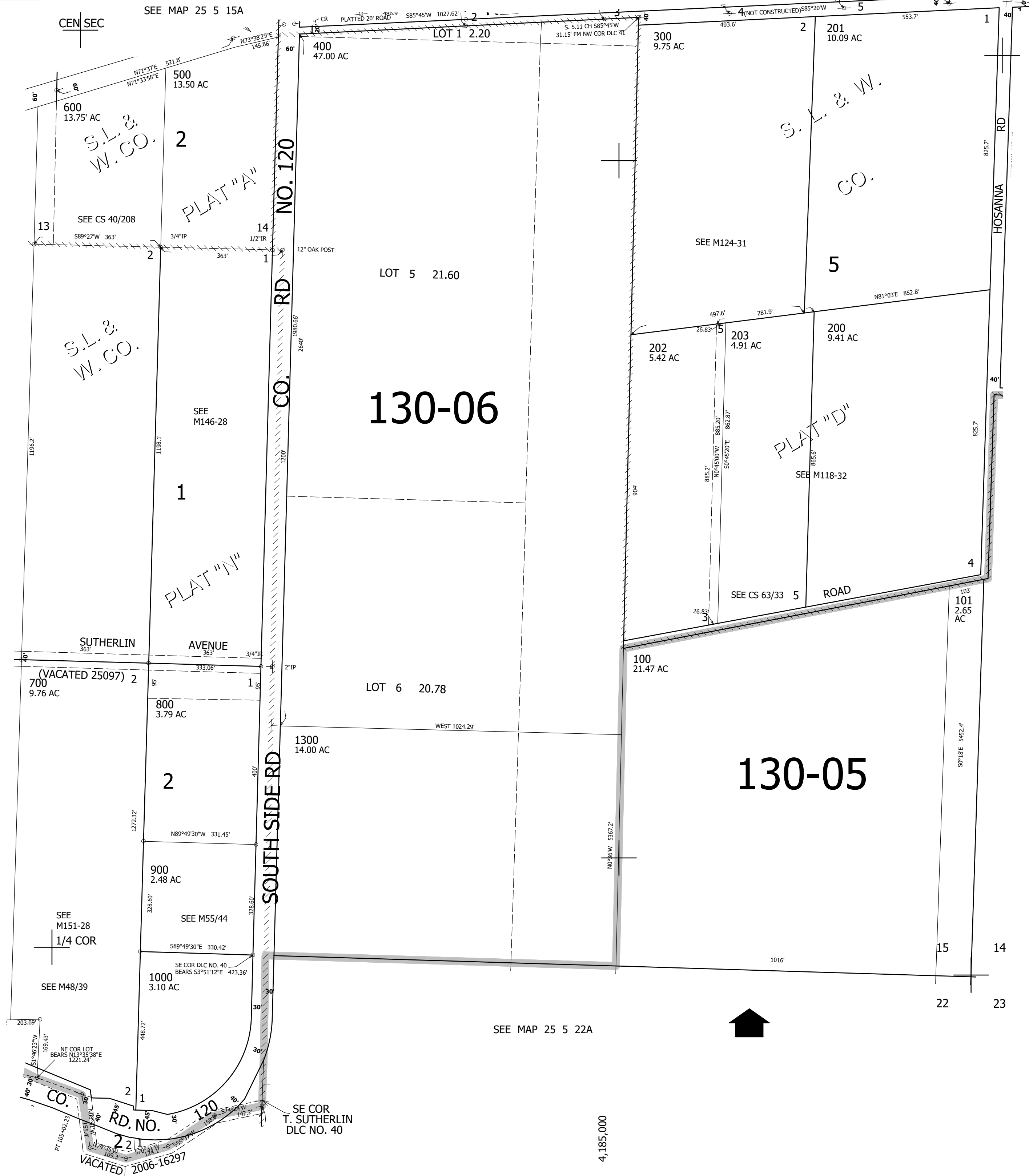
SE1/4 SEC.15 T.25S. R.5W. W.M.  
DOUGLAS COUNTY

REVISED ON  
11-20-09

25 5 15D

1" = 200'

SEE MAP 25 5 15A



CANCELLED NOS  
204 701 1100  
1200

SEE MAP 25 5 15C

SEE MAP 25 5 14C

640,000

4,185,000

25 5 15D