

THIS MAP WAS PREPARED FOR ASSESSMENT PURPOSE ONLY.

CEN SEC

SE1/4 SEC.14 T.25S. R.5W. W.M.  
DOUGLAS COUNTY

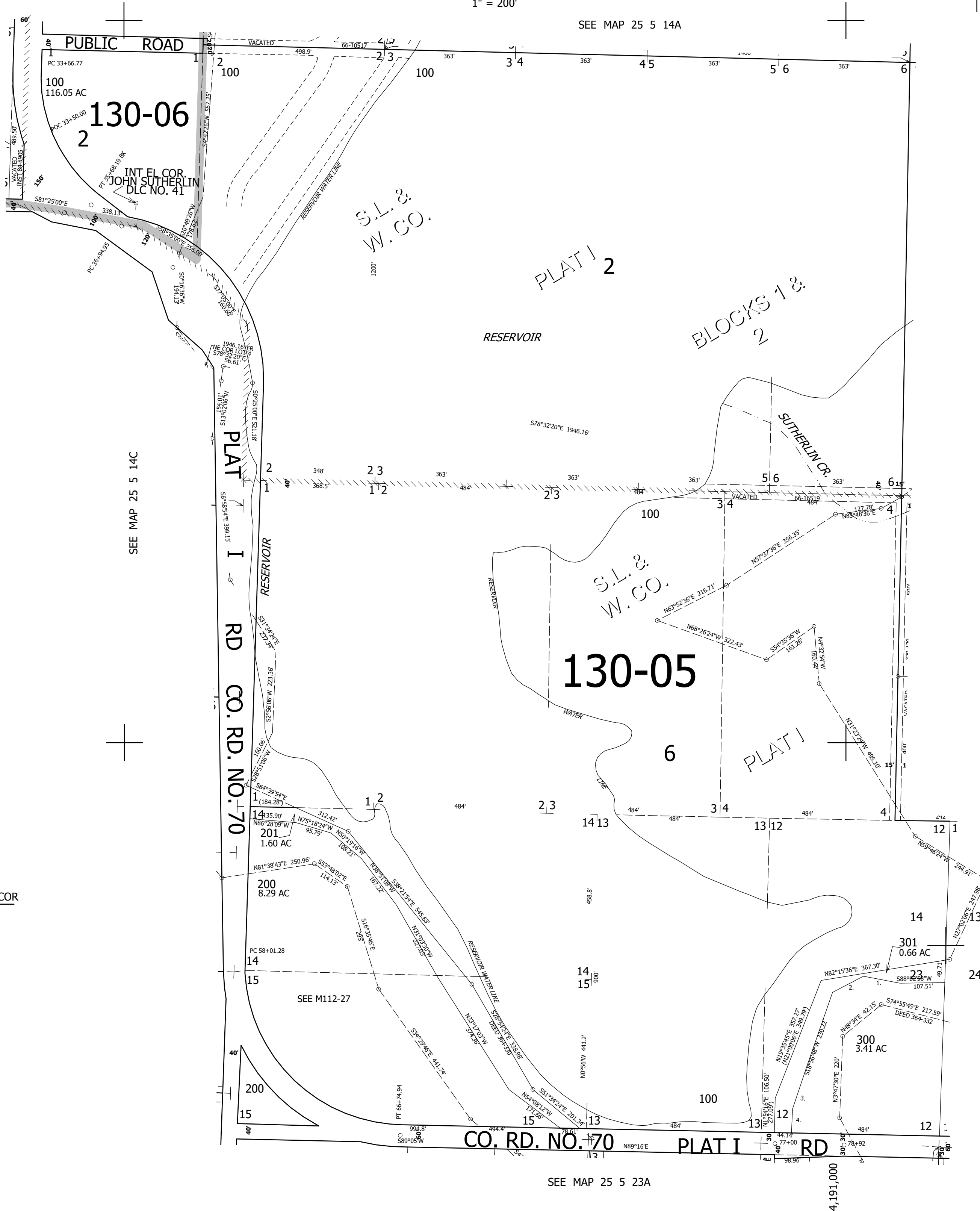
1" = 200'

REVISED ON  
1-8-98

25 5 14D

1/4 COR

SEE MAP 25 5 14A



CANCELLED NOS

SEE MAP 25 5 14C

SEE MAP 25 5 13C

640,000

1/4 COR

PARCEL 301

1. N80°16'18"W 110.4'
2. S61°12'24"W 92.7'
3. S16°48'05"W 115.45'
4. S2°34'24"W 83.46'

SEE MAP 25 5 23A

25 5 14D