

THIS MAP WAS PREPARED FOR ASSESSMENT PURPOSE ONLY.

SW1/4 SEC.14 T.25S. R.5W. W.M. DOUGLAS COUNTY

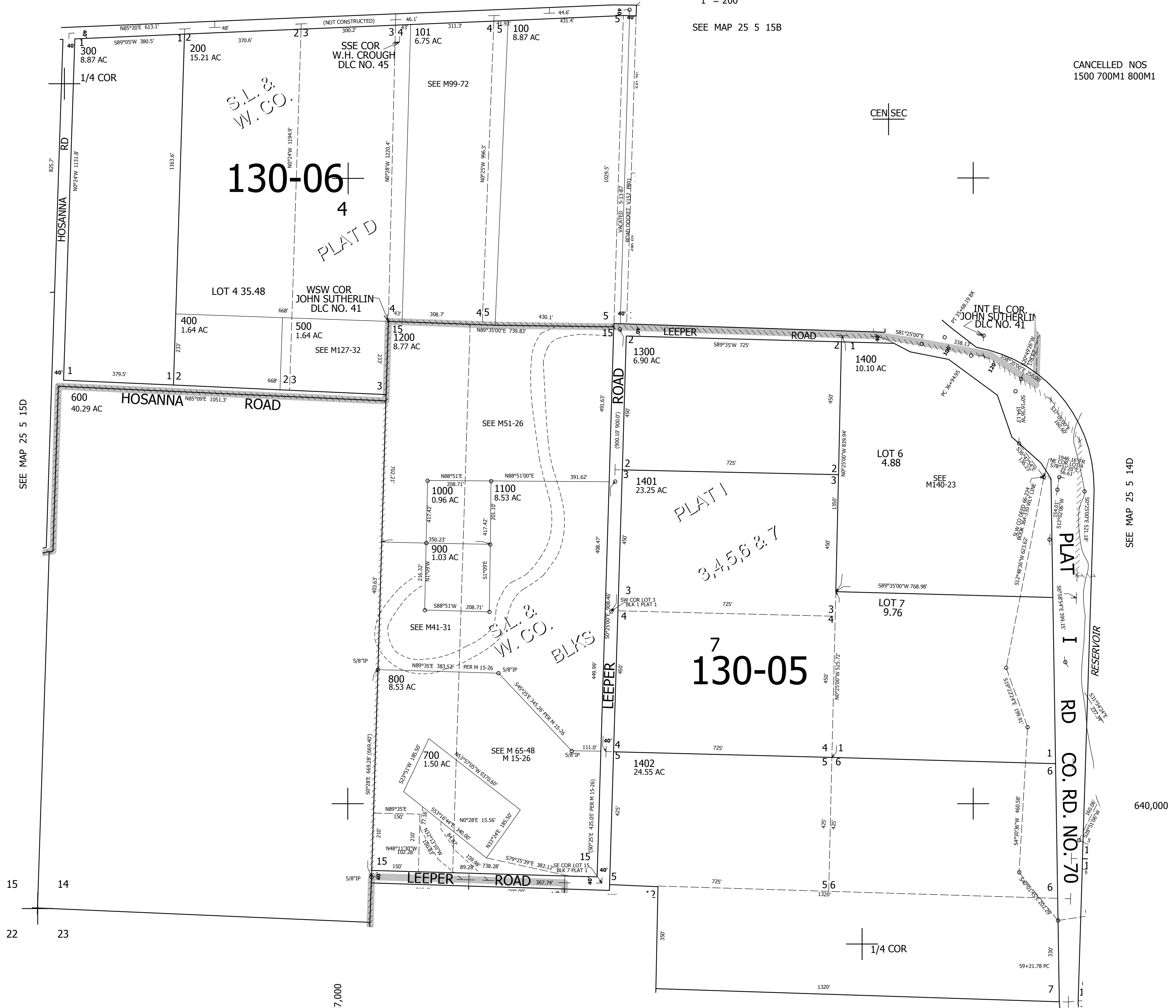
REVISED ON 1-9-18

25 5 14C

1" = 200'

SEE MAP 25 5 15B

CANCELLED NOS 1500 700M1 800M1



SEE MAP 25 5 15D

SEE MAP 25 5 14D

640,000

SEE MAP 25 5 23B

25 5 14C