

THIS MAP WAS PREPARED FOR ASSESSMENT PURPOSE ONLY.

SW1/4 SEC.13 T.25S. R.5W. W.M.
DOUGLAS COUNTY
1" = 200'

REVISED ON
12-19-19

25 5 13C

1/4
COR

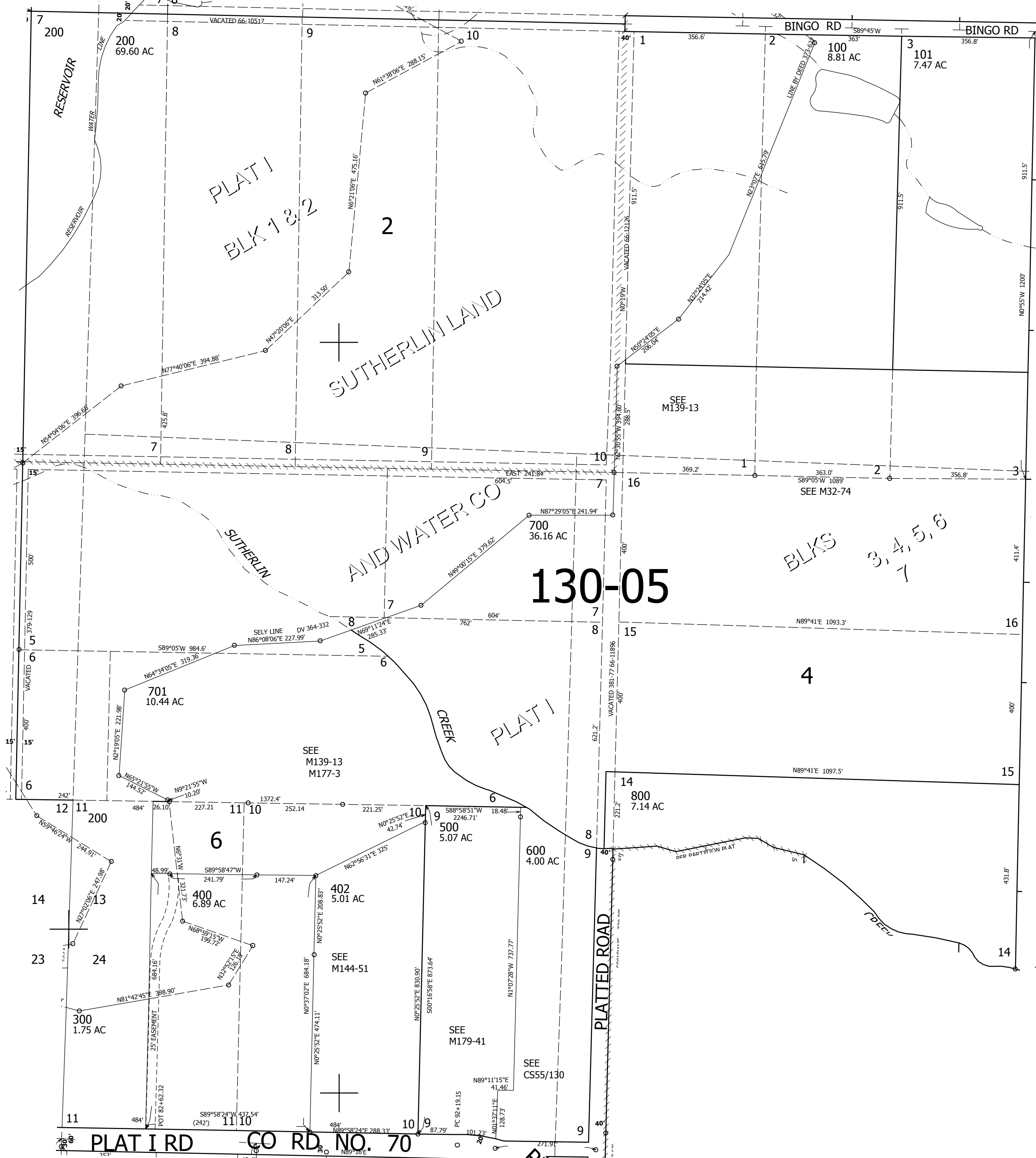
CEN
SEC

SEE MAP 25 5 13B

SEE MAP 25 5 14D

SEE MAP 25 5 13D

CANCELLED NOS
401 403 404



1/4
COR

CEN
SEC

4,194,000

639,000

25 5 13C

SEE MAP 25 5 24B