

THIS MAP WAS PREPARED FOR ASSESSMENT PURPOSE ONLY.

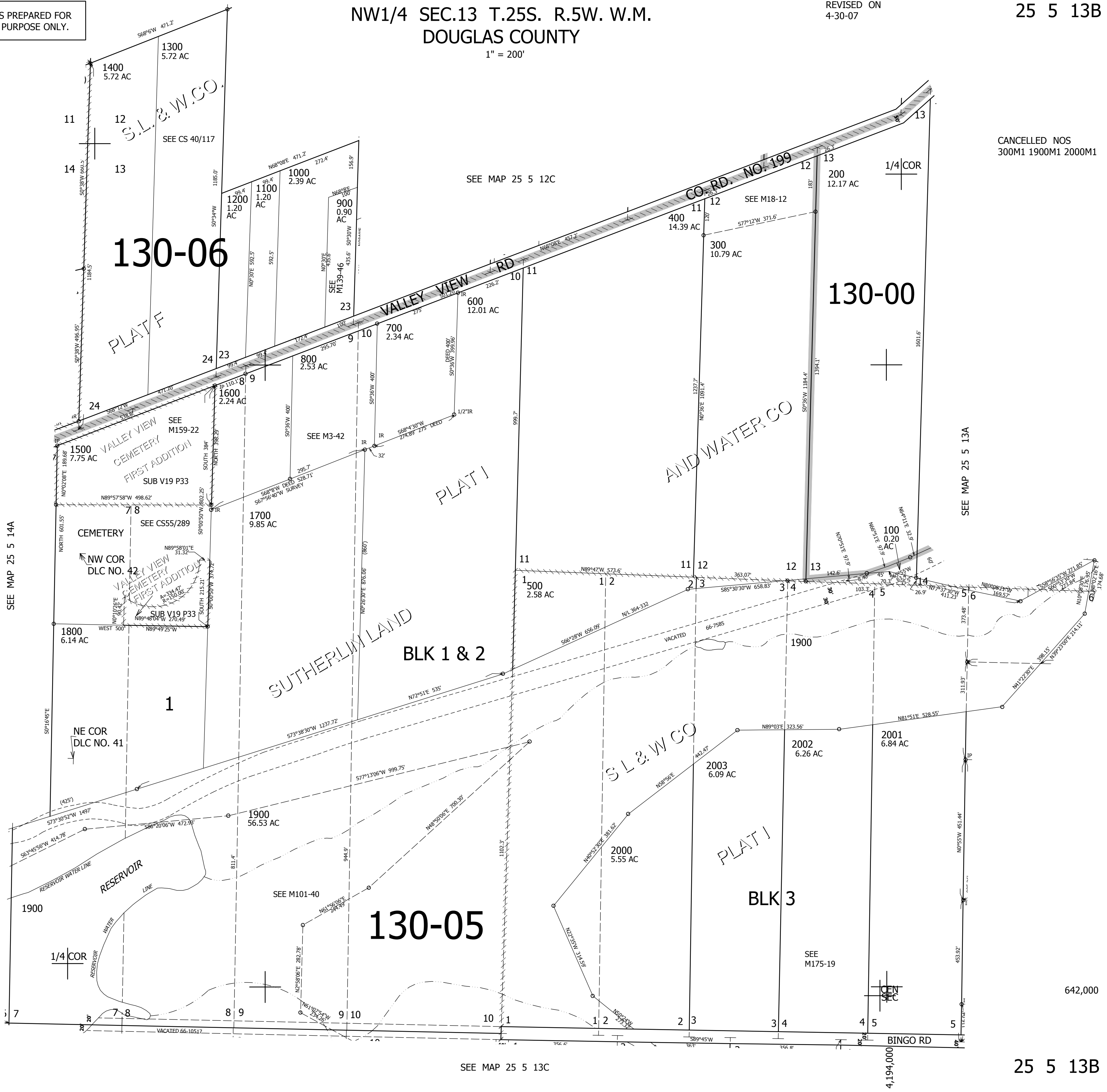
NW1/4 SEC.13 T.25S. R.5W. W.M.
DOUGLAS COUNTY

1" = 200'

REVISED ON
4-30-07

25 5 13B

CANCELLED NOS
300M1 1900M1 2000M1



SEE MAP 25 5 14A

SEE MAP 25 5 12C

SEE MAP 25 5 13A

SEE MAP 25 5 13C

642,000

25 5 13B