

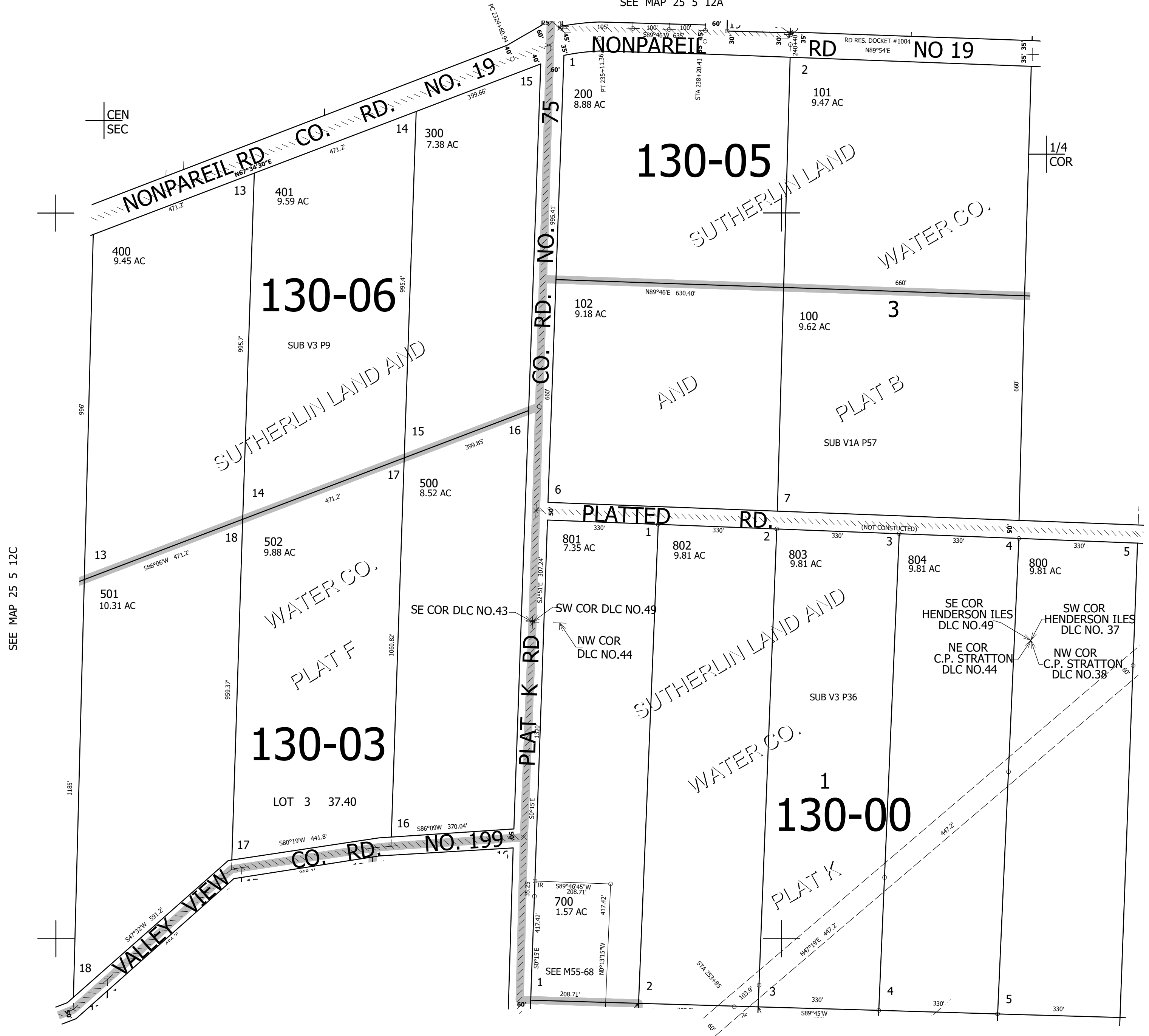
THIS MAP WAS PREPARED FOR ASSESSMENT PURPOSE ONLY.

SE1/4 SEC.12 T.25S. R.5W. W.M.
DOUGLAS COUNTY
1" = 200'

REVISED ON
4-22-22

25 5 12D

SEE MAP 25 5 12A



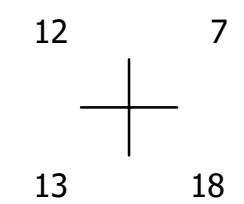
CANCELLED NOS
600 600M1 700M1
800M1 103

SEE MAP 25 5 12C

SEE MAP 25 4 7

645,000

SEE MAP 25 5 13A



4,196,000

25 5 12D