

THIS MAP WAS PREPARED FOR ASSESSMENT PURPOSE ONLY.

SEE MAP 25 5 1

130-00

25 5 12B

SEE MAP 25 5 11

SEE MAP 25 5 11D

REVISED ON 3-31-05

CANCELLED NOS 200M1 400M1

130-05

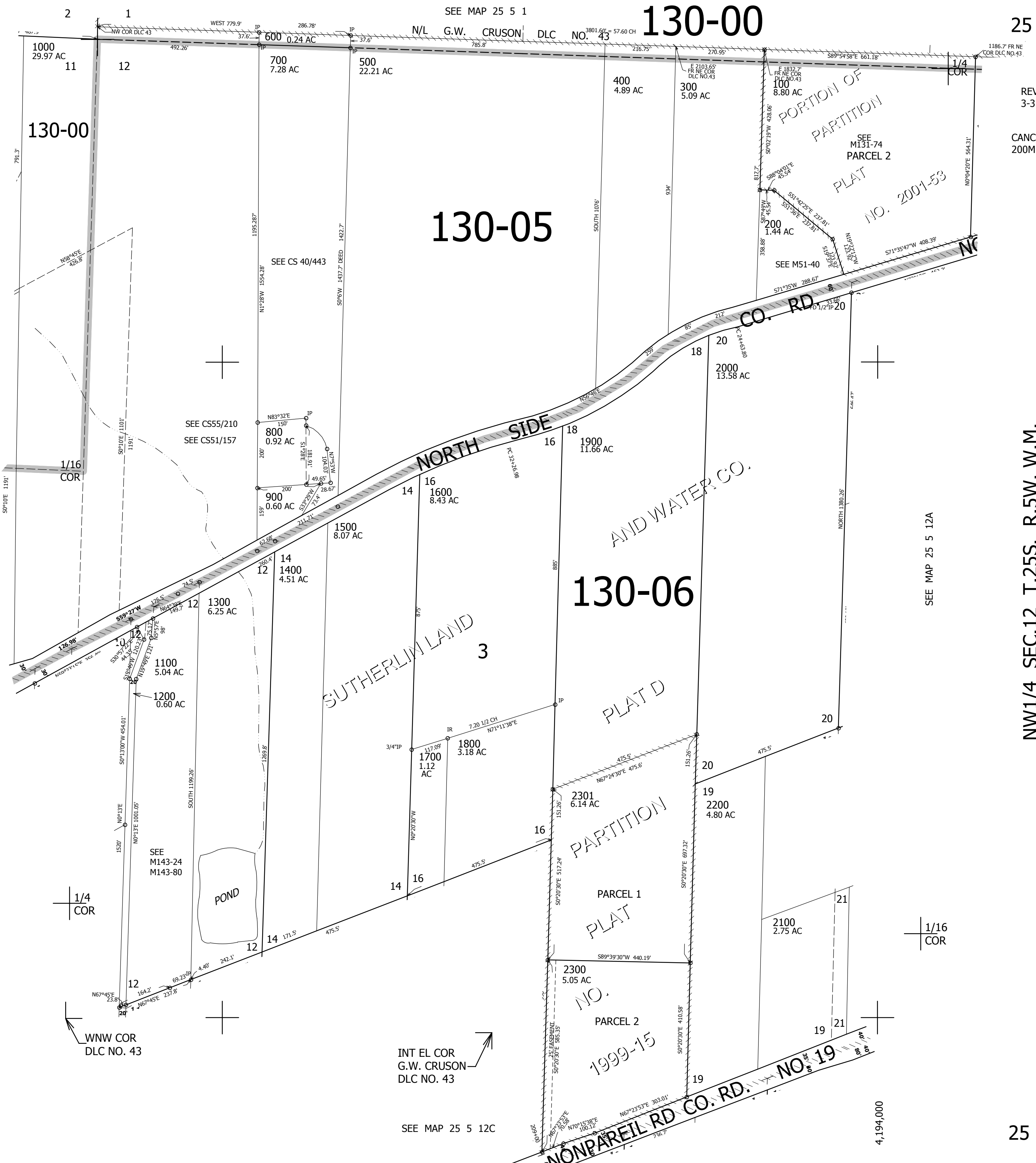
130-06

NW1/4 SEC.12 T.25S. R.5W. W.M.
DOUGLAS COUNTY
1" = 200'

SEE MAP 25 5 12A

647,000

25 5 12B



SEE MAP 25 5 12C

4,194,000