

THIS MAP WAS PREPARED FOR ASSESSMENT PURPOSE ONLY.

NE1/4 SEC.12 T.25S. R.5W. W.M.  
DOUGLAS COUNTY  
1" = 200'

REVISED ON  
11-24-21

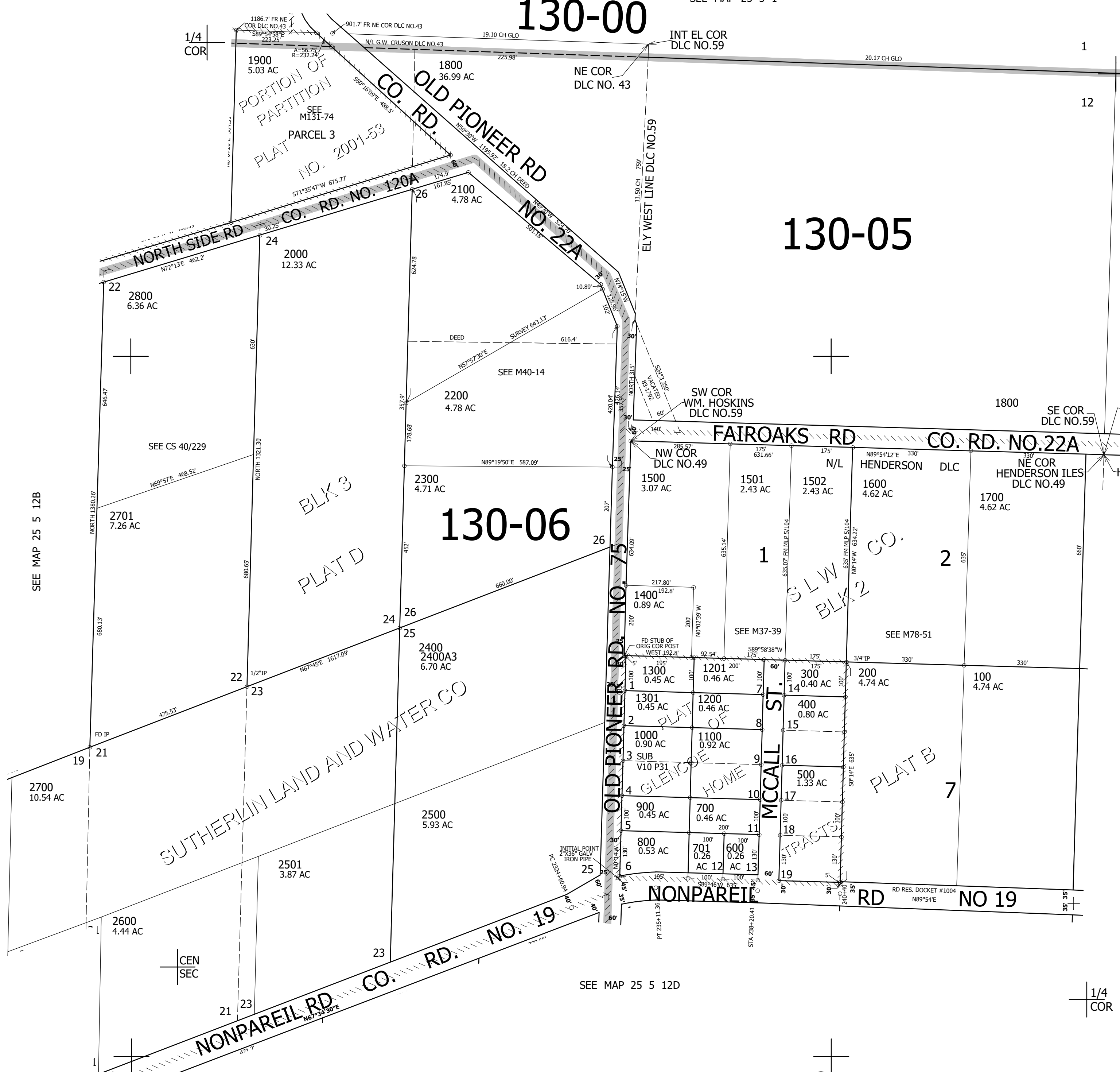
25 5 12A

SEE MAP 25 5 1

130-00

130-05

130-06



CANCELLED NOS  
1800M1 900M1 600M1  
1000M1 300M1 1100M1  
400M1 1100M2 500M1  
1200M1 1300M1 700M1  
800M1 2400A1 2101  
2400A2 2201

SEE MAP 25 5 12B

SEE MAP 25 4 7

SEE MAP 25 5 12D

1/4  
COR

647,000

25 5 12A

4,196,000