

SE1/4 SEC.11 T.25S. R.5W. W.M.
DOUGLAS COUNTY

REVISED ON
5-27-05

25 5 11D

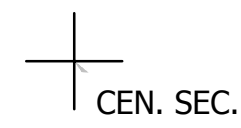
1" = 200'

THIS MAP WAS PREPARED FOR
ASSESSMENT PURPOSE ONLY.

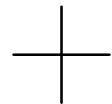
CANCELLED NOS
1000 2000M1 900
102 1102 1201

647,000

25 5 11D



CEN. SEC.



SEE MAP 25 5 11C

NE COR
W.H. CROUCH
DLC NO 45

1/4 COR.

4,189,000

SEE MAP 25 5 11

CO.

S.L.&W.CO.

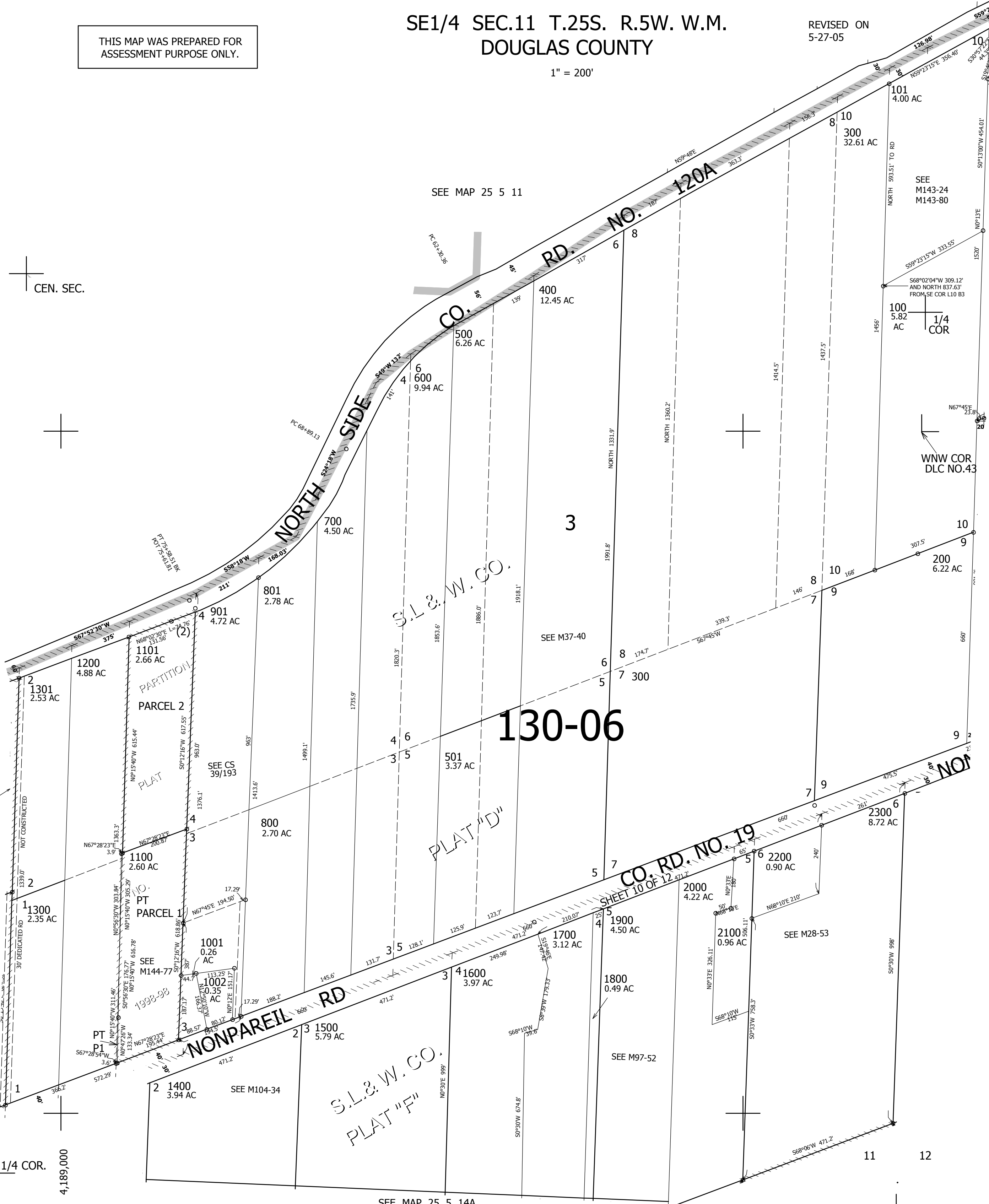
PLAT "D"

S.L.&W.CO.
PLAT "F"

130-06

CO. RD. NO. 19

SHEET 10 OF 12



SEE MAP 25 5 12B

SEE MAP 25 5 12C

SEE MAP 25 5 14A