

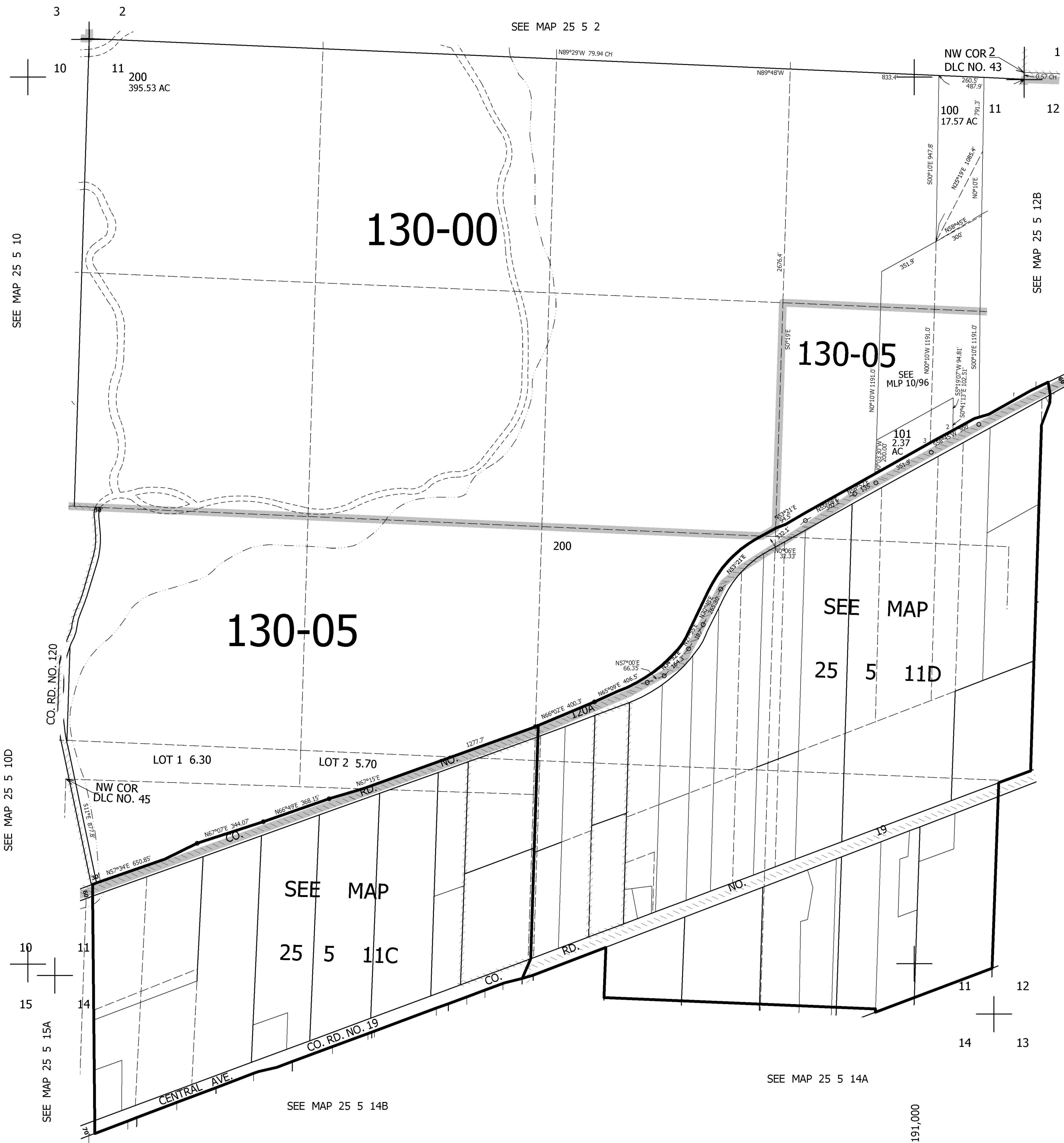
THIS MAP WAS PREPARED FOR ASSESSMENT PURPOSE ONLY.

SEC.11 T.25S. R.5W. W.M.
DOUGLAS COUNTY

1" = 400'

REVISED ON

25 5 11
& INDEX



CANCELLED NOS
200M1 200M2 200M3

PARCEL 101
1. S1°55'22"W 21.54'
2. S56°00'W 76.00'
3. S59°13'30"W 419.00'

SEE MAP 25 5 12C

645,000

25 5 11
& INDEX

4,191,000