

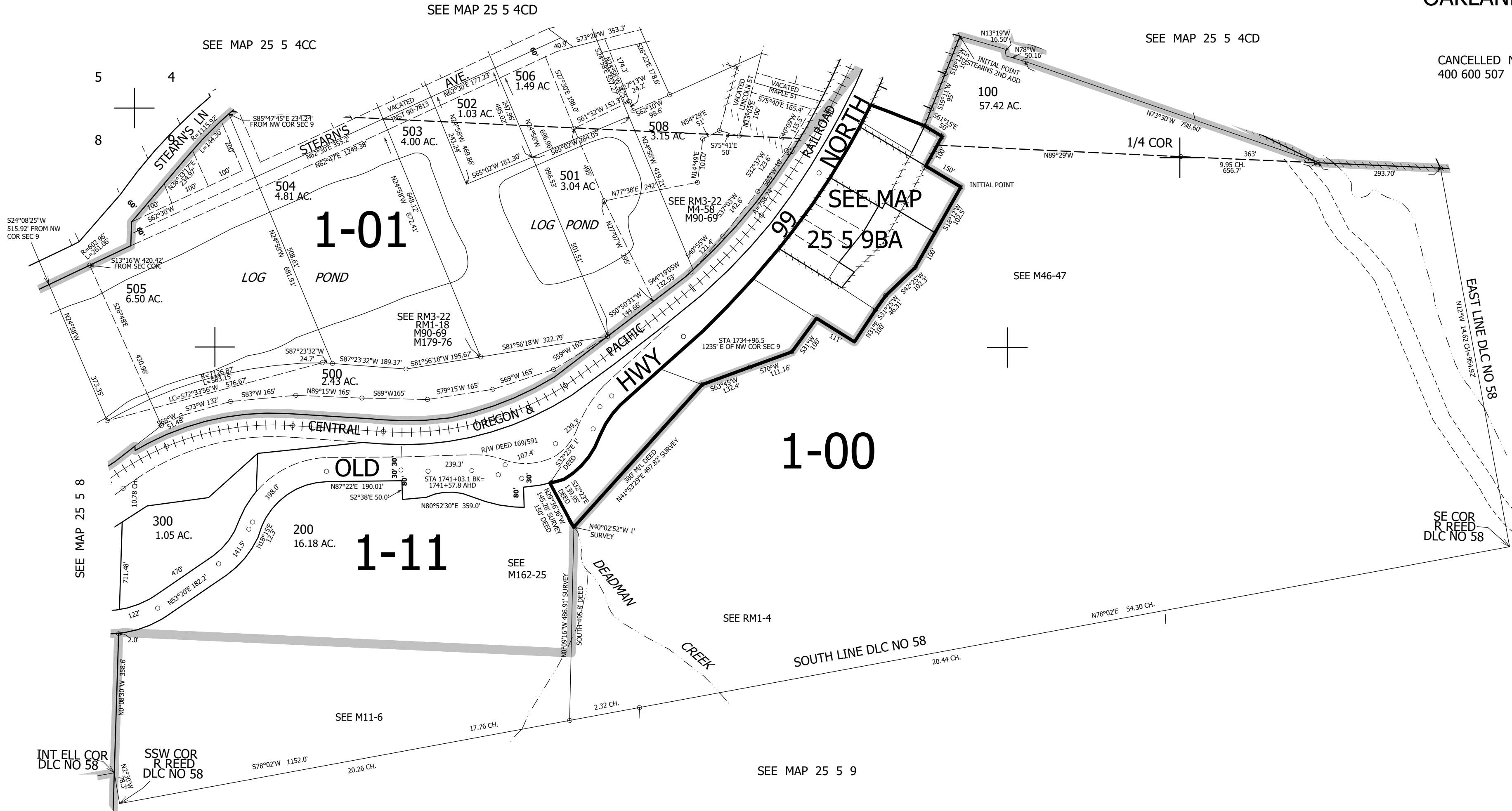
THIS MAP WAS PREPARED FOR ASSESSMENT PURPOSE ONLY.

NW1/4 SEC.9 T.25S. R.5W. W.M. DOUGLAS COUNTY  
1" = 200'

REVISED ON 6-25-20

25 5 9B & INDEX OAKLAND

CANCELLED NOS 400 600 507



1/4 COR

CEN SEC

648,000

25 5 9B & INDEX OAKLAND