

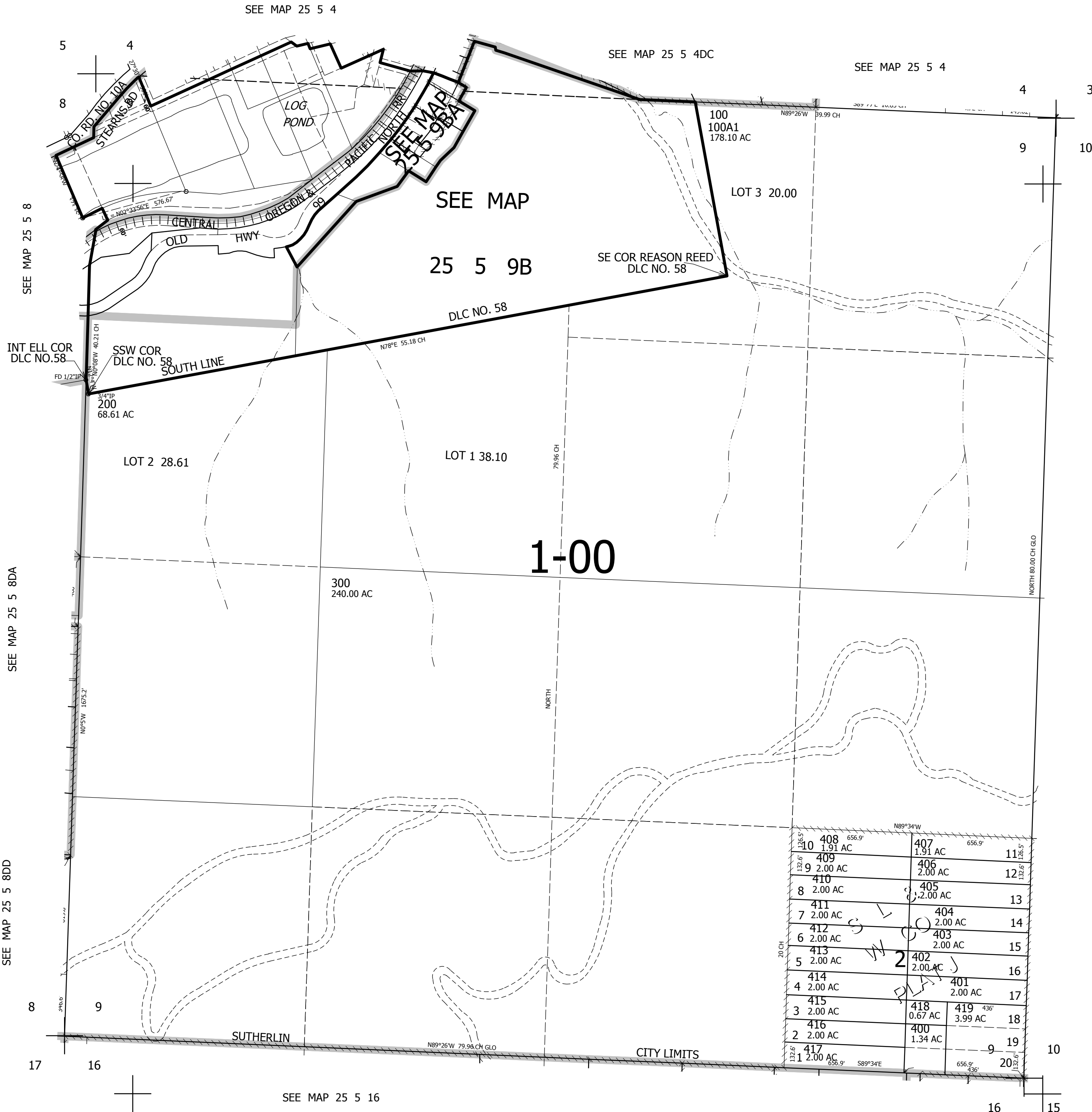
THIS MAP WAS PREPARED FOR ASSESSMENT PURPOSE ONLY.

SEC.9 T.25S. R.5W. W.M.
DOUGLAS COUNTY

1" = 400'

REVISED ON
6-25-20

25 5 9
& INDEX



CANCELLED NOS
420 401M1 402M1
403M1 404M1 405M1
406M1 407M1 408M1
409M1 410M1 411M1
412M1 413M1 414M1
415M1 416M1 417M1

10	408 1.91 AC	407 1.91 AC	11
9	409 2.00 AC	406 2.00 AC	12
8	410 2.00 AC	405 2.00 AC	13
7	411 2.00 AC	404 2.00 AC	14
6	412 2.00 AC	403 2.00 AC	15
5	413 2.00 AC	402 2.00 AC	16
4	414 2.00 AC	401 2.00 AC	17
3	415 2.00 AC	418 0.67 AC	18
2	416 2.00 AC	419 3.99 AC	19
1	417 2.00 AC	400 1.34 AC	20

645,500

25 5 9
& INDEX

4,181,000