

THIS MAP WAS PREPARED FOR ASSESSMENT PURPOSE ONLY.

SW1/4 SE1/4 SEC.8 T.25S. R.5W. W.M.  
DOUGLAS COUNTY  
1" = 100'

REVISED ON  
12-16-13

25 5 8DC

SEE MAP 25 5 8DB

1/16  
COR

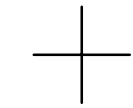
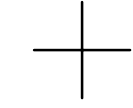
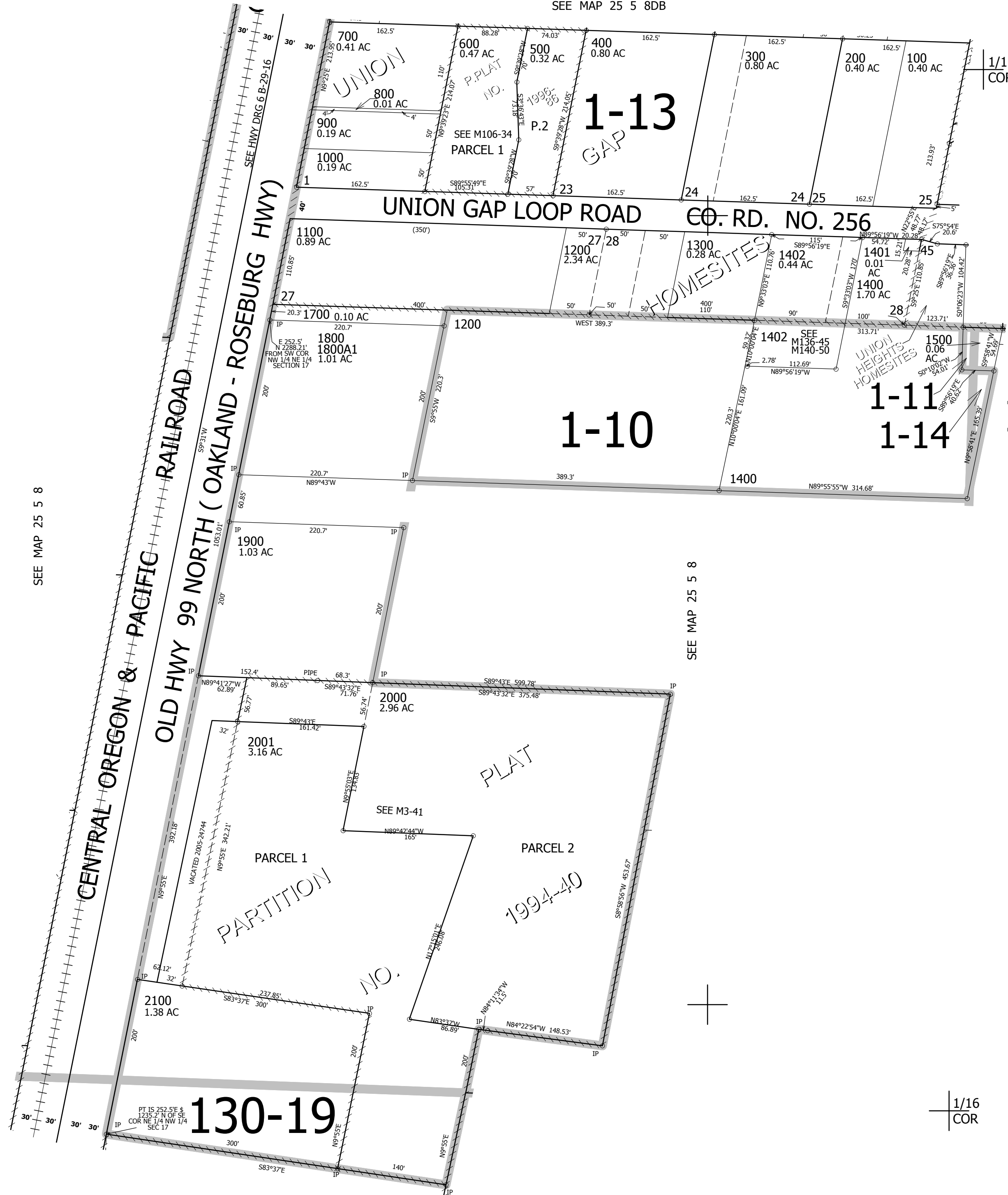
1/16  
COR

CANCELLED NOS  
501 601 2000M1  
2001M1 2002M1 1600  
1601 1403

SEE MAP 25 5 8DD

SEE MAP 25 5 8

SEE MAP 25 5 8



1/4  
COR

1/16  
COR

SEE MAP 25 5 17A

4,174,000

645,500

25 5 8DC