

THIS MAP WAS PREPARED FOR ASSESSMENT PURPOSE ONLY.

1/16
COR

SE1/4 SE1/4 SEC.5 T.25S. R.5W. W.M.
DOUGLAS COUNTY
1" = 100'

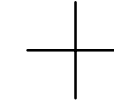
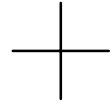
REVISED ON
8-13-99

1/16
COR

25 5 5DD

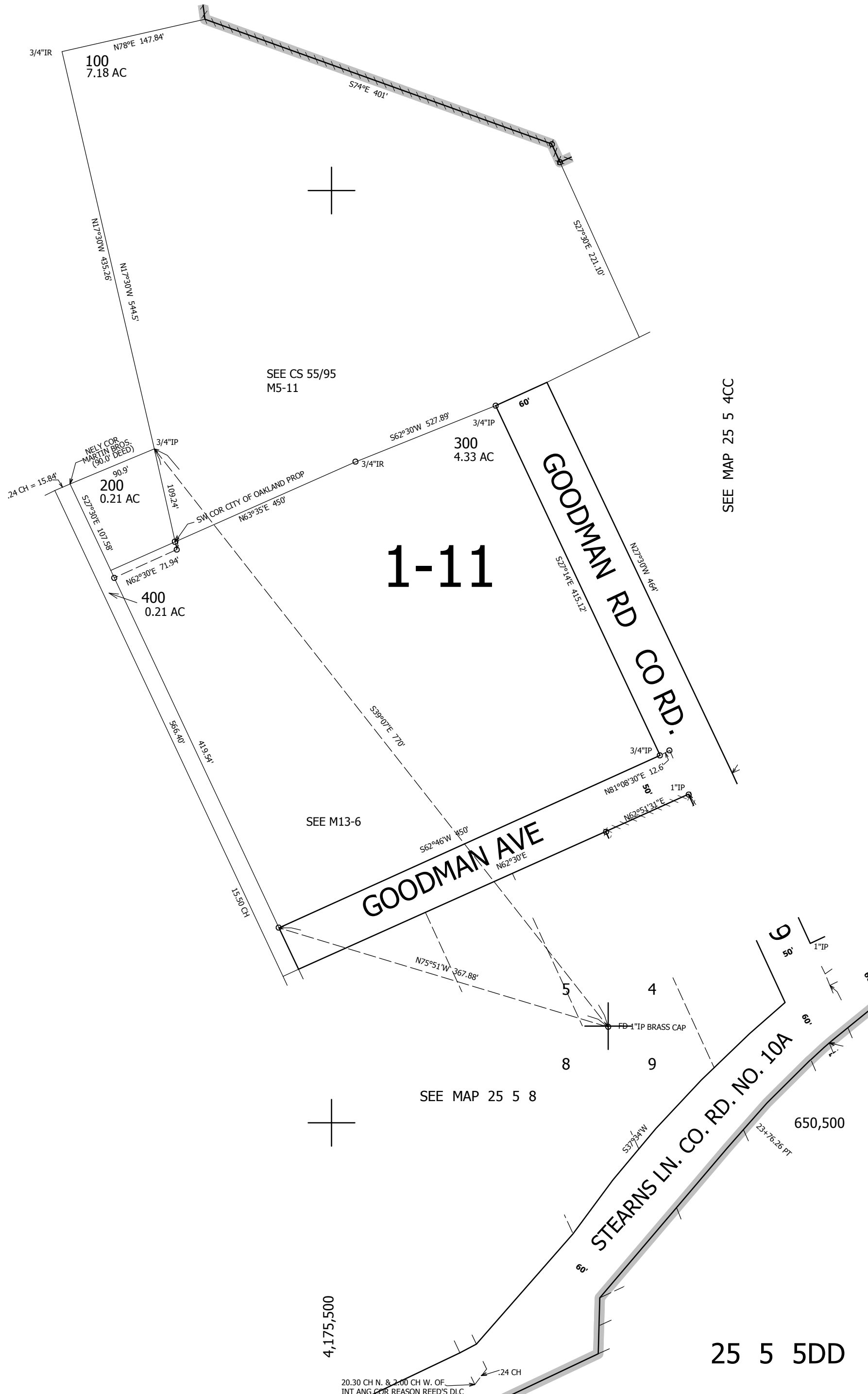
SEE MAP 25 5 5

CANCELLED NOS



SEE MAP 25 5 5

SEE MAP 25 5 4CC



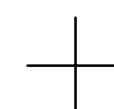
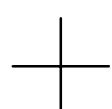
1-11

GOODMAN RD CO RD.

GOODMAN AVE

STEARNS LN. CO. RD. NO. 10A

1/16
COR



SEE MAP 25 5 8

25 5 5DD

4,175,500

650,500

20.30 CH N. & 2.00 CH W. OF
INT ANG COR REASON REED'S DLC