

THIS MAP WAS PREPARED FOR ASSESSMENT PURPOSE ONLY.

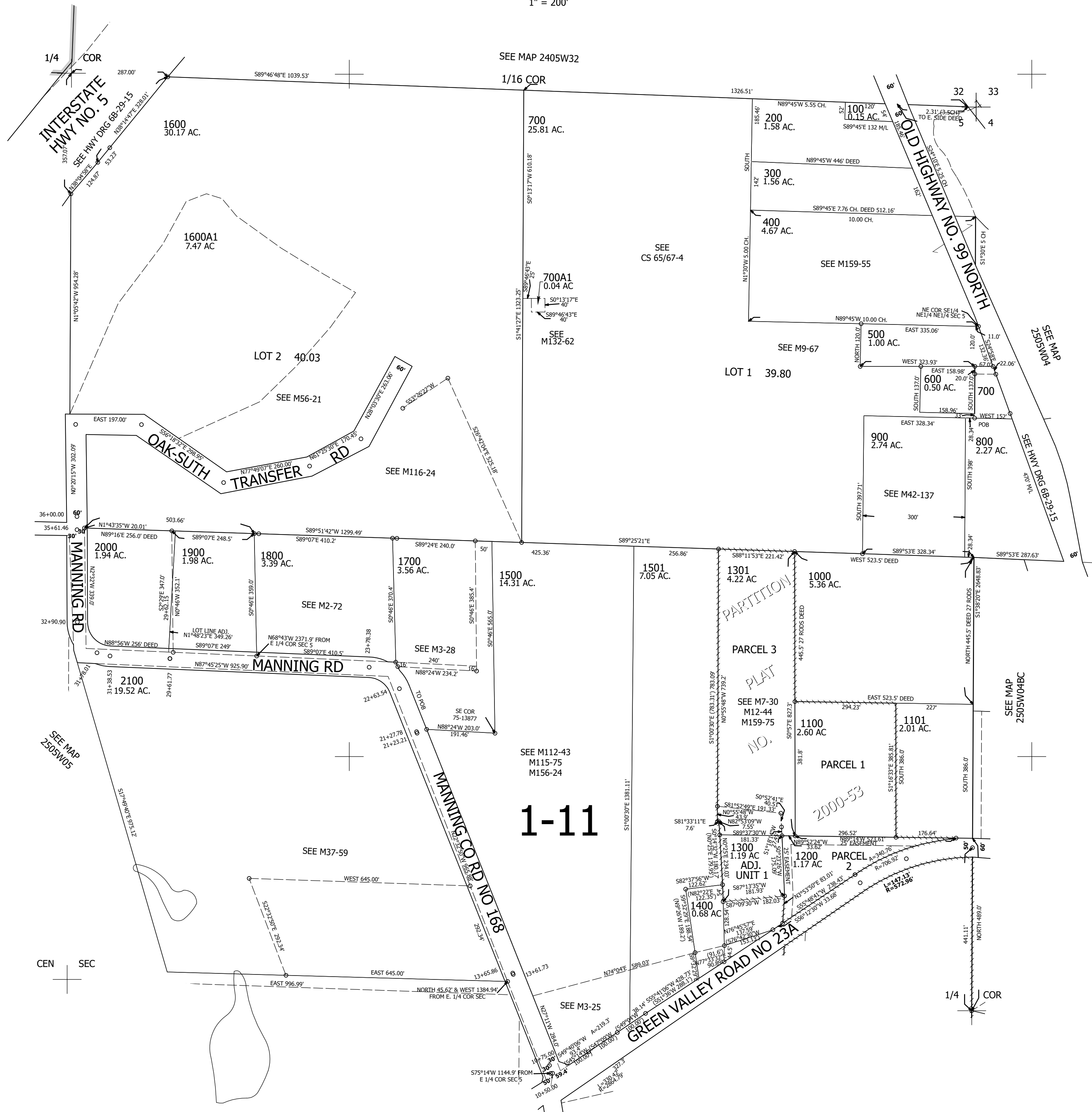
Upper Left:
123°19'9"W 43°25'59"N
4172626E 656379N ft

NE1/4 SEC.05 T.25S. R.05W. W.M.
DOUGLAS COUNTY
1" = 200'

Date Exported 2026-01-05

250505A
& INDEX

CANCELLED NOS:
2200 1502 1302 1303



CEN SEC

250505A
& INDEX

Lower Right:
123°18'14"W 43°25'25"N
4176553E 652779N ft