

THIS MAP WAS PREPARED FOR ASSESSMENT PURPOSE ONLY.

Upper Left:
123°19'54"W 43°25'59"N
4169307E 656458N ft

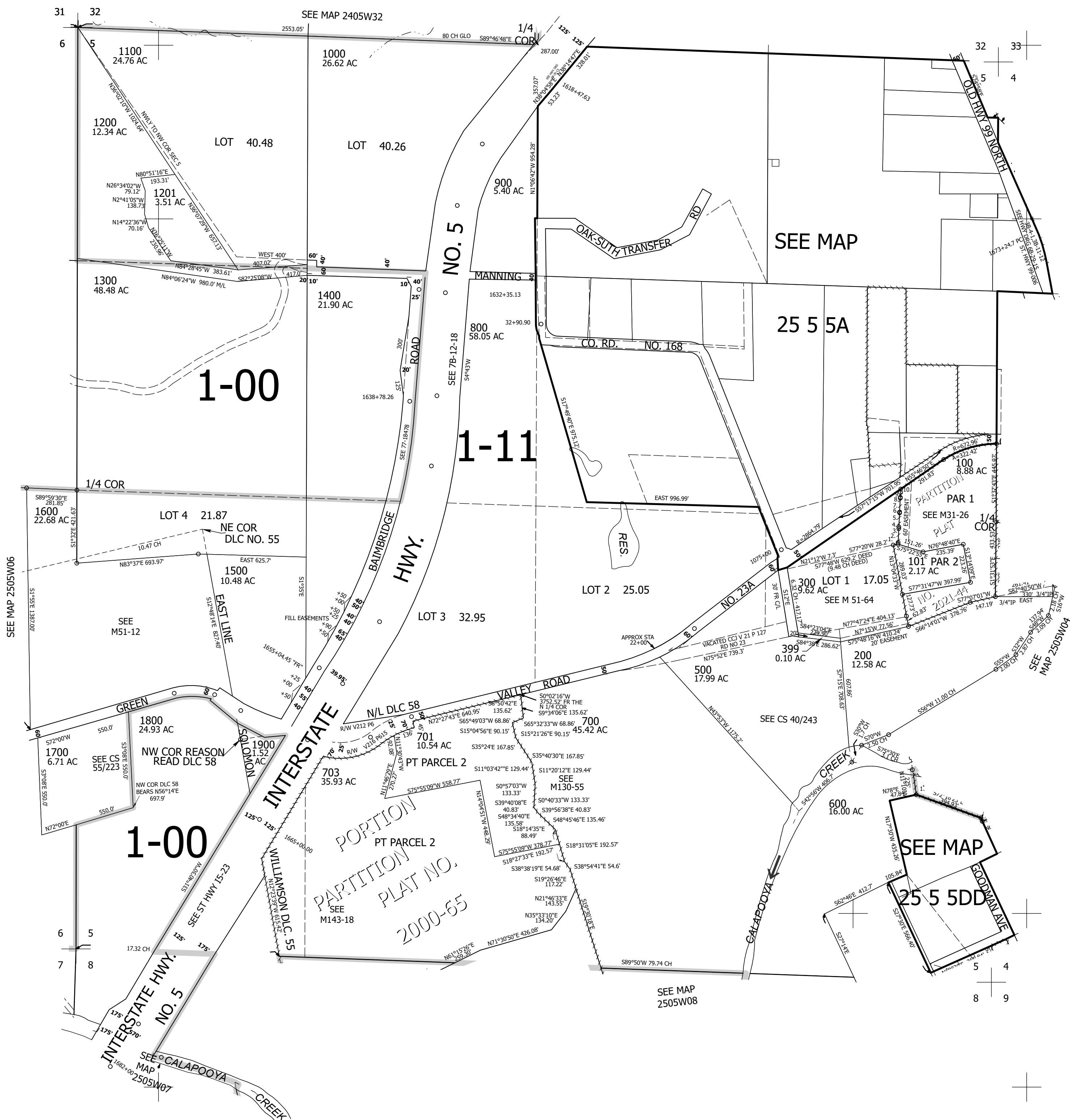
SEC.05 T.25S. R.05W. W.M.
DOUGLAS COUNTY
1" = 400'

Date Exported 2025-11-12

250505
& INDEX
Oakland

CANCELLED NOS:
400 201 202 1301 702

- PARCEL 100
1. N77°13'15"E 28.01'
 2. N1°37'08"E 9.85'
 3. N0°19'19"E 80.26'
 4. N0°20'48"E 9.90'
 5. N0°22'40"E 79.99'
 6. N0°01'52"E 4.96'
 7. N0°18'04"E 79.93'
 8. N1°44'56"E 5.16'
 9. N0°28'18"E 27.74'
 10. N0°22'39"E 34.53'



250505
& INDEX
Oakland

Lower Right:
123°18'4"W 43°24'53"N
4177156E 649502N ft