

THIS MAP WAS PREPARED FOR ASSESSMENT PURPOSE ONLY.

Upper Left:  
123°18'27"W 43°25'17"N  
4175577E 651965N ft

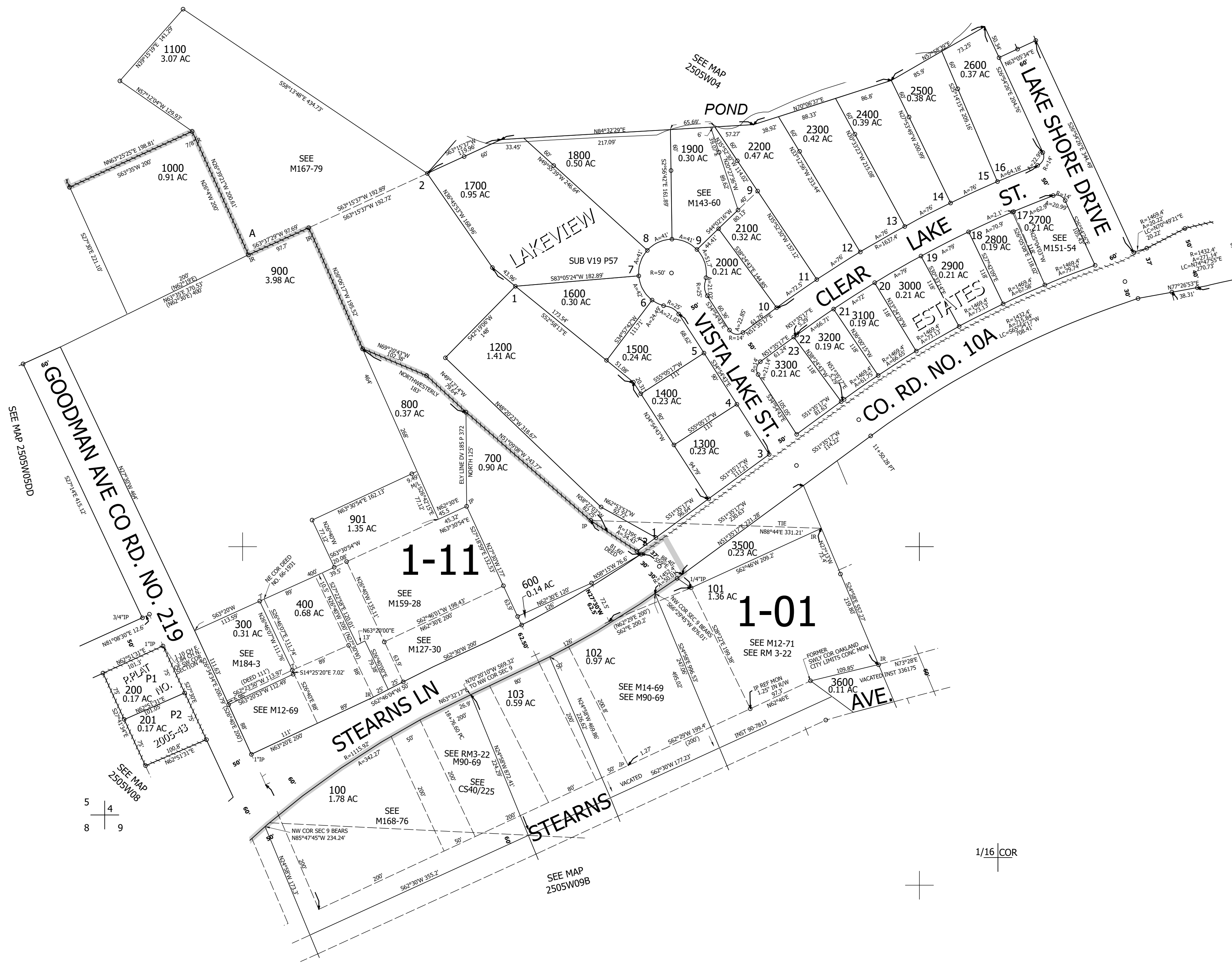
SW1/4 SW1/4 SEC.04 T.25S. R.05W. W.M.  
DOUGLAS COUNTY  
1" = 100'

Date Exported 2024-08-06

250504CC  
Oakland

CANCELLED NOS:  
401 1901 2801  
301 402

1/16 COR



5 4  
8 9

1/16 COR

250504CC  
Oakland

Lower Right:  
123°17'59"W 43°25'N  
4177552E 650226N ft