

THIS MAP WAS PREPARED FOR ASSESSMENT PURPOSE ONLY.

SW1/4 NW1/4 SEC.4 T.25S. R.5W. W.M.  
DOUGLAS COUNTY

1" = 100'

REVISED ON  
1-13-22

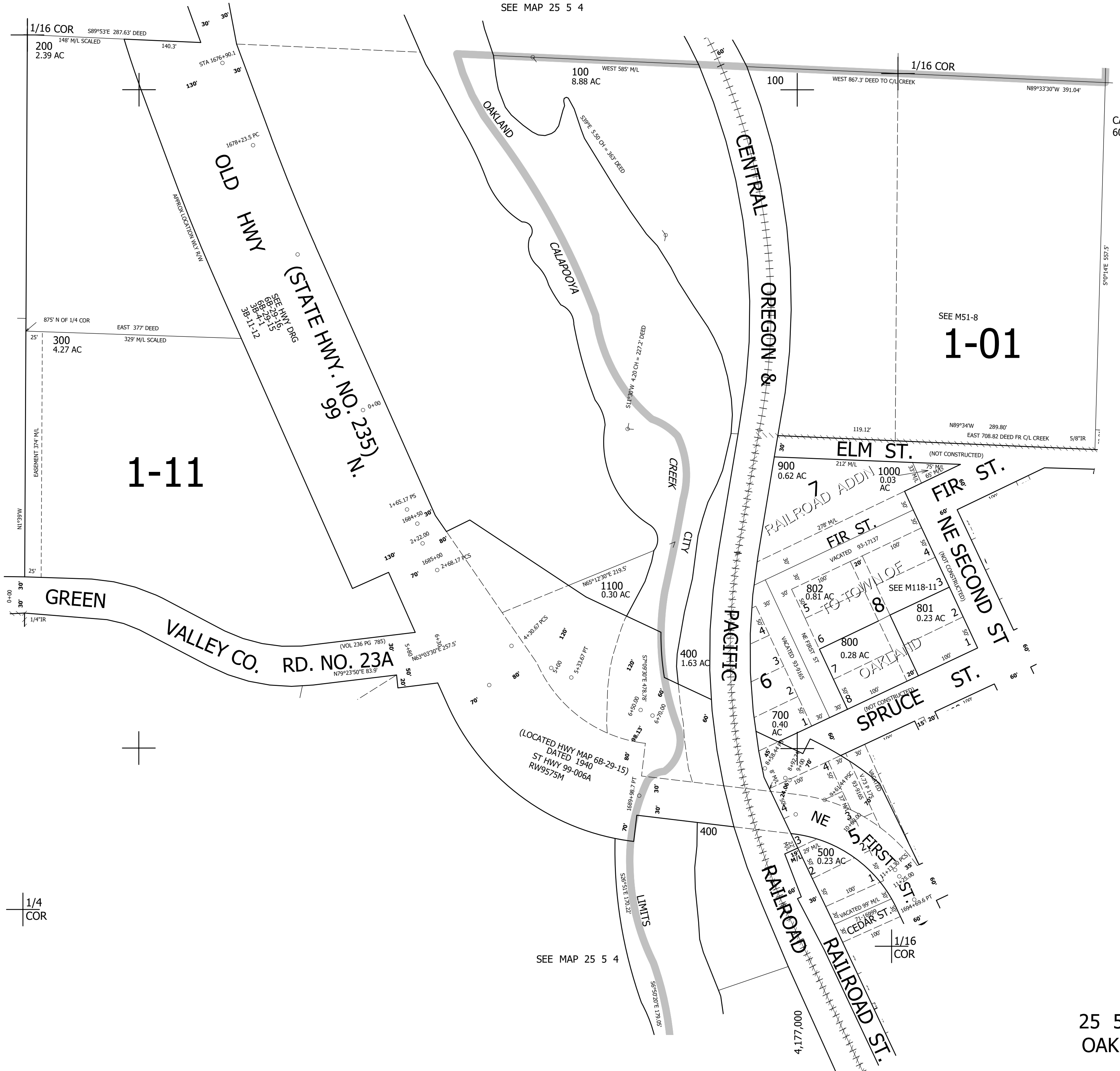
25 5 4BC  
OAKLAND

SEE MAP 25 5 4

CANCELLED NOS  
601 602 600

SEE MAP 25 5 4BD

653,500



SEE MAP 25 5 5A

SEE M51-8  
**1-01**

**1-11**

**(STATE HWY. NO. 235) N.**

**GREEN VALLEY CO. RD. NO. 23A**

**CENTRAL OREGON & PACIFIC RAILROAD**

**ELM ST.** (NOT CONSTRUCTED)

**FIR ST.**

**SPRUCE ST.** (NOT CONSTRUCTED)

**NE SECOND ST.** (NOT CONSTRUCTED)

**NE FIRST ST.**

**RAILROAD ST.**

**RAILROAD ST.**

**RAILROAD ST.**

(LOCATED HWY MAP DATED 1940  
ST HWY 99-006A  
RW9575M)

SEE MAP 25 5 4

25 5 4BC  
OAKLAND