

THIS MAP WAS PREPARED FOR ASSESSMENT PURPOSE ONLY.

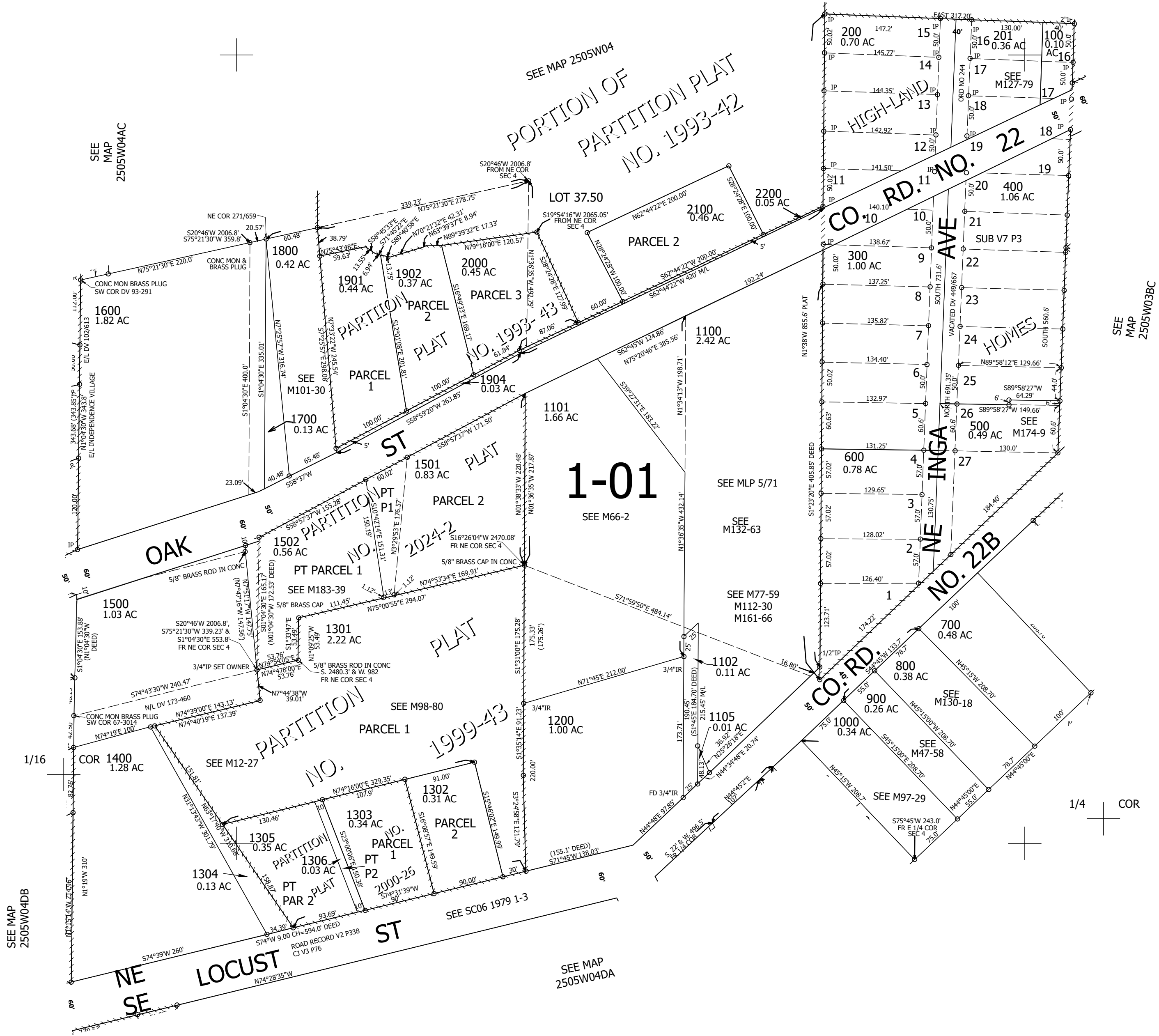
Upper Left:
123°17'35"W 43°25'41"N
4179455E 654304N ft

SE1/4 NE1/4 SEC.04 T.25S. R.05W. W.M.
DOUGLAS COUNTY
1" = 100'

Date Exported 2024-03-06

250504AD
Oakland

CANCELLED NOS:
1300 1900 1903 1100M1 1101M1
1102M1 1200M1 2000M1 2100M1
2200M1 1103 600A1 1104 401 1503
1504



SEE MAP
2505W04DB

SEE
MAP
2505W04AC

SEE
MAP
2505W03BC

SEE MAP
2505W04DA

250504AD
Oakland

Lower Right:
123°17'8"W 43°25'24"N
4181417E 652525N ft