

THIS MAP WAS PREPARED FOR ASSESSMENT PURPOSE ONLY.

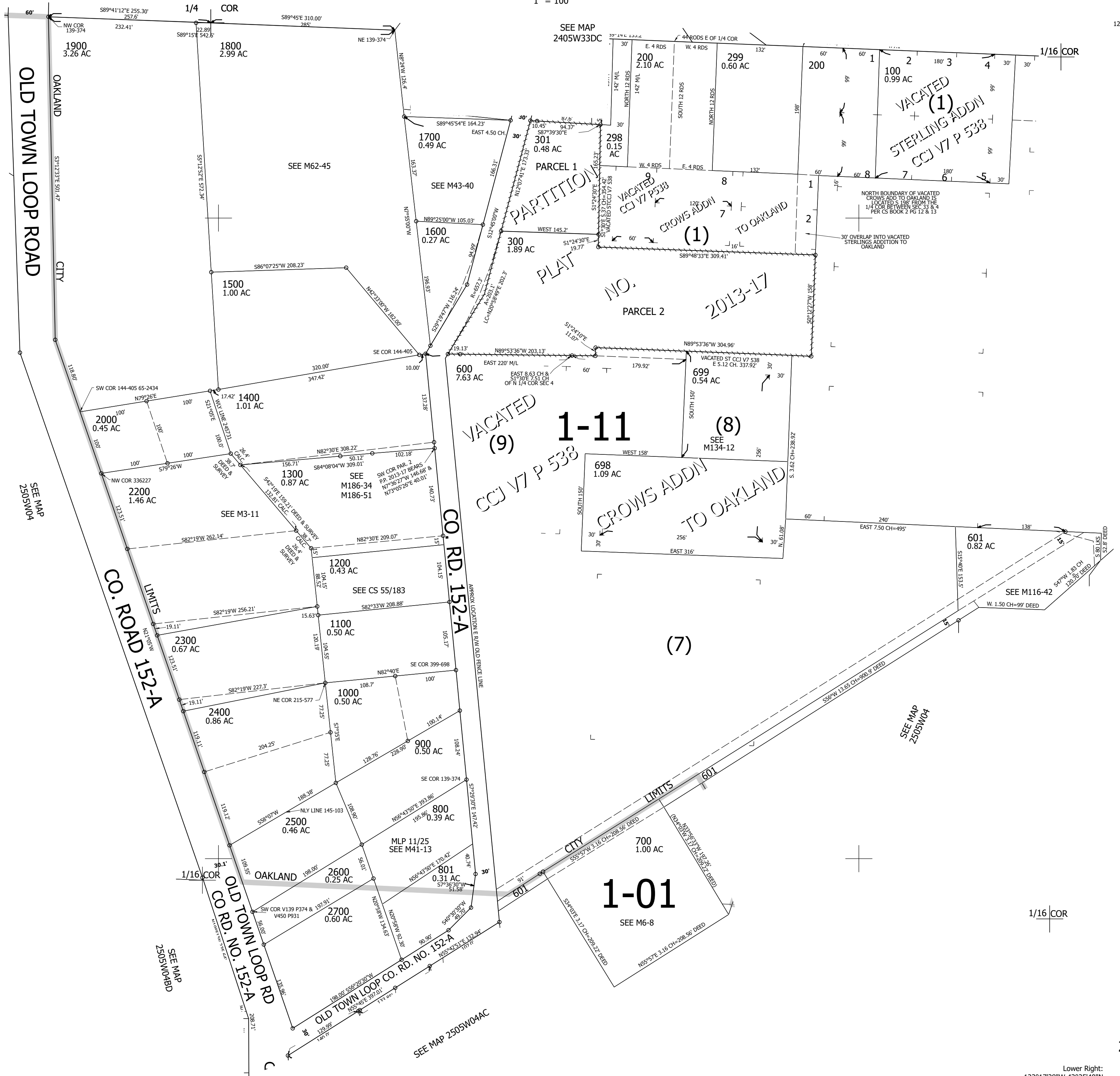
Upper Left:  
123°17'55"W 43°25'56"N  
4178046E 655872N ft

NW1/4 NE1/4 SEC.04 T.25S. R.05W. W.M.  
DOUGLAS COUNTY  
1" = 100'

Date Exported 2026-03-16

250504AB

CANCELLED NOS:  
1299 400 500 2100 1301  
700A1



SEE MAP  
2505W04BD

SEE MAP 2505W04AC

SEE MAP  
2505W04

250504AB  
Oakland

Lower Right:  
123°17'28"W 43°25'40"N  
4180018E 654134N ft