

THIS MAP WAS PREPARED FOR ASSESSMENT PURPOSE ONLY.

Upper Left:
123°18'47"W 43°26'4"N
4174201E 656780N ft

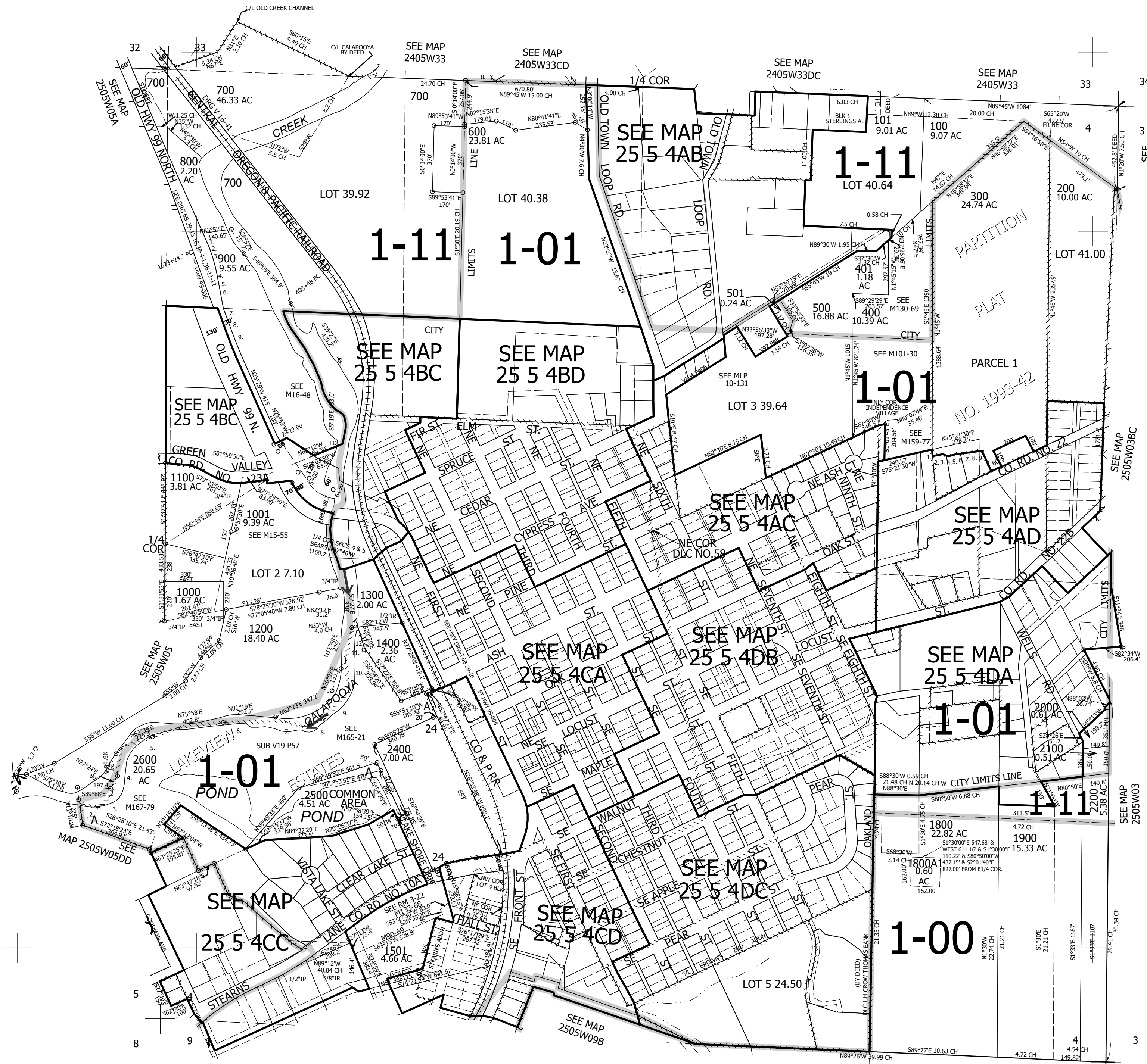
SEC.04 T.25S. R.05W. W.M.
DOUGLAS COUNTY
1" = 400'

Date Exported 2023-11-16

250504
& INDEX
Oakland

CANCELLED NOS:
1700 301 301M1 1600 302 302M1
200M1 303 303M1 400M1 500M1
501M1 300M1 2300M1 2300 1500
402 2601 2602 601 701

- PARCEL 300
 1. S7°25'57"E 38.79'
 2. N75°43'48"E 59.63'
 3. S58°45'33"E 13.55'
 4. S11°45'22"E 6.94'
 5. S80°40'58"E 13.75'
 6. N70°21'32"E 42.31'
 7. N63°39'37"E 8.94'
 8. N89°39'32"E 17.33'
 9. N79°18'E 120.57'
- PARCEL 900
 1. N26°26'W 69.92'
 2. N22°31'W 100'
 3. N16°58'W 58'
 4. N13°23'W 88'
 5. N16°14'W 100'
 6. N21°27'W 100'
 7. N23°13'W 100'
 8. N24°08'W 100'
 9. N25°04'W 100'
- PARCEL 2600
 1. N10°08'55"W 1221.82'
 2. S80°E 109.92'
 3. S41°24'06"W 106.6'
 4. N9°38'57"E 268.91'
 5. N69°19'15"E 343.34'
 6. N84°26'42"E 575.66'
 7. N76°15'57"W 120.96'
 8. S67°23'30"W 122.56'
 9. S38°41'13"W 208.19'
 10. S8°47'36"E 177.38'
 11. N13°17'03"E 235.58'
 12. N20°11'07"W 168.1'



SEE MAP 2505W09

9 10

Lower Right:
123°16'58"W 43°24'58"N
4182050E 649824N ft

250504
& INDEX
Oakland