

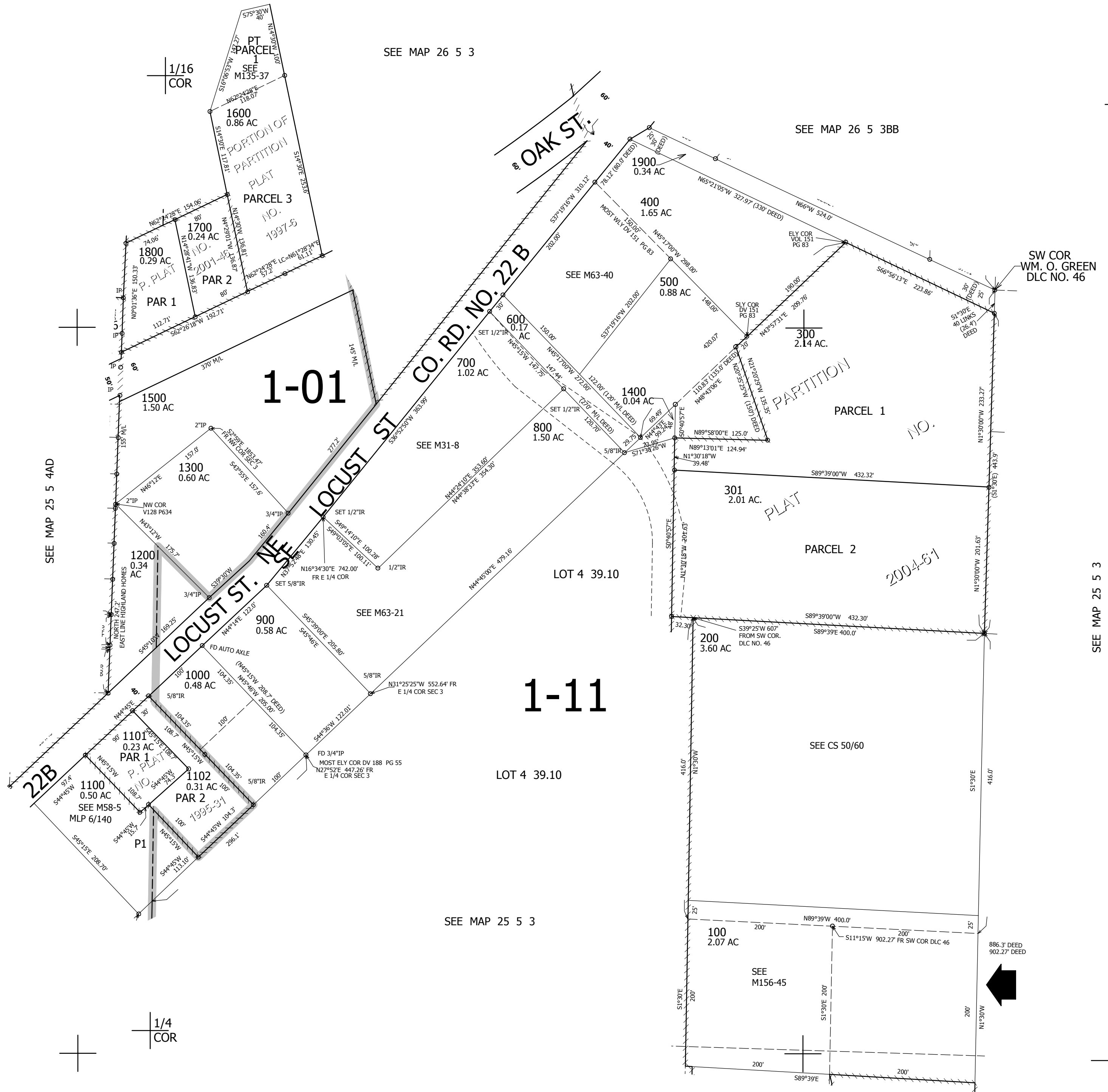
THIS MAP WAS PREPARED FOR ASSESSMENT PURPOSE ONLY.

SW1/4 NW1/4 SEC.3 T.25S. R.5W. W.M. DOUGLAS COUNTY
1" = 100'

REVISED ON 3-4-08

25 5 3BC OAKLAND

CANCELLED NOS



4,182,000

1/16 COR 653,000

25 5 3BC OAKLAND