

THIS MAP WAS PREPARED FOR ASSESSMENT PURPOSE ONLY.

Upper Left:  
123°17'3"W 43°25'56"N  
4181916E 655764N ft

NE1/4 NW1/4 SEC.03 T.25S. R.05W. W.M.  
DOUGLAS COUNTY  
1" = 100'

Date Exported 2025-09-24

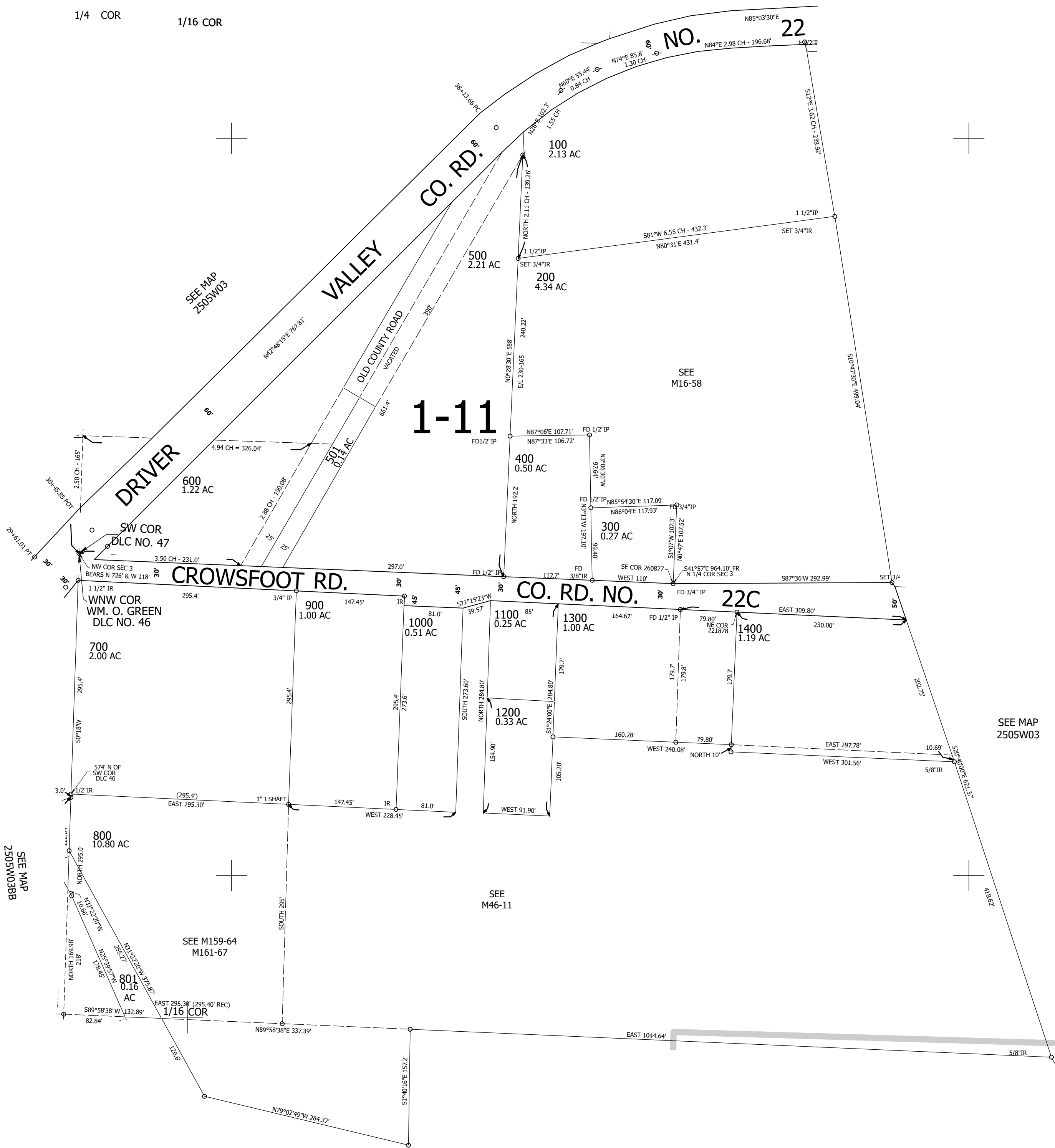
250503BA  
Oakland

CANCELLED NOS:  
601 602 803

1/4 COR  
1/16 COR

SEE MAP 2405W34

1/4 | 1



SEE MAP  
2505W03

SEE  
M46-11

SEE M159-64  
M161-67

SEE MAP  
2505W03BB

1/16 COR

250503BA  
Oakland

Lower Right:  
123°16'35"W 43°25'40"N  
4183893E 654044N ft