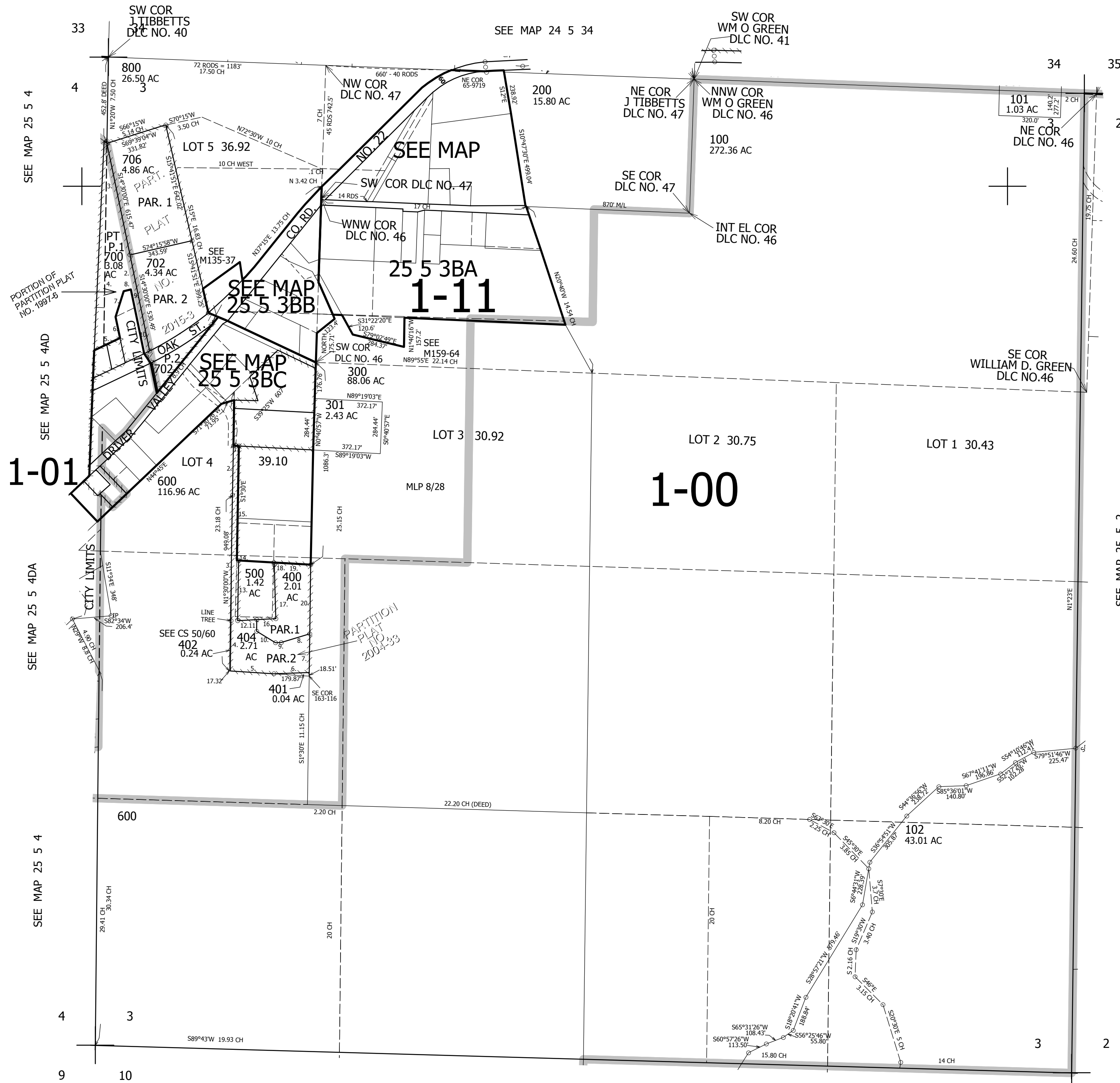


THIS MAP WAS PREPARED FOR ASSESSMENT PURPOSE ONLY.

SEC.3 T.25S. R.5W. W.M.  
DOUGLAS COUNTY  
1" = 400'

REVISED ON  
2-24-15

25 5 3  
& INDEX  
OAKLAND



CANCELLED NOS  
801 100M1 100M2  
100M3 705 701  
703 704 403  
501 302 303

655,000

PARCEL 700

1. LC=N60°08'59"E 25.93'
2. N14°30'W 1392.6'
3. N54°15'W 13.3'
4. SOUTH 1124.75'
5. N62°24'28"E 154.12'
6. N14°30'W 117.81'
7. N16°06'53"E 147.27'
8. N75°30'E 40'
9. S14°30'E 100'
10. S14°30'E 253.6'

PARTITION PLAT  
NO. 2004-33

1. S89°39'00"E 32.30'
2. N1°30'00"W 266.92'
3. N2°56'22"W 678.12'
4. N1°33'32"W 271.74'
5. N89°39'00"W 235.11'
6. S84°27'28"W 180.23'
7. S1°30'00"E 206.70'
8. N69°48'22"E 160.75'
9. N84°29'47"E 31.68'
10. S61°58'44"E 118.74'
11. S1°56'58"E 63.03'
12. N84°57'35"E 94.82'
13. S2°56'15"E 305.56'
14. S89°30'00"E 9.30'
15. S1°30'00"E 616.00'
16. N84°57'36"E 103.51'
17. N3°54'05"W 295.45'
18. S16°17'37"E 12.27'
19. S89°39'00"E 200.00'
20. S1°30'00"E 374.79'

25 5 3  
& INDEX  
OAKLAND

SEE MAP 25 5 4

SEE MAP 25 5 4AD

SEE MAP 25 5 4DA

SEE MAP 25 5 4

SEE MAP 24 5 34

SEE MAP 25 5 3BB

SEE MAP 25 5 3BC

PARTITION PLAT NO. 2004-33

SEE MAP 25 5 10

SEE MAP 25 5 2

4,186,000